



Glebe Road | Barnes  
London | SW13



---

***An exciting opportunity to adapt and remodel this substantial detached house on one of Barnes Villages' premier roads.***

*Detached Corner Plot | Nearly 4000 Sq Foot | Huge Potential | Village Location | Separately Accessed Garage With Potential*

***£2,995,500 | Freehold***

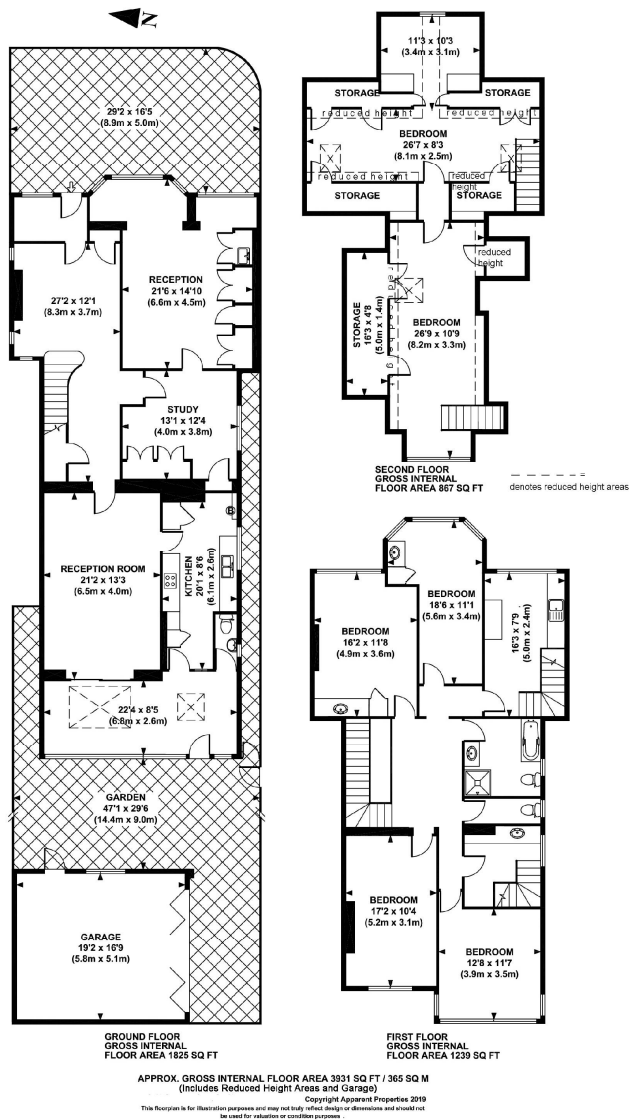
---











## Apparent Properties Ltd

15 Church Road, Barnes, London, SW13

020 8865 3300 | info@apparentproperties.com | www.apparentproperties.com

Important Notice - These particulars have been prepared in good faith and they are not intended to constitute part of an offer or contract. We have not performed a structural survey on this property and the services, appliances and specific fittings have not been tested. All photographs, measurements, floor plans and distances referred to are given as a guide and should not be relied upon.

