

PARKERS COURTYARD



Energy-Intelligent Homes



Luxury Homes

Stylish homes located in the heart of Haywards Heath.



Executive Apartments



Stunning high specification apartments.



Energy-Intelligent Living

Maximising self consumption and management of energy...

- Enphase 4kW Solar Panel Systems
- Enphase 5kW Battery
- Enphase EV Charger
- myenergi Eddi Hot Water Diverter
- Air Source Heat Pump
- Underfloor Heating
- Air Conditioning
- Smart Appliances
- Triple Glazing

Please note that some items listed are optional upgrades.



Enphase Energy Solar Systems

Why Enphase Energy?

The **Enphase** EV Charger uses excess solar power or cheaper off-peak electricity tariffs to charge your car. This all reduces reliance on the grid and helps lower electricity bills.

With **Enphase** each solar panel works independently helping to maximise energy production even if some panels are shaded or dirty.

The **Enphase** Battery stores excess solar energy generated during the day so it can be used in the evening or during peak electricity-rate periods.

Enphase is an Intelligent Energy System giving homeowners a smart fully integrated solution for generating, storing and using their Solar Energy in the most efficient way possible.

The **Enphase** Battery can also be charged from the grid at off peak rates to further increase savings.

Enphase also has market leading, advanced monitoring and energy management through the Enphase App where homeowners can track usage in real time and optimise self-consumption.



“Living in this energetic, beautiful town suits our lifestyle perfectly”



Parkers Courtyard is located in the heart of the bustling commuter town of Haywards Heath providing a lovely blend of rural and urban living.

Within the town are several high street shops including Marks & Spencer, Next & FatFace.

The Broadway provides nightlife entertainment and includes an array of restaurants, bars and public houses.

Ideal for commuters with fast links to London, Gatwick Airport & the South

Haywards Heath mainline railway station offers a fast and frequent service to central London.

Gatwick Airport is approximately 15 miles to the north and the cosmopolitan city of Brighton is less than 14 miles to the south.







'Energy Pack' Upgrades

Whilst each house within Parkers Courtyard comes with an array of energy saving features including the Enphase Solar PV system, an Air Source Heat Pump system, underfloor heating, smart appliances and triple glazed windows & doors we are also able to offer two 'Energy Pack' upgrades to maximise the solar efficiency.

So what's included in each pack?...



Energy Pack 1

Energy Pack 1 is only available as an upgrade to 1 Parkers Courtyard as this house already includes all of the features within Energy Pack 2.

Enphase IQ System Controller 3 INT (Backup Box)

The 'Backup Box' enables backup power during a power cut. This allows homeowners to keep key appliances and lighting running while continuing to recharge batteries from solar during daylight hours.



Energy Pack 2

Energy Pack 2 is available as an upgrade to
2, 3 & 4 Parkers Courtyard

Enphase IQ System Controller 3 INT (Backup Box)

The 'Backup Box' enables backup power during a power cut. This allows homeowners to keep key appliances and lighting running while continuing to recharge batteries from solar during daylight hours.

Enphase Battery 5kWh

The Enphase Battery stores excess solar energy generated during the day so it can be used in the evening or during peak electricity-rate periods. The Battery can also be charged from the grid at off peak rates to further increase savings.

myenergi Eddi Hot Water Diverter

'Eddi' is a smart solar power diverter that automatically takes any excess energy that the solar panels produce and redirects it to heat your hot water instead of exporting it back to the grid.

Enphase EV Charger

This is an intelligent EV Charger that enables you to charge your car with excess solar PV energy. This integrates everything into the Enphase monitoring platform. Not only does this give you a neater overview of the system but using all Enphase products also gives you one point of support and improved system integration.



'Green Mortgages' | Energy Efficient Homes

'Green Mortgages' reward you for buying an energy-efficient home with offer incentives like lower interest rates, cashback, or larger loan amounts if the property meets strict environmental criteria.



"Floor Plans designed for the family"

3 Parkers Courtyard
119 m² / 1284 sqft



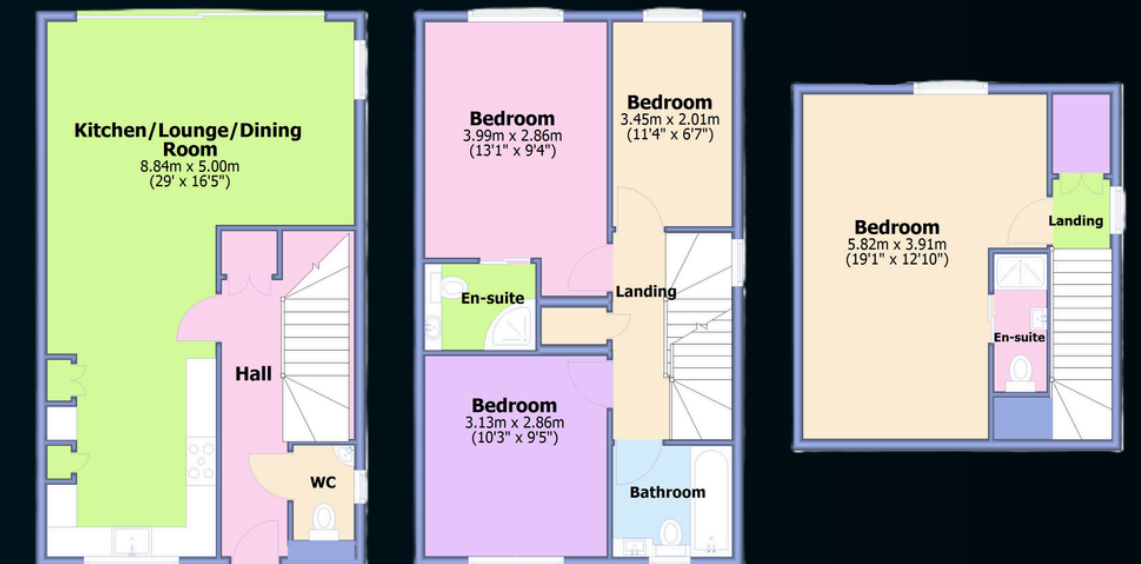
2 Parkers Courtyard
119 m² / 1284 sqft



1 Parkers Courtyard
123 m² / 1333 sqft

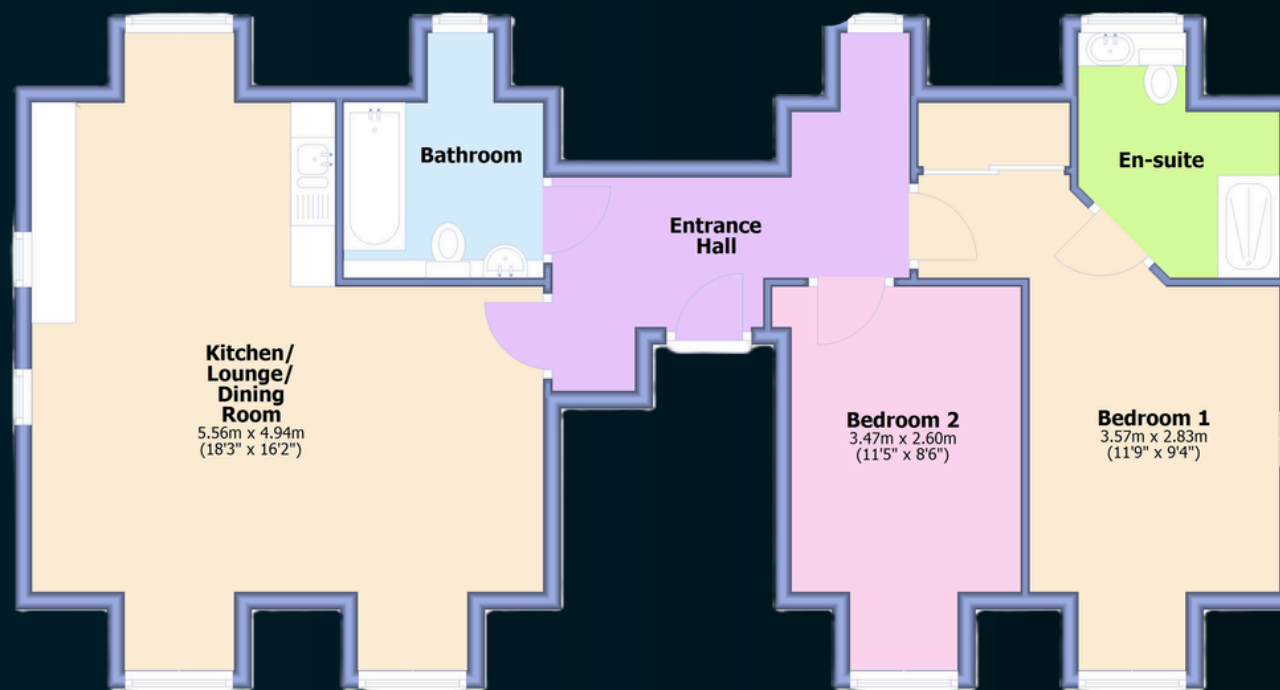


4 Parkers Courtyard
123 m² / 1333 sqft

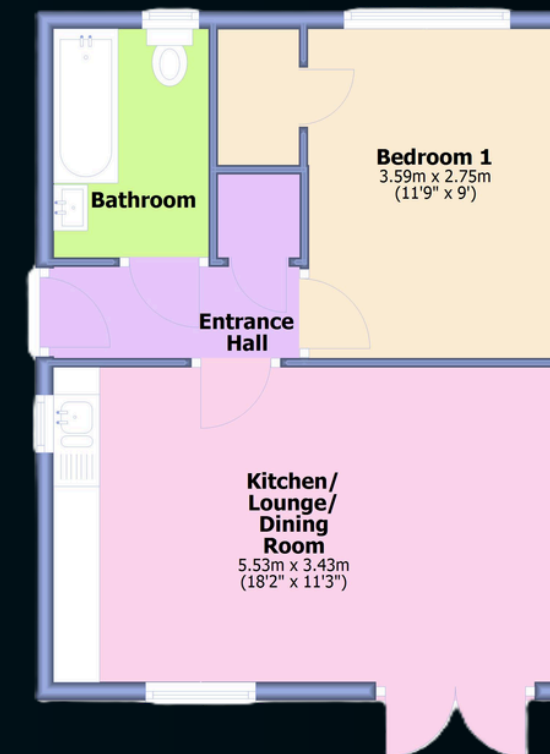


"Executive living"

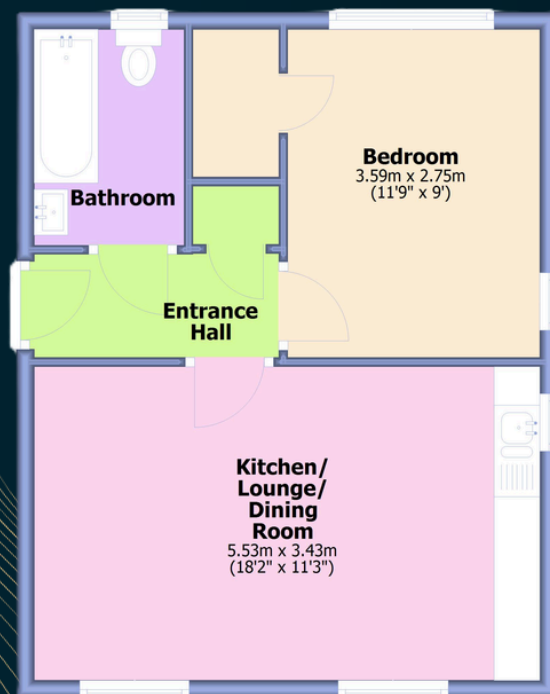
The Penthouse
Parkers Courtyard
76 m² / 821 sqft



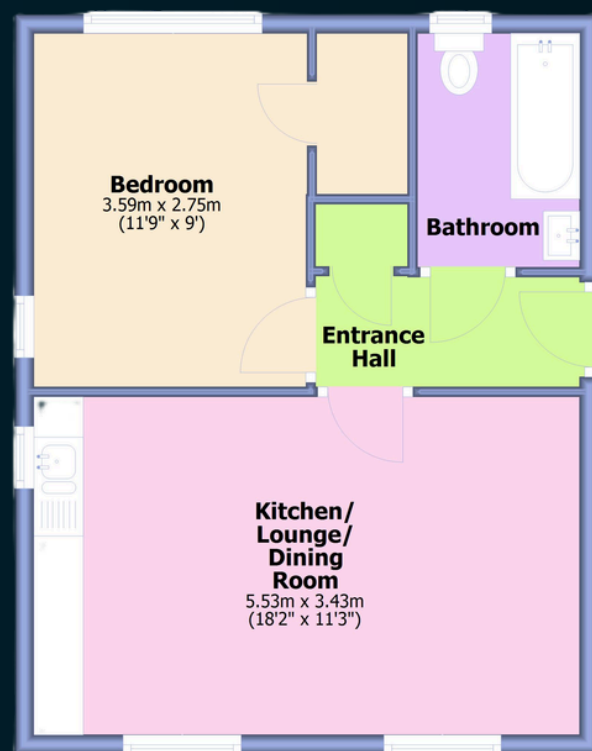
9 Parkers Courtyard
39 m² / 423 sqft



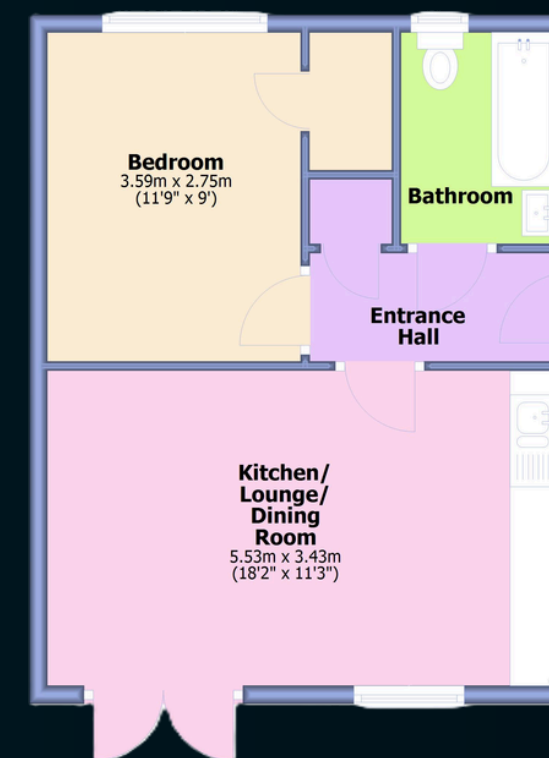
5 Parkers Courtyard
39 m² / 423 sqft



6 Parkers Courtyard
39 m² / 423 sqft



8 Parkers Courtyard
39 m² / 423 sqft



Pricing:

Houses:	Bedrooms	Price	Available Upgrades	Upgrade Price
1 Parkers Courtyard	4	£650,000	Energy Pack 1	£4,950
2 Parkers Courtyard	4	£595,000	Energy Pack 2	£15,000
3 Parkers Courtyard	4	£595,000	Energy Pack 2	£15,000
4 Parkers Courtyard	4	£625,000	Energy Pack 2	£15,000

Apartments:	Bedrooms	Floor	Price
5 Parkers Courtyard	1	First	£230,000
6 Parkers Courtyard	1	First	£230,000
The Penthouse, Parkers Courtyard	2	Top	£350,000
8 Parkers Courtyard	1	Ground	£250,000
9 Parkers Courtyard	1	Ground	£250,000

Holroyd

Residential Sales & Lettings

Exclusively marketed by Holroyd Homes



Phone:	01444 440035
Email:	sales@holroydhomes.co.uk
Agent Website:	www.holroydhomes.co.uk
Developer Website:	www.firbankhomesltd.co.uk

Holroyd

Residential Sales & Lettings