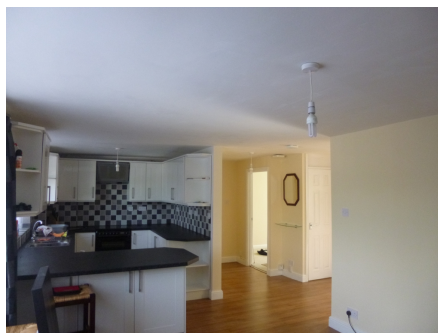


# BERRIDGE

ESTATE AGENTS & PROPERTY MANAGEMENT

The Elms, Leighton Buzzard, LU7

£387 **per month**



- Two Bedrooms
- Underfloor Heating
- Open Plan Kitchen / Lounge
- Newly Refurbished
- Private Parking
- Communal Facilities



58-62 Hockliffe Street, Leighton Buzzard, Bedfordshire, LU7 1HJ  
TEL: 01525 850333 FAX: 01525 851144 WEB: [www.BerridgeLB.com](http://www.BerridgeLB.com) EMAIL: [info@berridgelb.com](mailto:info@berridgelb.com)

# The Elms, Leighton Buzzard, LU7

---

## Communal Entry -

Secure entrance to communal hallway leading to front door.

## Entrance Hall -

Solid wood door part glazed, leading to an open plan kitchen lounge with laminate wood flooring and under floor heating thermostat controlled and smoke alarm.

## Kitchen / Lounge - 23'0" x 8'0" max 11'01" (7.01m x 2.44m)

UPVC Double glazed window to side aspect, wood laminate flooring, under floor heating, thermostat controlled, TV point, telephone point, fitted kitchen, integral washing machine, dishwasher, separate integral fridge and freezer, oven, hob, extractor fan, stainless steel 1 1/2 bowl sink with drainer.

## Bedroom One - 12'0" x 10'8" (3.66m x 3.25m)

UPVC Double glazed window to front aspect, under floor heating, thermostat controlled.

## Bedroom Two - 7'11" x 10'1" (2.41m x 3.07m)

UPVC Double glazed window to front aspect, under floor heating, thermostat controlled.

## Bathroom -

UPVC Double glazed frosted windows to front aspect, under floor heating, thermostat controlled, tiled floor, three piece suite comprising of WC, basin, electric shower over bath, shaving socket. stainless steel mixer taps.

## Outside -

One carport designated to property, plus visitors parking, communal gardens, communal waste disposal.

-

