

£900 per month

Foxdale Court, Terrace Road, Town Centre, BH2



- Easy access to Talbot Campus
- Walking distance to Lansdowne Campus
- Beach within walking distance
- Very close to Town Centre
- Close to Uni bus route
- All double bedrooms
- Double Glazing
- Gas Central Heating

Two double bedroom first floor apartment in Bournemouth town centre, close to UniBus routes. Bright lounge with Juliet balcony, open access to fully equipped kitchen. Two double bedrooms, bathroom, and 2 storage cupboards. Easy walking distance from beach and town centre with its many shops, cafes and bars. No parking. **9 months tenancy**

Foxdale Court, Terrace Road, Town Centre, BH2

Exterior

Access through archway, front door at rear of building. Entryphone access. Communal bins at rear of property. No parking.

Hallway

Main door enters into communal hallway with stairs to main apartment entrance. Entry into porch area, door into main hallway. Access doors to all rooms. Entryphone on wall, coat hooks on wall, large storage cupboard.

Lounge

3.55m x 3.18m (11'8" x 10'5")

Lounge furnished with 2x 3-seater sofas, coffee table, small TV table. Double patio doors give way to Juliet balcony. Archway access to kitchen.

Kitchen

Fully fitted kitchen with matching wall and base units, vinyl flooring, part-tiled walls. Sink with draining board, gas cooker comprising 4-ring gas hob and gas oven, fridge/freezer including ice-maker, washing machine. Microwave, toaster & kettle included. New gas combi boiler.

Bedroom 1

2.95m x 2.77m (9'8" x 9'1")

Facing front. Double bed, wardrobe, chest of drawers, bedside table. Access to additional storage cupboard with hanging rail.

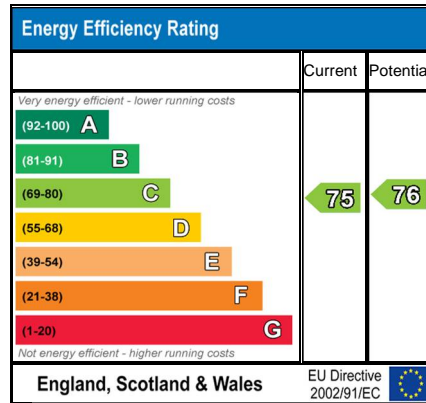
Bedroom 2

2.98m x 2.05m (9'9" x 6'9")

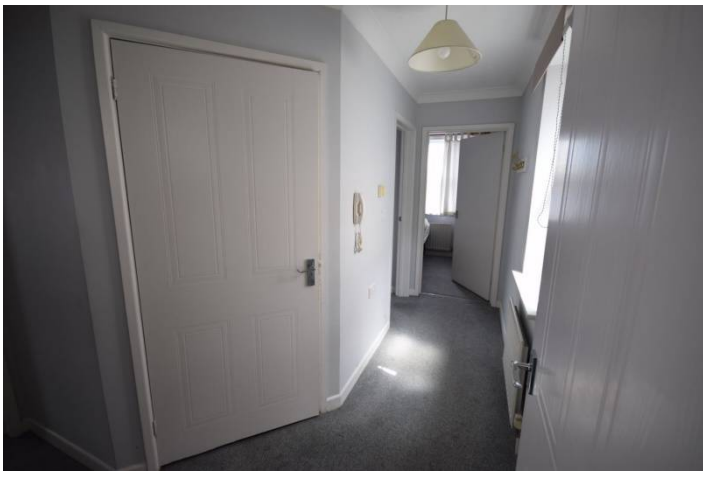
Facing front. Double bed, wardrobe. (Bed can convert to be single day bed)

Bathroom

Bathroom suite comprising bath with shower over (mains), wash hand basin, toilet. Heated towel rail. Tiled walls and vinyl flooring.

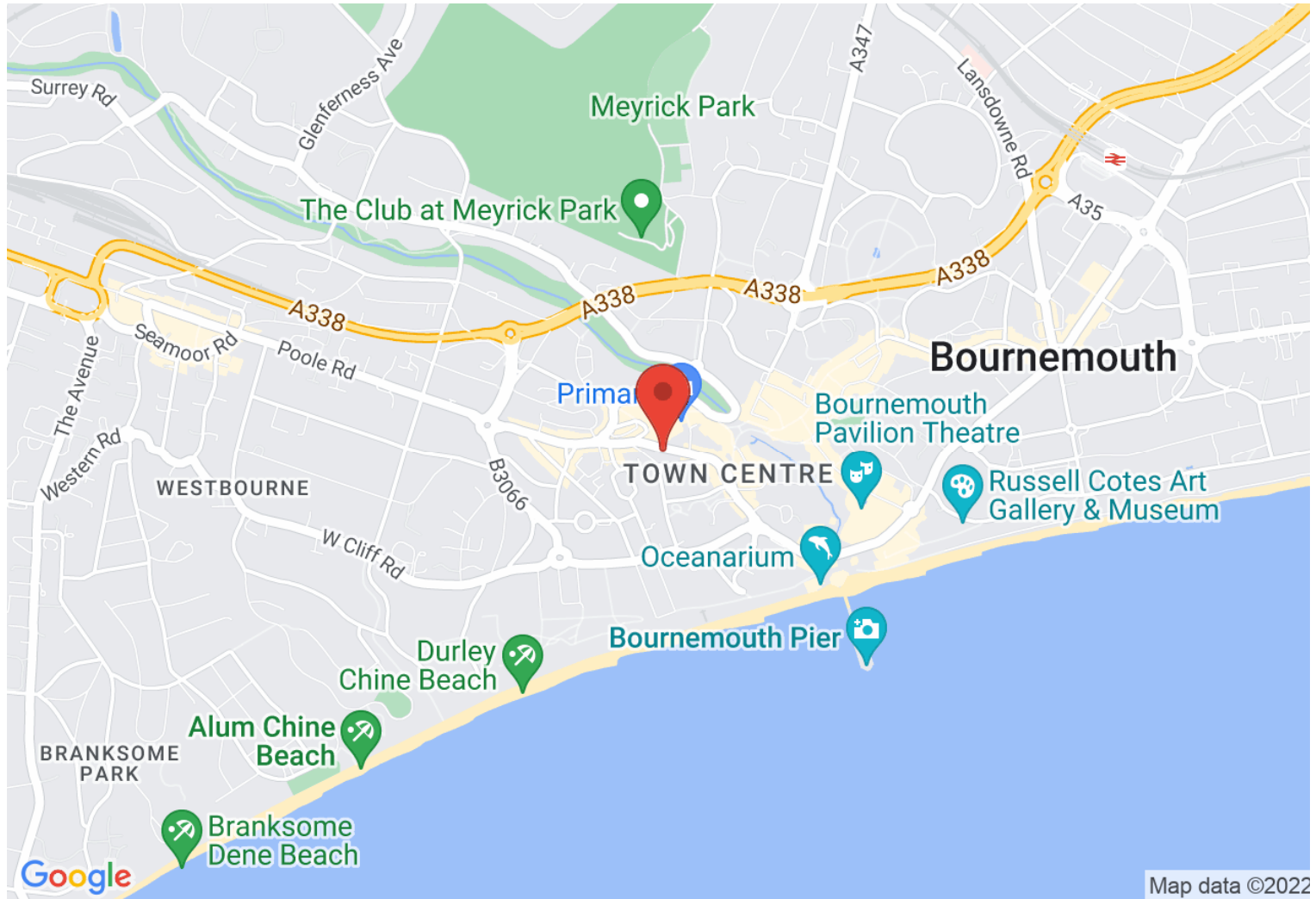






Directions

Location



VIEWING BY APPOINTMENT WITH AGENTS LETTINGSBU

LettingsBU, Poole House, Talbot Campus, Fern Barrow, Poole, Dorset, BH12 5BB T: 01202 961678 E: lettingsBU@bournemouth.ac.uk W: www.lettingsbu.com

General: While we endeavour to make our sales particulars fair, accurate and reliable, they are only a general guide to the property and, accordingly, if there is any point which is of particular importance to you, please contact the office and we will be pleased to check the position for you, especially if you are contemplating travelling some distance to view the property.

Measurements: These approximate room sizes are only intended as general guidance. You must verify the dimensions carefully before ordering carpets or any built-in furniture.

Services: Please note we have not tested the services or any of the equipment or appliances in this property, accordingly we strongly advise prospective buyers to commission their own survey or service reports before finalizing their offer to purchase.

THESE PARTICULARS ARE ISSUED IN GOOD FAITH BUT DO NOT CONSTITUTE REPRESENTATIONS OF FACT OR FORM PART OF ANY OFFER OR CONTRACT. THE MATTERS REFERRED TO IN THESE PARTICULARS SHOULD BE INDEPENDENTLY VERIFIED BY PROSPECTIVE BUYERS OR TENANTS. NEITHER LETTINGSBU NOR ANY OF ITS EMPLOYEES OR AGENTS HAS ANY AUTHORITY TO MAKE OR GIVE ANY REPRESENTATION OR WARRANTY WHATSOEVER IN RELATION TO THIS PROPERTY. YOUR HOME IS AT RISK IF YOU DO NOT KEEP UP REPAYMENTS ON A MORTGAGE OR OTHER LOAN SECURED ON IT.

Written quotations available on request. All loans secured on property. Life assurance is usually required.