



BUTLER & STAG

Blondin Street | Bow
London | E3

Smart and well-presented three bedroom house situated on this quiet turning, in close proximity to Roman Road Market and several transport links.

Three Bedroom House / Two Bathrooms / Excellent Location / Available Immediately / Part Furnished / Good Transport Links

£1,800 per month

Smart and well-presented three bedroom house situated on this quiet turning, in close proximity to Roman Road Market and several transport links.

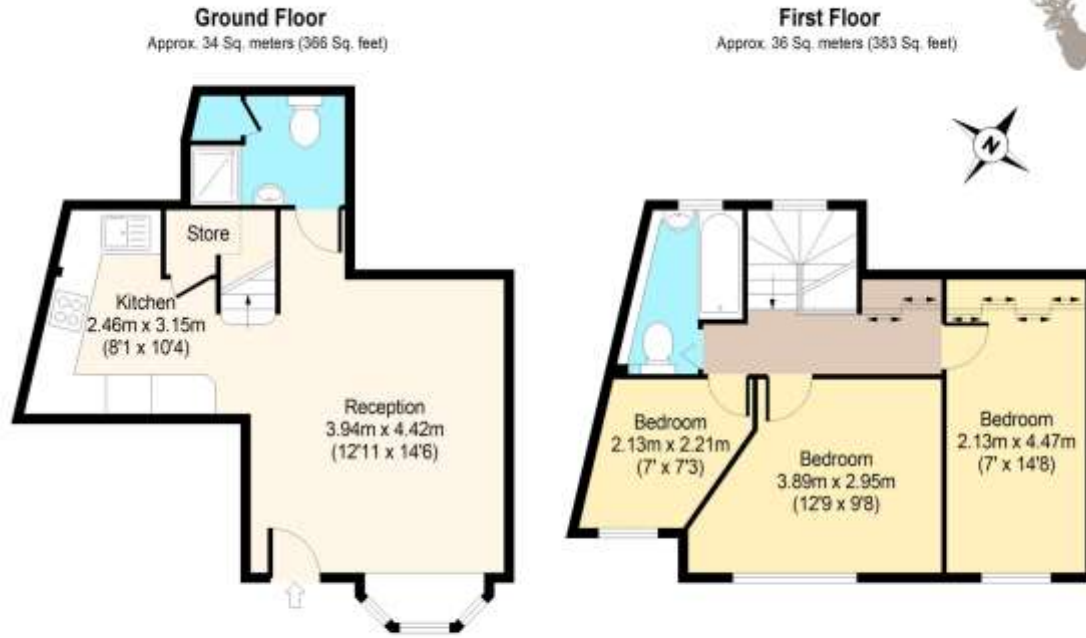
Accommodation on the ground-floor comprises a good size living room with space for dining table and chairs, fitted kitchen and a modern shower room.

Upstairs there are two double bedrooms, third single bedroom and a family bathroom. Blondin Street is well located for easy access to Victoria Park and good transport links, including Bow Road (District and Hammersmith & City) Bow Church DLR and Mile End (Central line). Available immediately, part furnished.





Blondin Street, E3



Total area: approx. 70 Sq. meters (749 Sq. feet)
 For illustration purposes only - not to scale
 www.londonpropertyassessments.co.uk



Butler & Stag

508 Roman Road, Bow, London, E3 | 020 8102 1236 |
 bow@butlerandstag.com | www.butlerandstag.uk

Important Notice - These particulars have been prepared in good faith and they are not intended to constitute part of an offer or contract. We have not performed a structural survey on this property and the services, appliances and specific fittings have not been tested. All photographs, measurements, floor plans and distances referred to are given as a guide and should not be relied upon.

