



BUTLER & STAG

Beatrice House
Stepney Green | Stepney
London | E1

Smart and well-presented one bedroom apartment overlooking the picturesque Stepney Green and just a short walk from Stepney Green underground station.

*Large One Bedroom Apartment / Views over Stepney Green / Good Transport Links / Fully Furnished / Available Immediately
Off Street Parking*

£1,400 per month

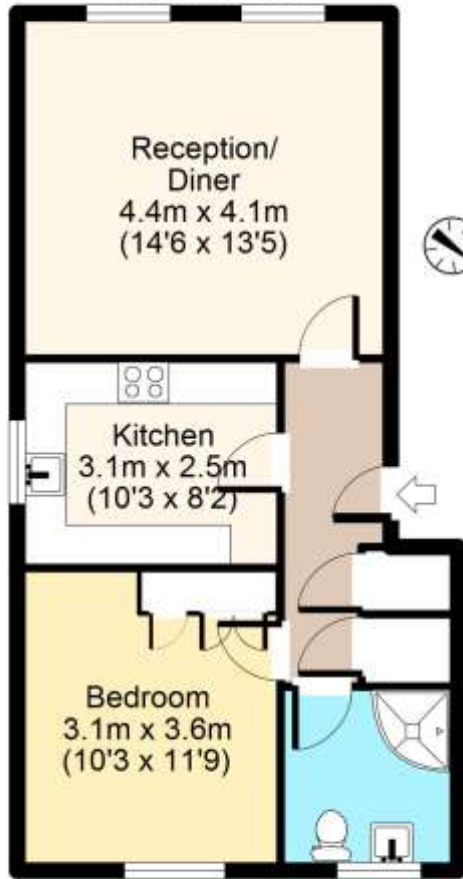
Smart and well-presented one bedroom apartment overlooking the picturesque Stepney Green and just a short walk from Stepney Green underground station. Accessed via security entrance and located on the second floor of this good looking purpose built development, the accommodation includes a well-proportioned living/dining room that boasts views directly over the green, separate fully fitted and modern kitchen, large double bedroom with built-in wardrobes and a smart bathroom with walk-in shower. Beatrice House is well located for Shoreditch, Spitalfields, Broadway and Columbia Road markets, whilst Stepney Green tube (District and Hammersmith & City) is a short walk along with several bus routes into the City from Mile End Road. Available furnished for immediate occupation.





Stepney Green, E1

Second Floor



Total area: approx. 49 sq. metres (525 sq. feet)
For illustration purposes only - not to scale
www.londonpropertyassessments.co.uk

Butler & Stag

508 Roman Road, Bow, London, E3 | 020 8102 1236 |
bow@butlerandstag.com | www.butlerandstag.uk

Important Notice - These particulars have been prepared in good faith and they are not intended to constitute part of an offer or contract. We have not performed a structural survey on this property and the services, appliances and specific fittings have not been tested. All photographs, measurements, floor plans and distances referred to are given as a guide and should not be relied upon.

