

# CASTLEVIEW HOMES

**£1,250 per month**

**Norfolk Gardens, Littlehampton, BN17**



- End of Terrace House
- Three Double Bedrooms
- Walking distance from beach
- Gas Central Heating
- West Facing Rear Garden
- Clean, tidy, and functional state ready to occupy from 15th Nov'20
- Garage available in compound (if req'd)
- Pet friendly property!

A spacious 3 bedroom EOT with garden. This property is in good order throughout and is available for long let. Pet friendly property. References and deposit required.



# Norfolk Gardens, Littlehampton, BN17

## Front

View of the front of the house

## Sitting Room

Bright and light sitting room with an east/west aspect; open plan layout with the dining room.

## Dining Room

Bright and light dining room with an east/west aspect; open plan layout with the sitting room.

## Kitchen

Fully fitted kitchen with door to west facing garden.

## Bathroom

Modern bathroom with part tiled walls.

## Bedroom 1

Spacious and bright double main bedroom.

## Bedroom 2

Spacious and bright double second bedroom.

## Bedroom 3

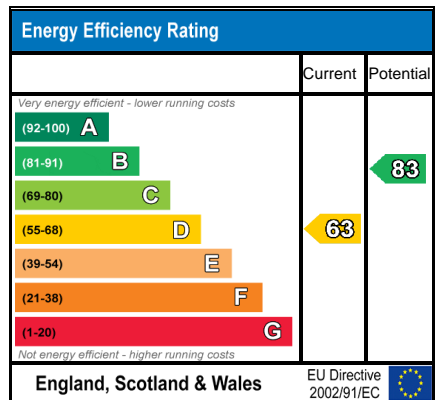
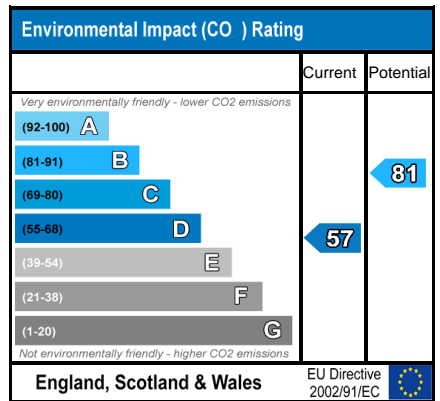
Spacious and bright single third bedroom.

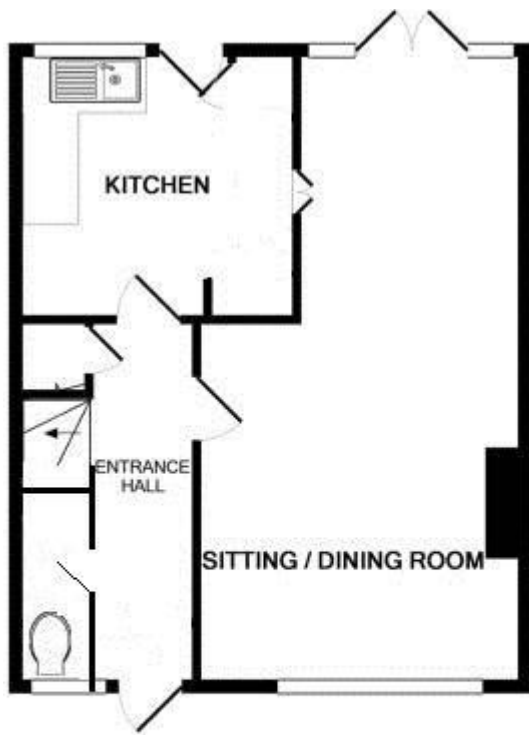
## Garden

Seculuded west facing garden with rear access to a garage in a compound (garage is not included but if required may be included at an additional rent)

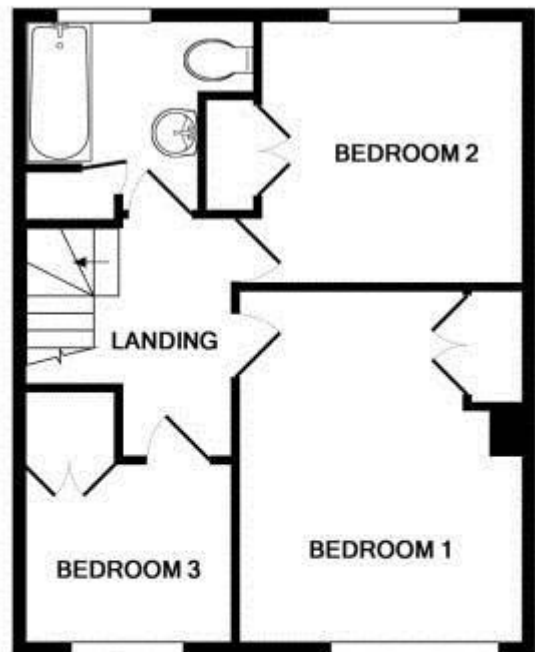
## Communal Gardens

Pleasant communal gardens around which this and the neighbouring houses sit.





GROUND FLOOR



Whilst every attempt has been made to ensure the accuracy of the floor plans contained here, measurements of doors, windows and rooms are approximate, and no responsibility is taken for error, omission or mis-statement. These plans are for identification purposes only and are not drawn to scale.  
 Made with Metropix ©2015

**VIEWING BY APPOINTMENT WITH AGENTS CASTLEVIEW HOMES**

292 Goring Road, Goring by Sea, Worthing, West Sussex, BN12 4PE T: 01903 539 539 E: info@castleviewhomes.co.uk W: www.castleviewhomes.co.uk

General: While we endeavour to make our sales particulars fair, accurate and reliable, they are only a general guide to the property and, accordingly, if there is any point which is of particular importance to you, please contact the office and we will be pleased to check the position for you, especially if you are contemplating travelling some distance to view the property.

Measurements: These approximate room sizes are only intended as general guidance. You must verify the dimensions carefully before ordering carpets or any built-in furniture.

Services: Please note we have not tested the services or any of the equipment or appliances in this property, accordingly we strongly advise prospective buyers to commission their own survey or service reports before finalizing their offer to purchase.

THESE PARTICULARS ARE ISSUED IN GOOD FAITH BUT DO NOT CONSTITUTE REPRESENTATIONS OF FACT OR FORM PART OF ANY OFFER OR CONTRACT. THE MATTERS REFERRED TO IN THESE PARTICULARS SHOULD BE INDEPENDENTLY VERIFIED BY PROSPECTIVE BUYERS OR TENANTS. NEITHER CASTLEVIEW HOMES NOR ANY OF ITS EMPLOYEES OR AGENTS HAS ANY AUTHORITY TO MAKE OR GIVE ANY REPRESENTATION OR WARRANTY WHATSOEVER IN RELATION TO THIS PROPERTY.

YOUR HOME IS AT RISK IF YOU DO NOT KEEP UP REPAYMENTS ON A MORTGAGE OR OTHER LOAN SECURED ON IT.

Written quotations available on request. All loans secured on property. Life assurance is usually required.