

# CASTLEVIEW HOMES

**£1,250 per month**

**New Road, Littlehampton, BN17**



- 2-double bedrooms
- Close to shops and public transport
- Town Centre location
- Terraced House
- Minutes' walk from River Arun and the sea
- Available for occupation from 29th Aug'22

**AVAILABLE FOR OCCUPATION FROM 29TH AUGUST 2022...**

**Ideal family home to rent in the heart of Littlehampton town centre; viewing is highly recommended.**

# New Road, Littlehampton, BN17

## Front Elevation

Spacious 2 bed house close to Littlehampton centre and beach. On street parking

## Dining Room

right and spacious dining room connecting onto the main sitting room.

## Bedroom 1

Double master bedroom with south facing bay window.

## Bedroom 2

Double master bedroom with south facing bay window.

## Kitchen

Fully fitted kitchen with side door to rear and good-sized gardens.

## Bathroom / WC

Spacious and bright bathroom / WC with a separate walk-in shower and double 'his and hers' vanity sink. Cupboard housing Worcester gas fired boiler.

## Rear Garden

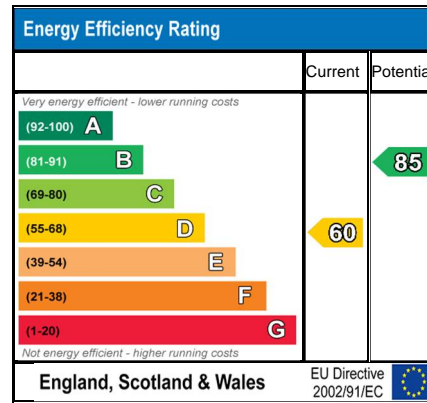
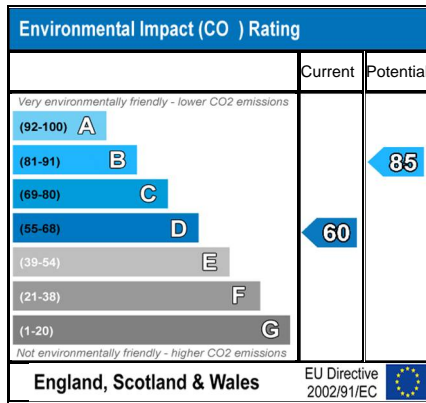
Rear garden is approx 17m x 5m and is laid partially to lawn with some additional raised decking area.

## Ground Floor WC

The property benefits from a ground floor WC.

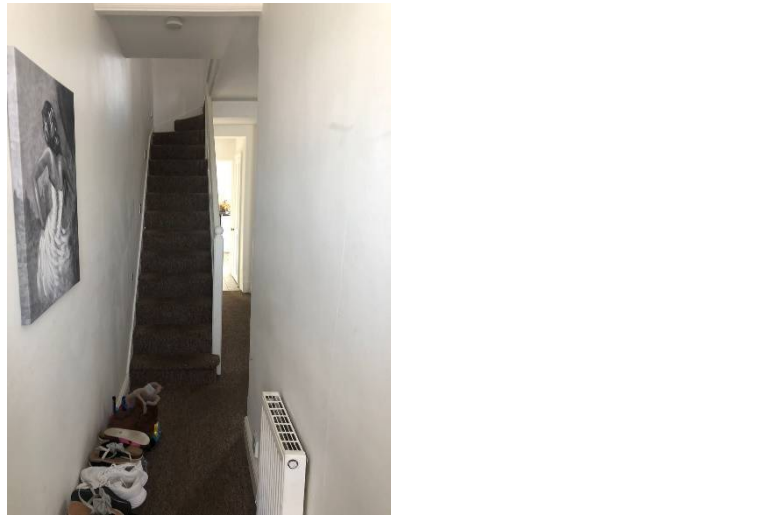
## Hallway

Entrance hallway with gas radiator.



Total area: approx. 78.7 sq. metres (847.5 sq. feet)

Produced and copyright of Castleview Homes Estate Agents. Measurements to the standards prescribed by RIC's code of measuring practice. This floor plan is for identification purposes only and is not drawn to scale.  
Plan produced using PlanUp.



## Directions

## Location



VIEWING BY APPOINTMENT WITH AGENTS CASTLEVIEW HOMES

271 Goring Road, Goring-by-sea, Worthing, West Sussex, BN12 4PA T: 01903 539539 E: [info@castleviewhomes.co.uk](mailto:info@castleviewhomes.co.uk) W: [www.castleviewhomes.co.uk](http://www.castleviewhomes.co.uk)

General: While we endeavour to make our sales particulars fair, accurate and reliable, they are only a general guide to the property and, accordingly, if there is any point which is of particular importance to you, please contact the office and we will be pleased to check the position for you, especially if you are contemplating travelling some distance to view the property.

Measurements: These approximate room sizes are only intended as general guidance. You must verify the dimensions carefully before ordering carpets or any built-in furniture.

Services: Please note we have not tested the services or any of the equipment or appliances in this property, accordingly we strongly advise prospective buyers to commission their own survey or service reports before finalizing their offer to purchase.

THESE PARTICULARS ARE ISSUED IN GOOD FAITH BUT DO NOT CONSTITUTE REPRESENTATIONS OF FACT OR FORM PART OF ANY OFFER OR CONTRACT. THE MATTERS REFERRED TO IN THESE PARTICULARS SHOULD BE INDEPENDENTLY VERIFIED BY PROSPECTIVE BUYERS OR TENANTS. NEITHER CASTLEVIEW HOMES NOR ANY OF ITS EMPLOYEES OR AGENTS HAS ANY AUTHORITY TO MAKE OR GIVE ANY REPRESENTATION OR WARRANTY WHATEVER IN RELATION TO THIS PROPERTY.

YOUR HOME IS AT RISK IF YOU DO NOT KEEP UP REPAYMENTS ON A MORTGAGE OR OTHER LOAN SECURED ON IT.

Written quotations available on request. All loans secured on property. Life assurance is usually required.

