

CASTLEVIEW HOMES

£1,000 per month
Hawthorn Gardens, Worthing, BN14



- One Double Bedroom Ground Floor Flat
- Spacious Living / Dining Room
- Modern Kitchen
- Modern Shower Room
- Highly Sought After Broadwater Area
- Off Street Parking
- Electric Heating
- Available to View Immediately
- Viewing Highly Recommended

AVAILABLE TO VIEW IMMEDIATELY...DESIRABLE ONE-BEDROOM APARTMENT
Castleview Homes are delighted to offer for rent this well-presented ground floor one bedroom flat, situated in this favoured location of Worthing, close to local shopping facilities, parks, schools, bus routes and mainline station. Accommodation offers entrance hall, lounge, kitchen, one double bedroom and bathroom/WC. Other benefits include long let, communal gardens and parking on the road.

Hawthorn Gardens, Worthing, BN14

Front Elevation

A well positioned purpose built block of flats in the heart of Broadwater close to all amenities, shops, and mainline transport.

Sitting & Dining Room

Spacious sitting / dining area with a bright outlook over the communal gardens and grounds.

Kitchen

Modern fully fitted kitchen with ample worktop surfaces and cupboard space.

Bedroom Image 1

Spacious double bedroom being bright and plenty of cupboard / wardrobe space.

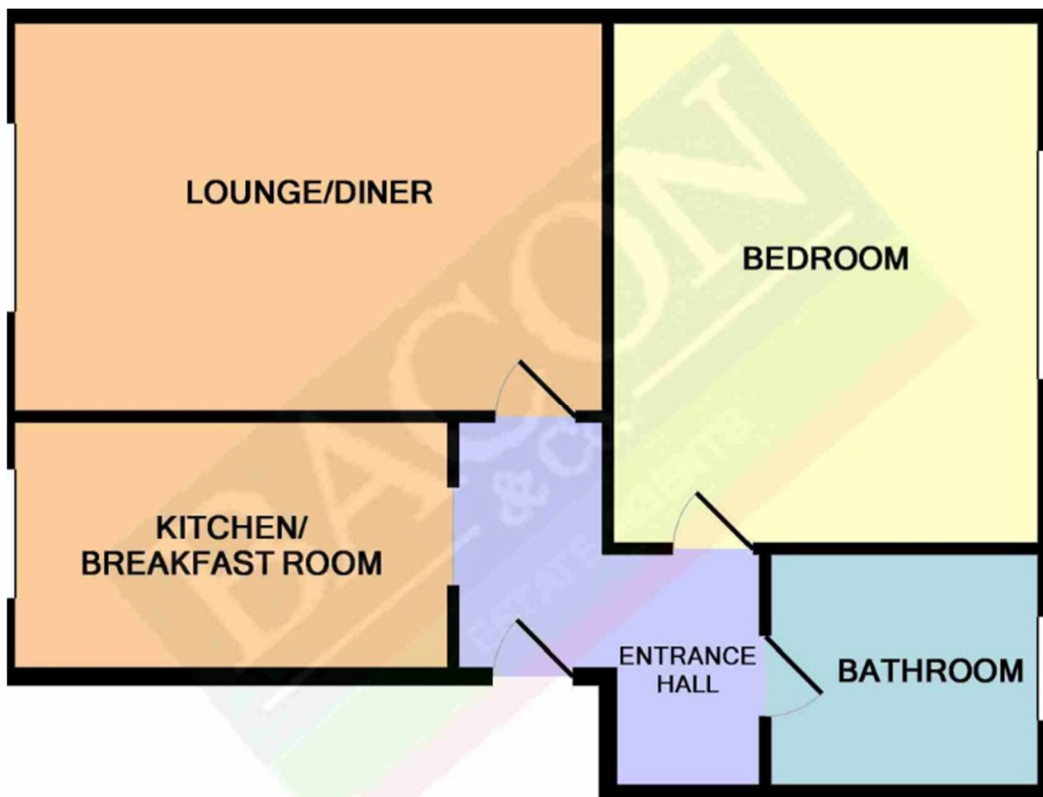
Bedroom Image 2

Alternate view of the double bedroom.

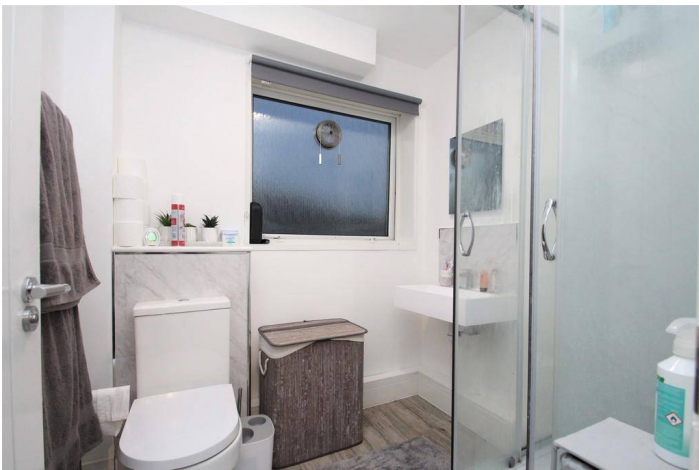
Bathroom & WC

Well laid out shower and WC facilities.

Energy Efficiency Rating		
	Current	Potential
<i>Very energy efficient - lower running costs</i>		
(92-100) A		
(81-91) B		
(69-80) C		72
(55-68) D		
(39-54) E	42	
(21-38) F		
(1-20) G		
<i>Not energy efficient - higher running costs</i>		
England, Scotland & Wales	EU Directive 2002/91/EC	



Hawthorn Gardens, Worthing, BN14



Hawthorn Gardens, Worthing, BN14

Directions

Location



VIEWING BY APPOINTMENT WITH AGENTS CASTLEVIEW HOMES

271 Goring Road, Goring-by-sea, Worthing, West Sussex, BN12 4PA T: 01903 539539 E: info@castleviewhomes.co.uk W: www.castleviewhomes.co.uk

General: While we endeavour to make our sales particulars fair, accurate and reliable, they are only a general guide to the property and, accordingly, if there is any point which is of particular importance to you, please contact the office and we will be pleased to check the position for you, especially if you are contemplating travelling some distance to view the property.

Measurements: These approximate room sizes are only intended as general guidance. You must verify the dimensions carefully before ordering carpets or any built-in furniture.

Services: Please note we have not tested the services or any of the equipment or appliances in this property, accordingly we strongly advise prospective buyers to commission their own survey or service reports before finalizing their offer to purchase.

THESE PARTICULARS ARE ISSUED IN GOOD FAITH BUT DO NOT CONSTITUTE REPRESENTATIONS OF FACT OR FORM PART OF ANY OFFER OR CONTRACT. THE MATTERS REFERRED TO IN THESE PARTICULARS SHOULD BE INDEPENDENTLY VERIFIED BY PROSPECTIVE BUYERS OR TENANTS. NEITHER CASTLEVIEW HOMES NOR ANY OF ITS EMPLOYEES OR AGENTS HAS ANY AUTHORITY TO MAKE OR GIVE ANY REPRESENTATION OR WARRANTY WHATEVER IN RELATION TO THIS PROPERTY.

YOUR HOME IS AT RISK IF YOU DO NOT KEEP UP REPAYMENTS ON A MORTGAGE OR OTHER LOAN SECURED ON IT.

Written quotations available on request. All loans secured on property. Life assurance is usually required.

