

CASTLEVIEW HOMES

Guide Price £1,250 per month

Woburn Court, Richmond Road, Worthing, BN11

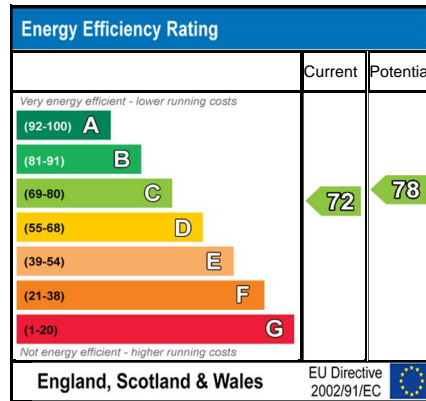
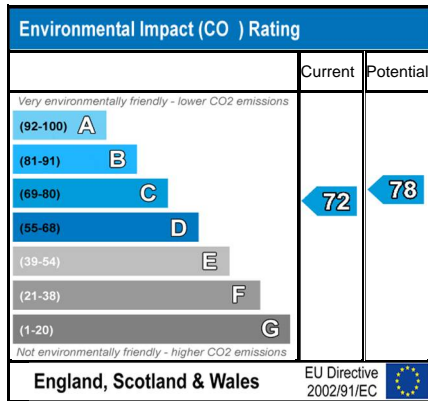


- Two Double Bedrooms
- Garage (available to rent at an additional charge per month)
- Fully refurbished to a high standard
- Balcony - south facing
- Lift
- Communal Gardens
- Walking Distance to Seafront and Town
- Security Entryphone System
- Spacious Reception Room

PURPOSE BUILT TWO DOUBLE BEDROOM APARTMENT THAT HAS JUST BEEN FULLY REFURBISHED TO A HIGH STANDARD BENEFITTING FROM A SOUTH FACING BALCONY. A well-proportioned second floor apartment benefiting from passenger lifts to all floors. This smartly kept building is close to the town centre, minutes walk from the shops and sea, with the apartment enjoying very pleasant views from its triple aspect overlooking a tree lined Richmond Road and other surrounding roads. The property is available to rent on a long term basis to a quality tenant with a

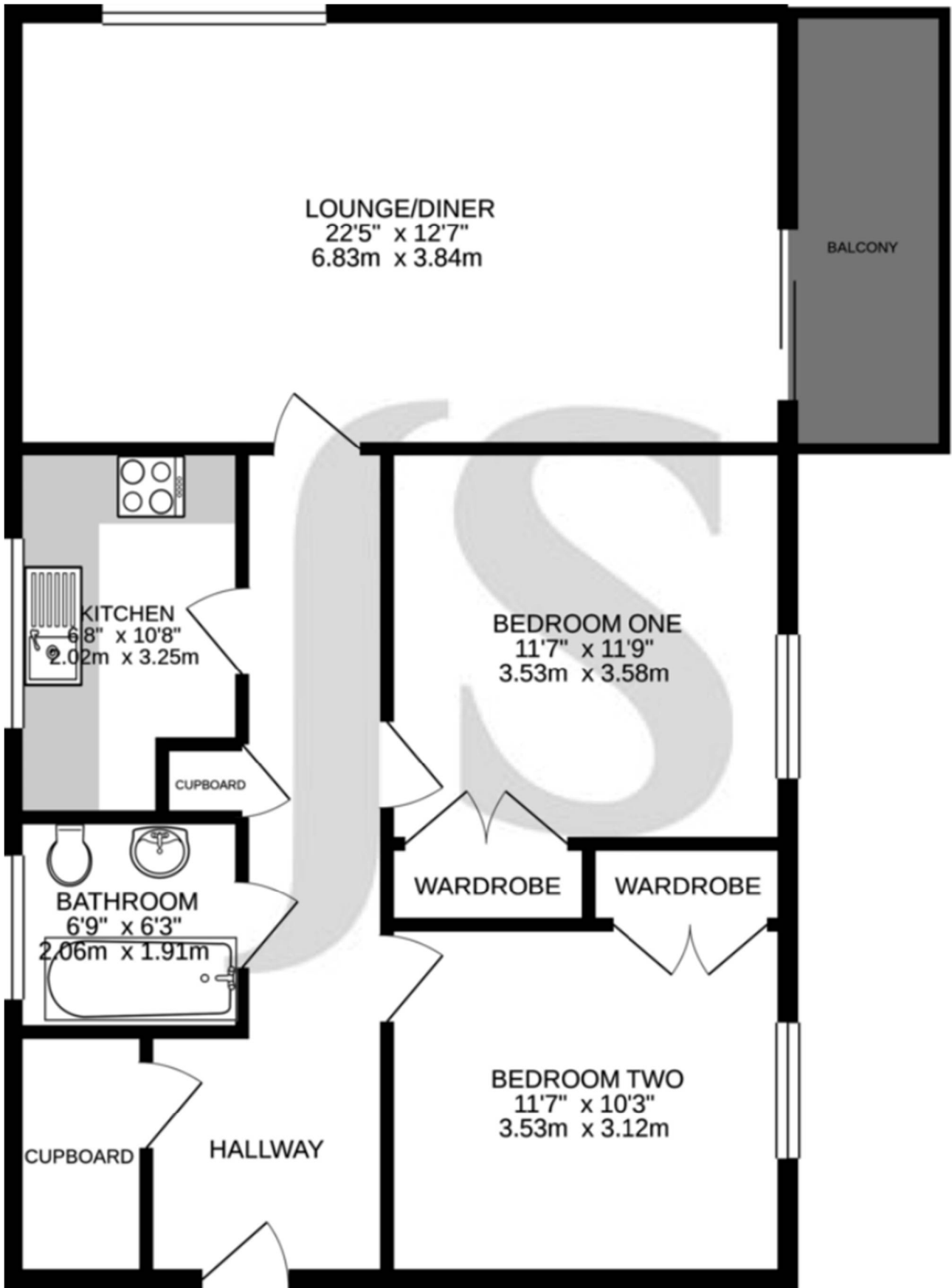
track record of successfully renting property. The successful tenants must be non-smokers without pets and able to fully pass referencing (a suitable guarantor may be required). The block has off street parking on a first come first serve basis and a garage is available to rent at an additional charge per month (if required).

Woburn Court, Richmond Road, Worthing, BN11









Whilst every attempt has been made to ensure the accuracy of the floorplan contained here, measurements of doors, windows, rooms and any other items are approximate and no responsibility is taken for any error, omission or mis-statement. This plan is for illustrative purposes only and should be used as such by any prospective purchaser. The services, systems and appliances shown have not been tested and no guarantee as to their operability or efficiency can be given.

Made with Metropix ©2021

Directions

Location



VIEWING BY APPOINTMENT WITH AGENTS CASTLEVIEW HOMES

271 Goring Road, Goring-by-sea, Worthing, West Sussex, BN12 4PA T: 01903 539539 E: info@castleviewhomes.co.uk W: www.castleviewhomes.co.uk

General: While we endeavour to make our sales particulars fair, accurate and reliable, they are only a general guide to the property and, accordingly, if there is any point which is of particular importance to you, please contact the office and we will be pleased to check the position for you, especially if you are contemplating travelling some distance to view the property.

Measurements: These approximate room sizes are only intended as general guidance. You must verify the dimensions carefully before ordering carpets or any built-in furniture.

Services: Please note we have not tested the services or any of the equipment or appliances in this property, accordingly we strongly advise prospective buyers to commission their own survey or service reports before finalizing their offer to purchase.

THESE PARTICULARS ARE ISSUED IN GOOD FAITH BUT DO NOT CONSTITUTE REPRESENTATIONS OF FACT OR FORM PART OF ANY OFFER OR CONTRACT. THE MATTERS REFERRED TO IN THESE PARTICULARS SHOULD BE INDEPENDENTLY VERIFIED BY PROSPECTIVE BUYERS OR TENANTS. NEITHER CASTLEVIEW HOMES NOR ANY OF ITS EMPLOYEES OR AGENTS HAS ANY AUTHORITY TO MAKE OR GIVE ANY REPRESENTATION OR WARRANTY WHATEVER IN RELATION TO THIS PROPERTY.

YOUR HOME IS AT RISK IF YOU DO NOT KEEP UP REPAYMENTS ON A MORTGAGE OR OTHER LOAN SECURED ON IT.

Written quotations available on request. All loans secured on property. Life assurance is usually required.