

£189,950

6 Whitegate Grove, Longton



- MEWS STYLE HOUSE
- THREE BEDROOMS
- BEAUTIFULLY PRESENTED INTERIOR
- OFF ROAD PARKING
- GAS CENTRAL HEATING
- UPVC DOUBLE GLAZING
- POPULAR LOCALITY
- IDEAL FOR FTB
- VIEWING ESSENTIAL!

This beautifully presented three-bedroom Mews style house offers the perfect blend of contemporary living and classic charm. Arranged over two floors, the property boasts a light-filled interior, stylish finishes, and a thoughtfully designed layout ideal for both family life and entertaining. There is a driveway providing spaces for two vehicles and an enclosed garden to the rear. The property is perfect for first time buyers but would equally suit investors. This is an opportunity not to be missed!

6 Whitegate Grove, Longton

HALLWAY

uPVC door, tile floor, central heating radiator, store.

GROUND FLOOR WC

Low level WC, wash hand basin, central heating radiator, tiling to floor, uPVC double glazing.

KITCHEN

12'4" x 11'4" (3.76m x 3.45m)

Single drainer sink unit with cupboards below, base and wall storage units. Integrated gas hob with electric oven and extractor, plumbing for washing machine. Part tiling to walls, uPVC double glazing, tiled floor, central heating radiator, combi boiler, shutter blinds.

LOUNGE

19'7" x 12'2" (5.97m x 3.71m)

Fitted carpet, uPVC double glazing, shutter blinds, central heating radiator, media wall, French door to rear garden.

FIRST FLOOR

LANDING

Fitted carpet to stairs and landing, airing cupboard, central heating radiator, uPVC double glazing.

BEDROOM ONE

12'10" x 10'4" to wardrobes (3.91m x 3.15m)

Laminate flooring, central heating radiator, uPVC double glazing, shutter blinds, fitted wardrobes.

BEDROOM TWO

12'8" x 11'1" Average measurement (3.86m x 3.38m)

Laminate flooring, uPVC double glazing, shutter blinds, central heating radiator,

BEDROOM THREE

8'7" x 6'6" (2.62m x 1.98m)

Laminate flooring, central heating radiator, uPVC double glazing, shutter blinds.

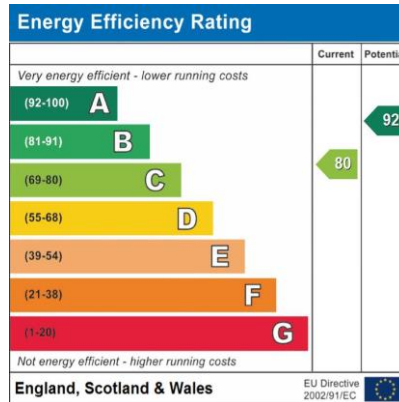
BATHROOM/WC

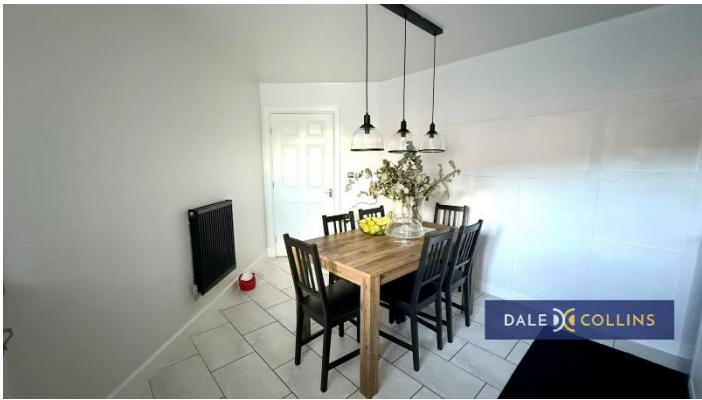
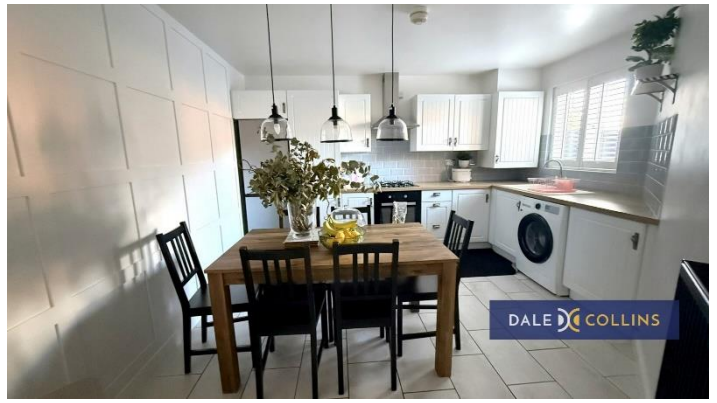
7'0" x 6'7" (2.13m x 2.01m)

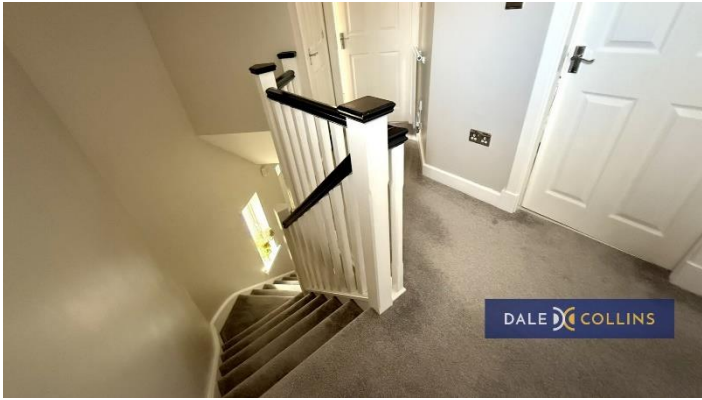
Panelled bath with shower over and screen, vanity wash hand basin, low level WC, central heating radiator, uPVC double glazing, laminate flooring.

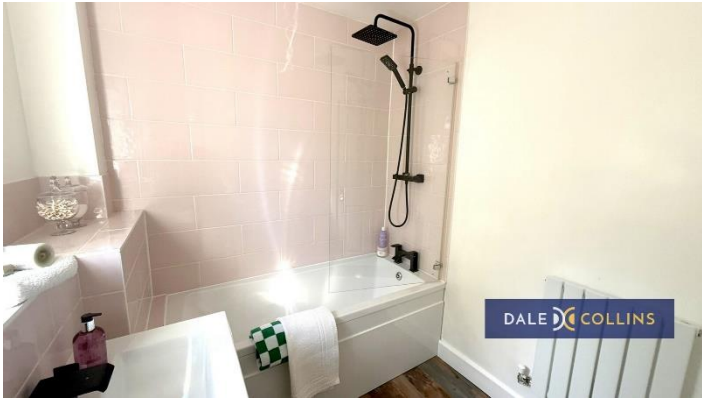
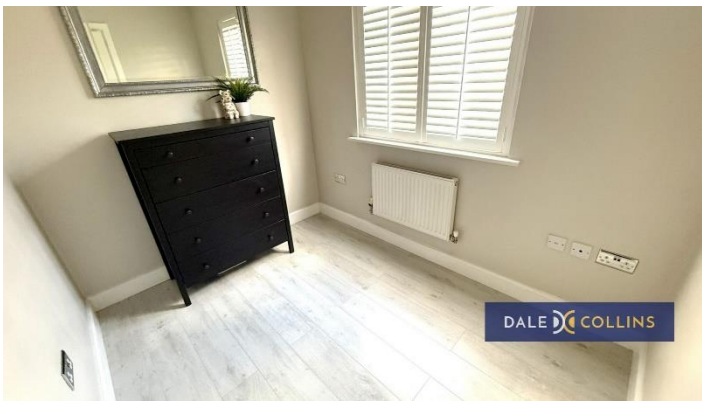
EXTERNALLY

Off road parking for two vehicles and gardens to the front, side and rear.

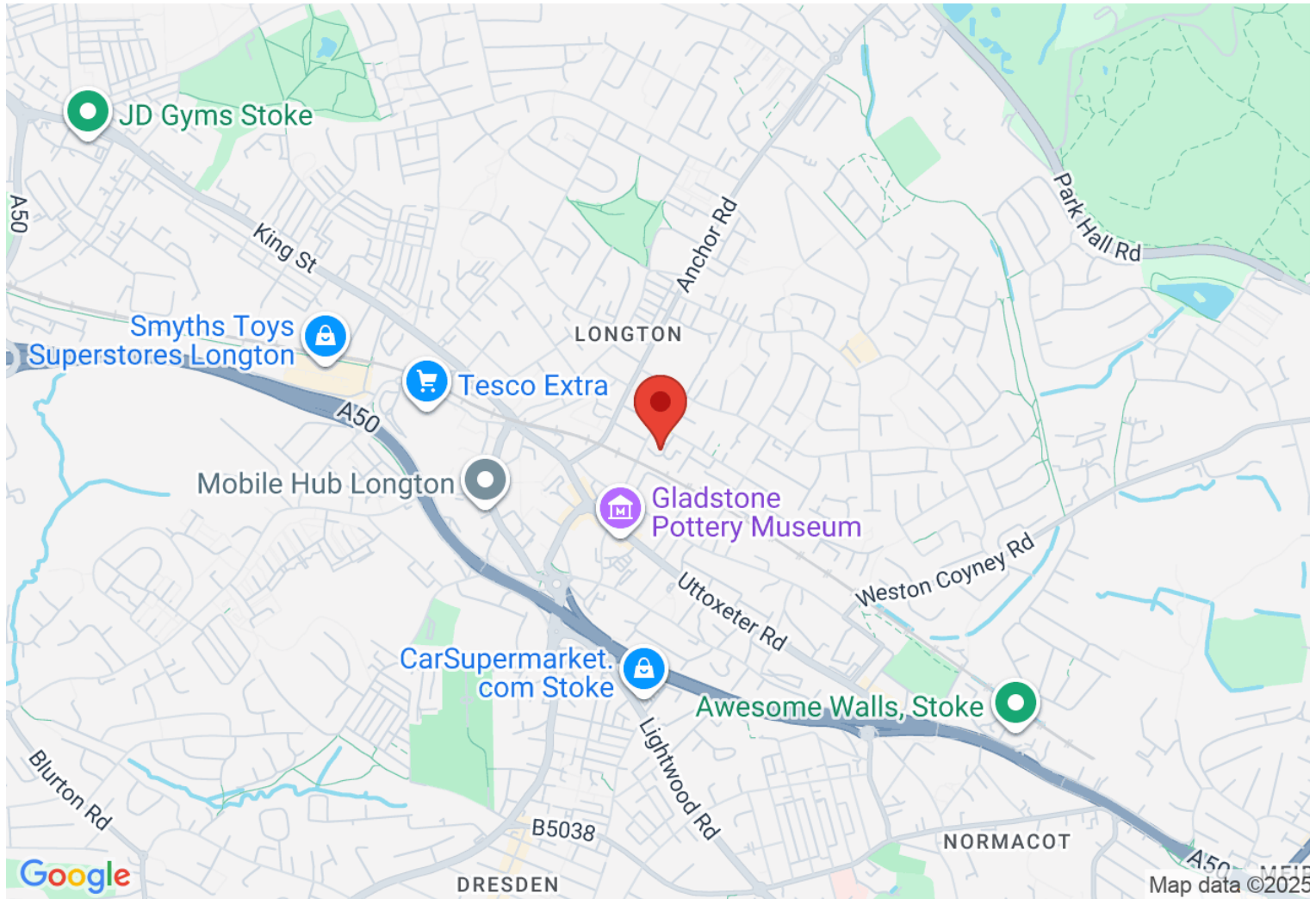








Location: ST3 1NG



VIEWING BY APPOINTMENT WITH AGENTS DALE AND COLLINS ESTATE AGENTS

Unit 14, Trentham Technology Park, Bellringer Road, Trentham, Stoke-on-Trent, Staffordshire, ST4 8LJ T: 01782 595050 E: sales@daleandcollins.com | lettings@daleandcollins.com W: www.daleandcollins.com

General: While we endeavour to make our sales particulars fair, accurate and reliable, they are only a general guide to the property and, accordingly, if there is any point which is of particular importance to you, please contact the office and we will be pleased to check the position for you, especially if you are contemplating travelling some distance to view the property.

Measurements: These approximate room sizes are only intended as general guidance. You must verify the dimensions carefully before ordering carpets or any built-in furniture.

Services: Please note we have not tested the services or any of the equipment or appliances in this property, accordingly we strongly advise prospective buyers to commission their own survey or service reports before finalizing their offer to purchase.

THESE PARTICULARS ARE ISSUED IN GOOD FAITH BUT DO NOT CONSTITUTE REPRESENTATIONS OF FACT OR FORM PART OF ANY OFFER OR CONTRACT. THE MATTERS REFERRED TO IN THESE PARTICULARS SHOULD BE INDEPENDENTLY VERIFIED BY PROSPECTIVE BUYERS OR TENANTS. NEITHER DALE AND COLLINS ESTATE AGENTS NOR ANY OF ITS EMPLOYEES OR AGENTS HAS ANY AUTHORITY TO MAKE OR GIVE ANY REPRESENTATION OR WARRANTY WHATEVER IN RELATION TO THIS PROPERTY.

YOUR HOME IS AT RISK IF YOU DO NOT KEEP UP REPAYMENTS ON A MORTGAGE OR OTHER LOAN SECURED ON IT.

Written quotations available on request. All loans secured on property. Life assurance is usually required.