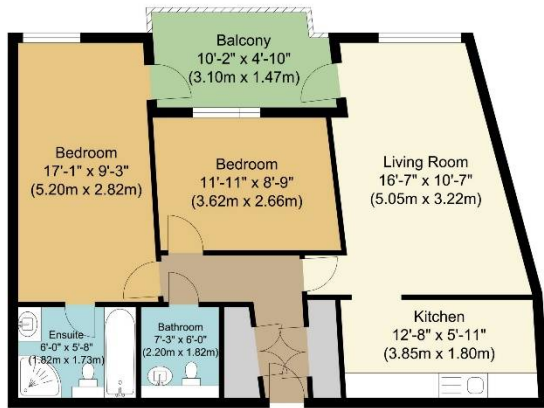
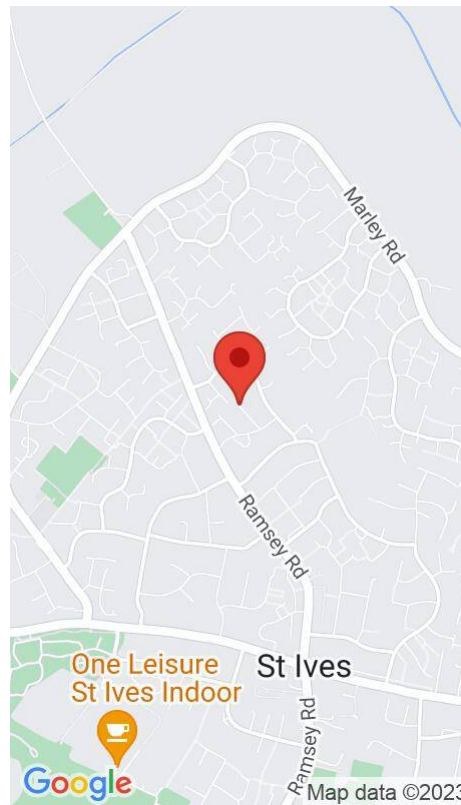


TOTAL APPROX FLOOR AREA 690.82 SQ. FT. (AREA 64.18 SQ. M)

Whilst every attempt has been made to ensure the accuracy of the floor plan contained here, measurements of doors, windows, rooms and any other items are approximate and no responsibility is taken for any error, omission or mis-statement. This plan is for illustrative purposes only and should be used as such by any prospective purchaser.



Approximate Floor Area  
690.82 sq. ft.  
(64.18 sq. m)



## PCHomes Development Adjust v2.1

102 Grasmere Road, South  
Tankerton, Whitstable, Kent,  
CT5

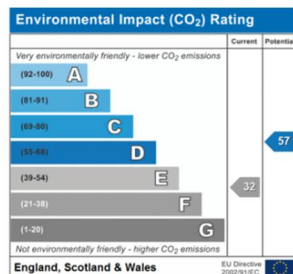
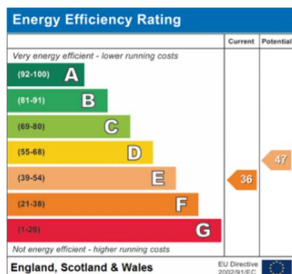
01227280190

info@pchomesnet.net



Lincoln Avenue, St Ives, PE27

Offers in excess of  
£199,995 Freehold





## Lincoln Avenue, St Ives, PE27

Offers in excess of £199,995 Freehold

- Detached Bungalow
- Kitchen
- Double Glazing
- Driveway Parking
- Lounge/Dining Room
- 4 Bedrooms
- Enclosed Rear Garden
- Sold With No Upward Chain

Located in the heart of St Ives this detached versatile bungalow offers accommodation comprising lounge/diner, kitchen, four bedrooms and family bathroom.

