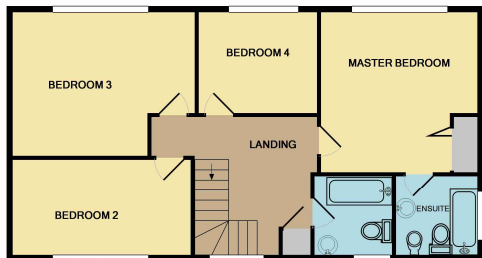




GROUND FLOOR  
APPROX. FLOOR  
AREA 111.6 SQ.M.  
(1201 SQ.FT.)



1ST FLOOR  
APPROX. FLOOR  
AREA 70.3 SQ.M.  
(757 SQ.FT.)

TOTAL APPROX. FLOOR AREA 181.9 SQ.M. (1958 SQ.FT.)

Whilst every attempt has been made to ensure the accuracy of the floor plan contained here, measurements of doors, windows, rooms and any other items are approximate and no responsibility is taken for any error, omission, or mis-statement. This plan is for illustrative purposes only and should be used as such by any prospective purchaser. The services, systems and appliances shown have not been tested and no guarantee as to their operability or efficiency can be given.

Made with Metropix 52008



Move Hub

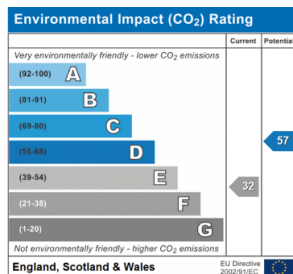
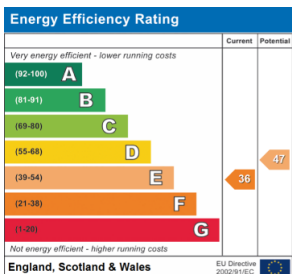
8 Mulberry Place, Pinnell  
Road, Eltham, London, SE9

020 8859 1700

info@movehub.co.uk

Mortimer Row, Somersham, PE28

£345 per month







## Mortimer Row, Somersham, PE28

£345 per month

- Studio Apartment
- Kitchen
- Double Glazing
- Unfurnished
- Lounge/Bedroom
- Bathroom
- Allocated Parking
- Available Now

Situated in a small development this one bedroom studio flat with accommodation comprising lounge/bedroom, kitchen, bathroom and dressing area. Further benefiting from gas fired radiator heating, double glazing and allocated parking. Unfurnished. Available now.

