



£899,950

Dormers Wells Lane, UB1 3HU

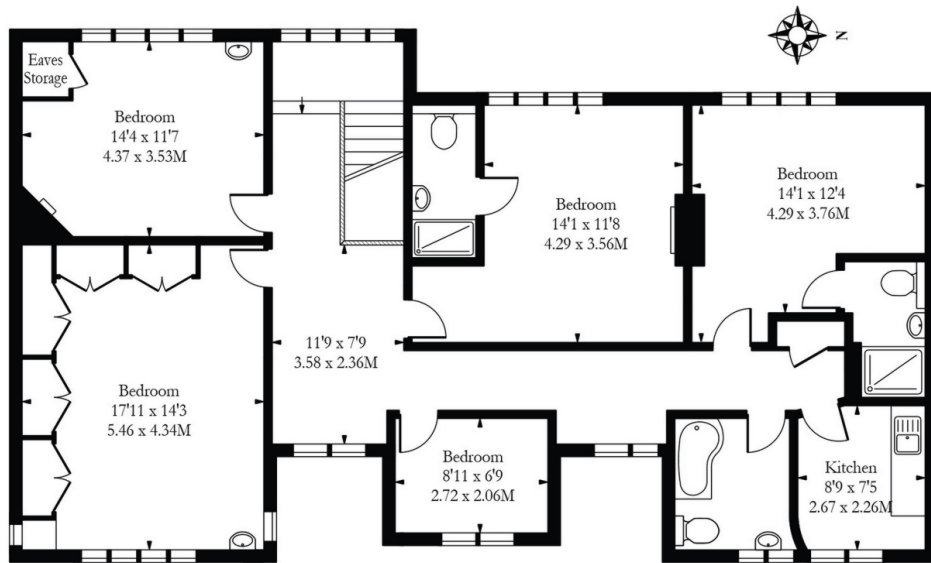


- 6 Bedrooms
- Over 2,700 Sq Ft
- Detached
- Parking For 6 Cars
- 2 En Suite Bedrooms
- Period Features

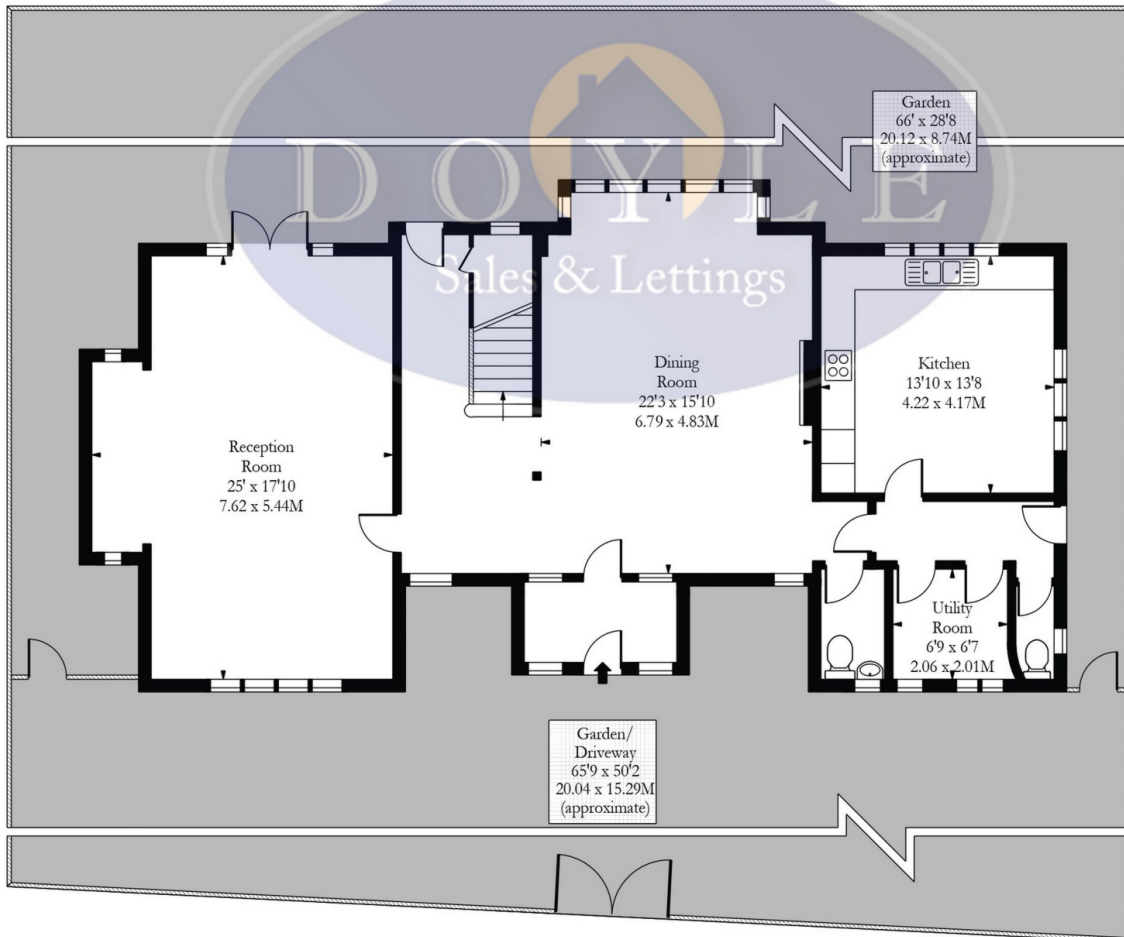
A unique opportunity to acquire a substantial 2,700 sq ft, 6 bedroom detached family home with parking for at least 6 cars. Large solid oak doors welcome you into this period property which comprises entrance porch, dining room, large reception room, spacious kitchen with room for a dining table, utility room and 2 guest toilets. An impressive staircase leads to 4 double bedrooms (2 en suites), 2 single bedrooms (one used as an office, one used as a kitchenette) and a family bathroom. The property further benefits from a lovely mature west facing rear garden with side access from both sides, an abundance of original features and an enviable shingle driveway behind private gates. Dormers Wells Lane is an ideal location for Southall and Hanwell stations (both Crossrail), bus routes, road networks, schools and parks.



Dormer Wells Lane, UB1



First Floor



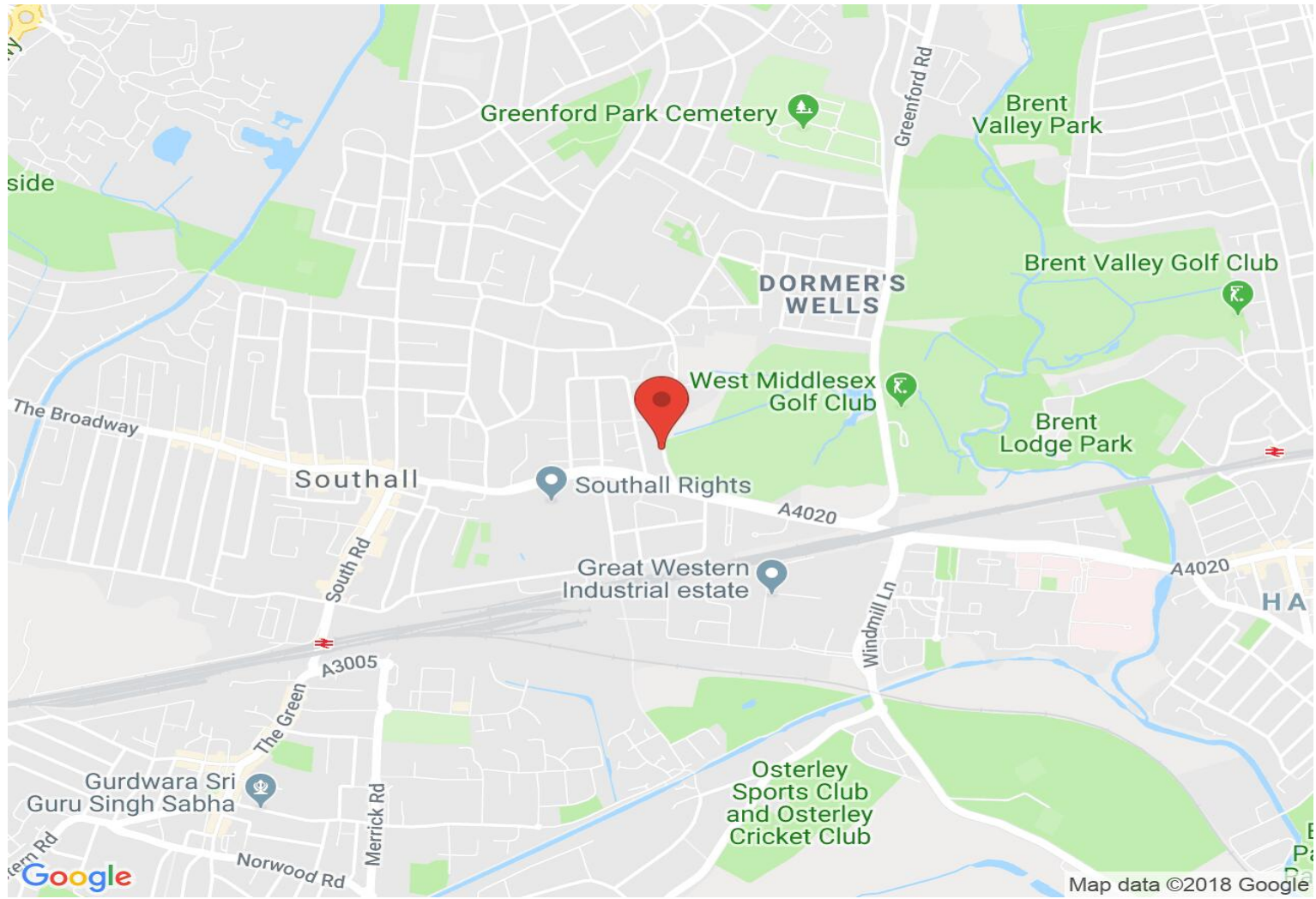
Ground Floor

Approx Gross Internal Area 2702 Sq Ft - 251.02 Sq M

Illustration Purposes Only

Whilst every attempt has been made to ensure the accuracy of the floor plan contained here, measurements of doors, windows, rooms and any other items are approximate and no responsibility is taken for any errors, omissions or mis-statements. The plan is for illustrative purposes only, is not to scale and should be used as such by any prospective purchaser.

Map



VIEWING BY APPOINTMENT WITH AGENTS DOYLE SALES & LETTINGS

11 Broadway Buildings, Boston Rd, Hanwell, London, W7 3TT T: 020 8840 0171 E: info@doylesalesandlettings.co.uk W: www.doylesalesandlettings.co.uk

General: While we endeavour to make our sales particulars fair, accurate and reliable, they are only a general guide to the property and, accordingly, if there is any point which is of particular importance to you, please contact the office and we will be pleased to check the position for you, especially if you are contemplating travelling some distance to view the property.

Measurements: These approximate room sizes are only intended as general guidance. You must verify the dimensions carefully before ordering carpets or any built-in furniture.

Services: Please note we have not tested the services or any of the equipment or appliances in this property, accordingly we strongly advise prospective buyers to commission their own survey or service reports before finalizing their offer to purchase.

THESE PARTICULARS ARE ISSUED IN GOOD FAITH BUT DO NOT CONSTITUTE REPRESENTATIONS OF FACT OR FORM PART OF ANY OFFER OR CONTRACT. THE MATTERS REFERRED TO IN THESE PARTICULARS SHOULD BE INDEPENDENTLY VERIFIED BY PROSPECTIVE BUYERS OR TENANTS. NEITHER DOYLE SALES & LETTINGS NOR ANY OF ITS EMPLOYEES OR AGENTS HAS ANY AUTHORITY TO MAKE OR GIVE ANY REPRESENTATION OR WARRANTY WHATEVER IN RELATION TO THIS PROPERTY.

YOUR HOME IS AT RISK IF YOU DO NOT KEEP UP REPAYMENTS ON A MORTGAGE OR OTHER LOAN SECURED ON IT.

Written quotations available on request. All loans secured on property. Life assurance is usually required.

EPC Rating F

