



£675,000

Mayfield Gardens, Hanwell, W7



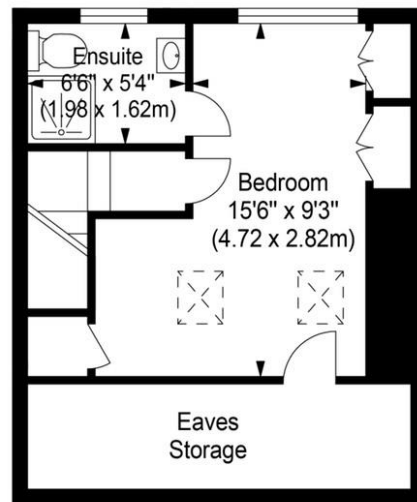
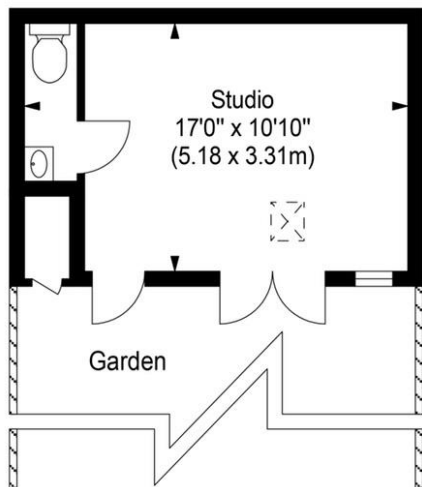
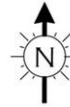
- 4 Bedrooms
- Semi Detached
- Garden Studio
- Full Width Kitchen/Lounge
- 1,564 Sq Ft
- Chain Free

A stunning, 4 bedroom, semi-detached, family home, with off street parking and separate studio. The ground floor comprises storm porch, bay fronted reception, utility room and newly extended 25'10 x 16'5 kitchen/lounge with under floor heating. On the first floor are 2 double bedrooms, single bedroom and family bathroom. The loft conversion boasts a spacious master bedroom with en suite shower room and good storage in the eaves. Outside benefits from off street parking to the front, a private and well maintained rear garden with side access and large studio with power and WC. Mayfield Gardens is conveniently located for Hanwell (Crossrail) and Castlebar stations, excellent schools, bus routes, road networks, good parks and local shops. This property is almost 1,600 sq ft and is offered chain free.

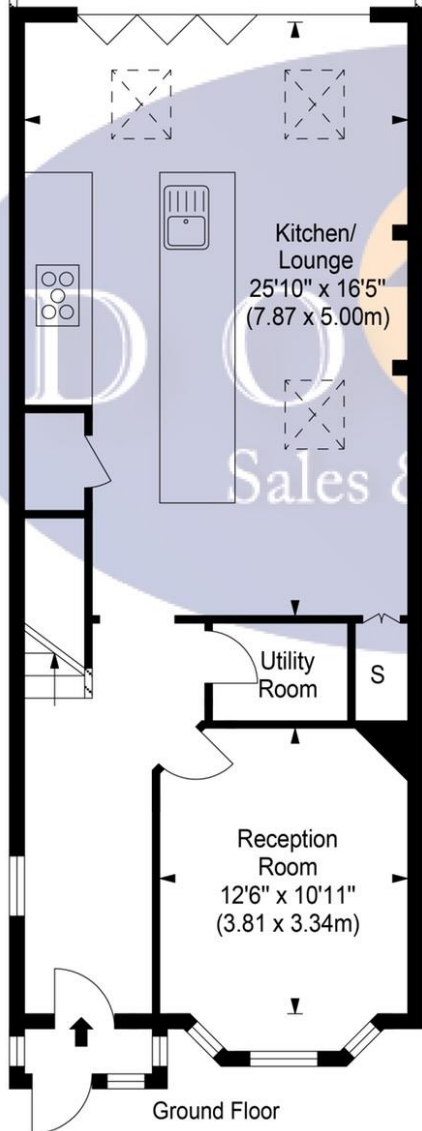


Mayfield Gardens, Hanwell, W7 3 RD

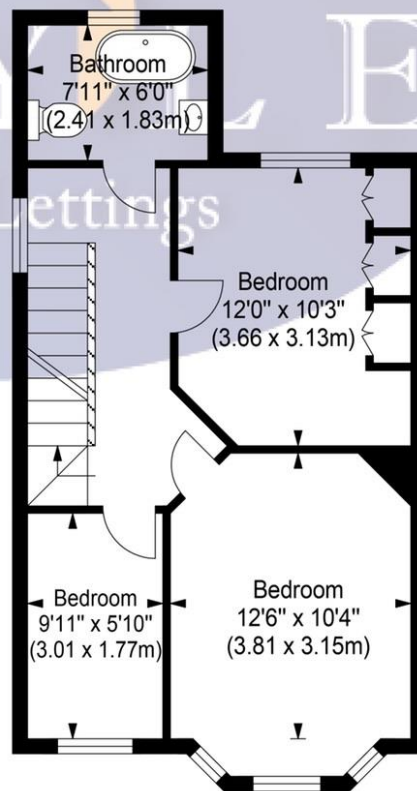
Approx. Gross Internal Area 1564 sq ft - 145.62 sq m
(Included Eaves Storage)



Second Floor



Ground Floor



First Floor

Ref

Copyright THEBLUEPLAN

Disclaimer : Floor plan measurements are approximate and are for illustrative purposes only. While we do not doubt the floor plan accuracy and completeness, you or your advisors should conduct a careful, independent investigation of the property in respect of monetary valuation.

Map



VIEWING BY APPOINTMENT WITH AGENTS DOYLE SALES & LETTINGS

11 Broadway Buildings, Boston Rd, Hanwell, London, W7 3TT T: 020 8840 0171 E: info@doylesalesandlettings.co.uk W: www.doylesalesandlettings.co.uk

General: While we endeavour to make our sales particulars fair, accurate and reliable, they are only a general guide to the property and, accordingly, if there is any point which is of particular importance to you, please contact the office and we will be pleased to check the position for you, especially if you are contemplating travelling some distance to view the property.

Measurements: These approximate room sizes are only intended as general guidance. You must verify the dimensions carefully before ordering carpets or any built-in furniture.

Services: Please note we have not tested the services or any of the equipment or appliances in this property, accordingly we strongly advise prospective buyers to commission their own survey or service reports before finalizing their offer to purchase.

THESE PARTICULARS ARE ISSUED IN GOOD FAITH BUT DO NOT CONSTITUTE REPRESENTATIONS OF FACT OR FORM PART OF ANY OFFER OR CONTRACT. THE MATTERS REFERRED TO IN THESE PARTICULARS SHOULD BE INDEPENDENTLY VERIFIED BY PROSPECTIVE BUYERS OR TENANTS. NEITHER DOYLE SALES & LETTINGS NOR ANY OF ITS EMPLOYEES OR AGENTS HAS ANY AUTHORITY TO MAKE OR GIVE ANY REPRESENTATION OR WARRANTY WHATEVER IN RELATION TO THIS PROPERTY.

YOUR HOME IS AT RISK IF YOU DO NOT KEEP UP REPAYMENTS ON A MORTGAGE OR OTHER LOAN SECURED ON IT.

Written quotations available on request. All loans secured on property. Life assurance is usually required.

EPC Rating D

