



Asking price of £2,400 per month Seasons Close, Hanwell, W7



- Four Double Bedroom House
- Three Bathrooms
- Reception
- Semi Open Plan Fitted Kitchen
- Excellent Location
- Four Double Bedrooms
- Good Sized Patio Garden
- Off Street Secure Gated Parking
- Offered Unfurnished/Flexible

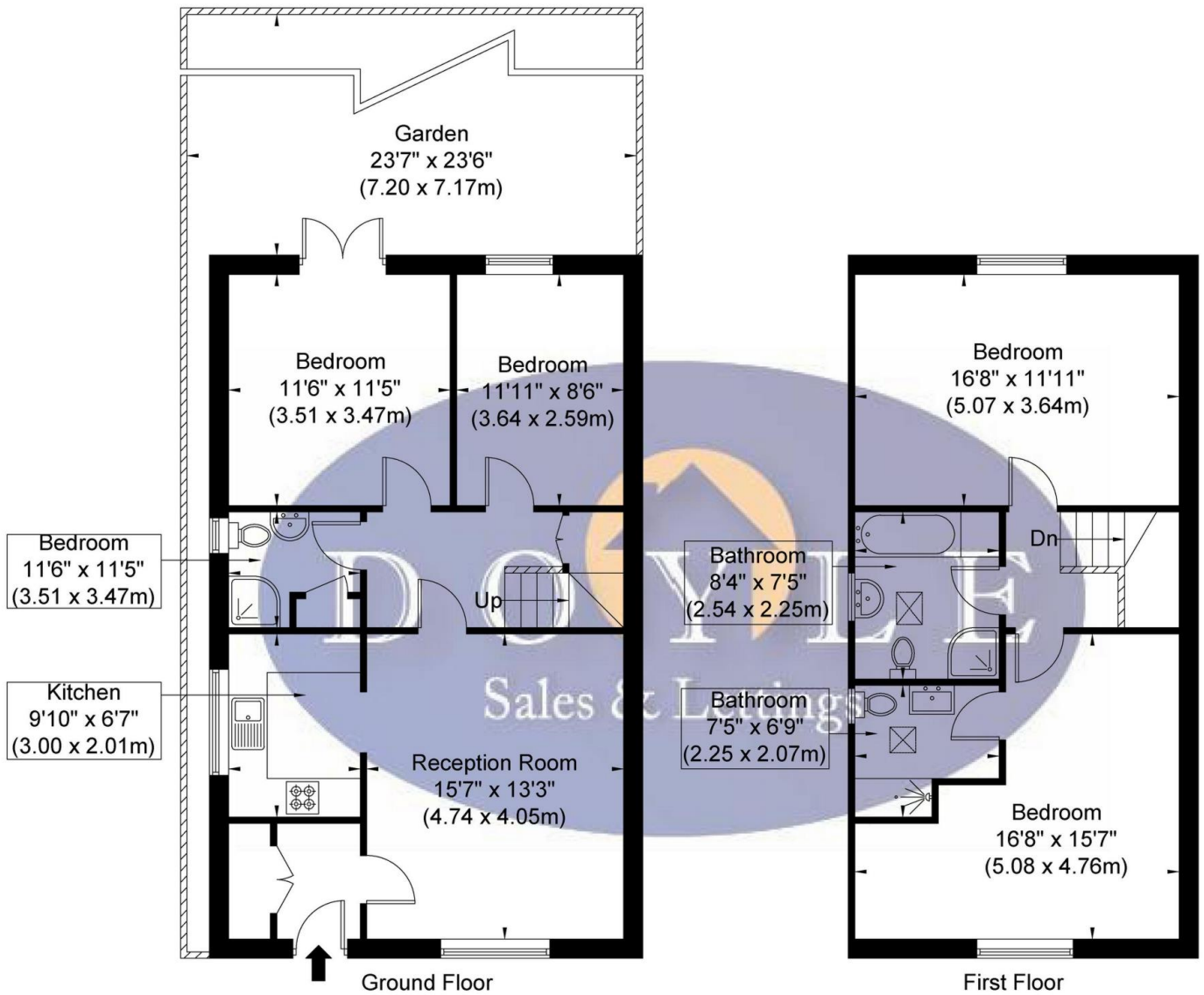
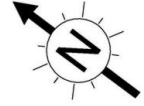
A newly refurbished four bedroom house with three bathrooms set in this secure gated development. The property consists of a reception, a semi-open plan fully fitted modern kitchen with dishwasher, washing machine & condensing drier, four double bedrooms, three with new carpets, one with new wood flooring, two modern shower rooms, one of which is en-suite, one family bathroom with bath and separate shower and a good sized low maintenance rear garden. The property further benefits from gated, off street allocated parking for 1 car and is ideally situated for both Boston Manor (Piccadilly Line) & Hanwell Main Line stations. It is also located within easy access of the shops and amenities of West Ealing/Ealing and also to the A4/M4. The property also falls in the catchment area for both St Marks & Oakland's Primary Schools & Elthorne Park High Secondary School. Offered unfurnished/flexible and available now.





Seasons Close, Hanwell, London W7 3SW

Approx. Gross Internal Area = 1246 sq ft / 115.8 sq m



Ref

Copyright THE **BLÉU** PLAN

Disclaimer : Floor plan measurements are approximate and are for illustrative purposes only
While we do not doubt the floor plan accuracy and completeness, you or your advisors should
conduct a careful, independent investigation of the property in respect of monetary valuation

Directions

Location



VIEWING BY APPOINTMENT WITH AGENTS DOYLE SALES & LETTINGS

11 Broadway Buildings, Boston Rd, Hanwell, London, W7 3TT T: 020 8840 0171 E: info@doylesalesandlettings.co.uk W: www.doylesalesandlettings.co.uk

General: While we endeavour to make our sales particulars fair, accurate and reliable, they are only a general guide to the property and, accordingly, if there is any point which is of particular importance to you, please contact the office and we will be pleased to check the position for you, especially if you are contemplating travelling some distance to view the property.

Measurements: These approximate room sizes are only intended as general guidance. You must verify the dimensions carefully before ordering carpets or any built-in furniture.

Services: Please note we have not tested the services or any of the equipment or appliances in this property, accordingly we strongly advise prospective buyers to commission their own survey or service reports before finalizing their offer to purchase.

THESE PARTICULARS ARE ISSUED IN GOOD FAITH BUT DO NOT CONSTITUTE REPRESENTATIONS OF FACT OR FORM PART OF ANY OFFER OR CONTRACT. THE MATTERS REFERRED TO IN THESE PARTICULARS SHOULD BE INDEPENDENTLY VERIFIED BY PROSPECTIVE BUYERS OR TENANTS. NEITHER DOYLE SALES & LETTINGS NOR ANY OF ITS EMPLOYEES OR AGENTS HAS ANY AUTHORITY TO MAKE OR GIVE ANY REPRESENTATION OR WARRANTY WHATEVER IN RELATION TO THIS PROPERTY.

YOUR HOME IS AT RISK IF YOU DO NOT KEEP UP REPAYMENTS ON A MORTGAGE OR OTHER LOAN SECURED ON IT.

Written quotations available on request. All loans secured on property. Life assurance is usually required.

EPC Rating C

