



**£760,000**

**Westfield Road, Ealing, W13**



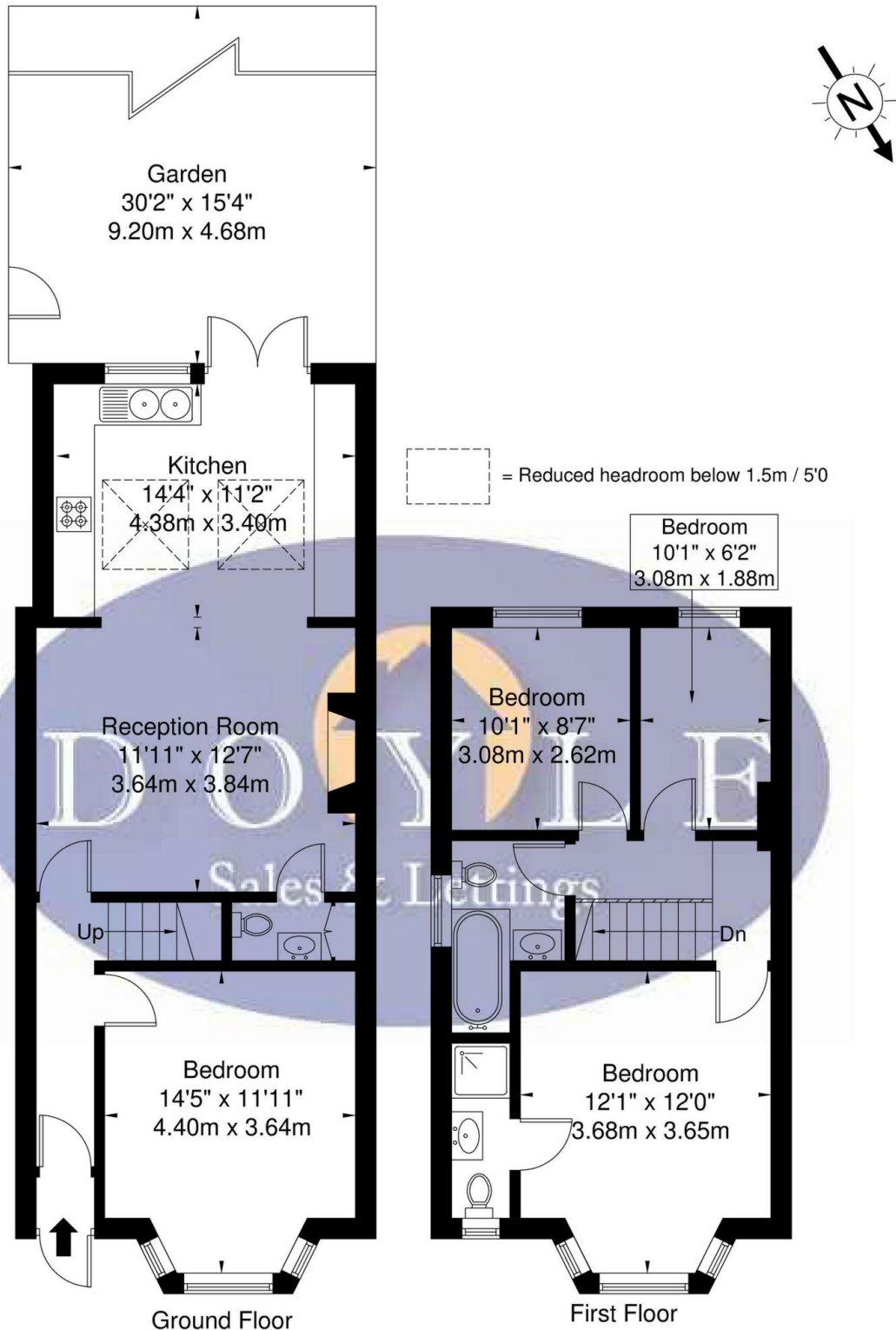
- 3 Bedrooms
- End Of Terrace
- Side Access
- Opportunity To Extend
- Extended Kitchen/Diner
- Chain Free

An attractive chain free 3 bedroom extended Edwardian end of terrace family home in a popular area of West Ealing. The accommodation which is well presented comprises entrance hallway, front reception, dining room, full width extended kitchen/diner and guest WC. The first floor hosts 2 double bedrooms (master en suite), single bedroom and family bathroom. Benefits include chain free, an opportunity to extend into the loft or add a garage (STPP) and front and rear gardens the latter West facing with rear access. Westfield Road is conveniently located for West Ealing (Crossrail 0.4m) and Northfields (Piccadilly line 0.7m) stations, Ealing Broadway, excellent school catchment, shopping facilities, local parks and bus and road networks.



# Westfield Rd W13 9JP

Approx. Gross Internal Area = 98.7 sq m / 1068 sq ft



Ref

Copyright

**BLEU  
PLAN**

Disclaimer : Floor plan measurements are approximate and are for illustrative purposes only. While we do not doubt the floor plan accuracy and completeness, you or your advisors should conduct a careful, independent investigation of the property in respect of monetary valuation.

## Map



### VIEWING BY APPOINTMENT WITH AGENTS DOYLE SALES & LETTINGS

11 Broadway Buildings, Boston Rd, Hanwell, London, W7 3TT T: 020 8840 0171 E: [info@doylesalesandlettings.co.uk](mailto:info@doylesalesandlettings.co.uk) W: [www.doylesalesandlettings.co.uk](http://www.doylesalesandlettings.co.uk)

General: While we endeavour to make our sales particulars fair, accurate and reliable, they are only a general guide to the property and, accordingly, if there is any point which is of particular importance to you, please contact the office and we will be pleased to check the position for you, especially if you are contemplating travelling some distance to view the property.

Measurements: These approximate room sizes are only intended as general guidance. You must verify the dimensions carefully before ordering carpets or any built-in furniture.

Services: Please note we have not tested the services or any of the equipment or appliances in this property, accordingly we strongly advise prospective buyers to commission their own survey or service reports before finalizing their offer to purchase.

THESE PARTICULARS ARE ISSUED IN GOOD FAITH BUT DO NOT CONSTITUTE REPRESENTATIONS OF FACT OR FORM PART OF ANY OFFER OR CONTRACT. THE MATTERS REFERRED TO IN THESE PARTICULARS SHOULD BE INDEPENDENTLY VERIFIED BY PROSPECTIVE BUYERS OR TENANTS. NEITHER DOYLE SALES & LETTINGS NOR ANY OF ITS EMPLOYEES OR AGENTS HAS ANY AUTHORITY TO MAKE OR GIVE ANY REPRESENTATION OR WARRANTY WHATEVER IN RELATION TO THIS PROPERTY.

YOUR HOME IS AT RISK IF YOU DO NOT KEEP UP REPAYMENTS ON A MORTGAGE OR OTHER LOAN SECURED ON IT.

Written quotations available on request. All loans secured on property. Life assurance is usually required.

## EPC Rating D

