



£899,950

Lawn Gardens, Hanwell, W7




- 4 Bedrooms
- Excellent Condition
- Fully Extended Kitchen
- Almost 1,500 Sq Ft
- South Facing Garden
- Close To Elizabeth Line

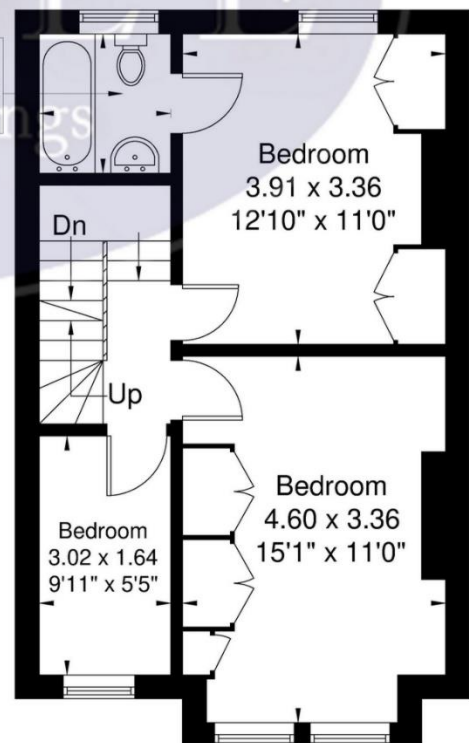
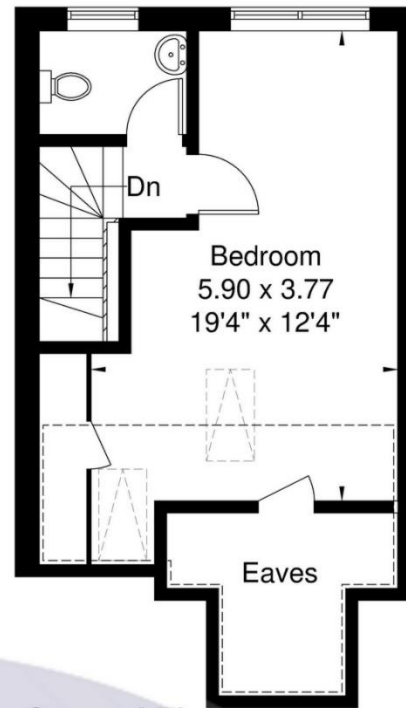
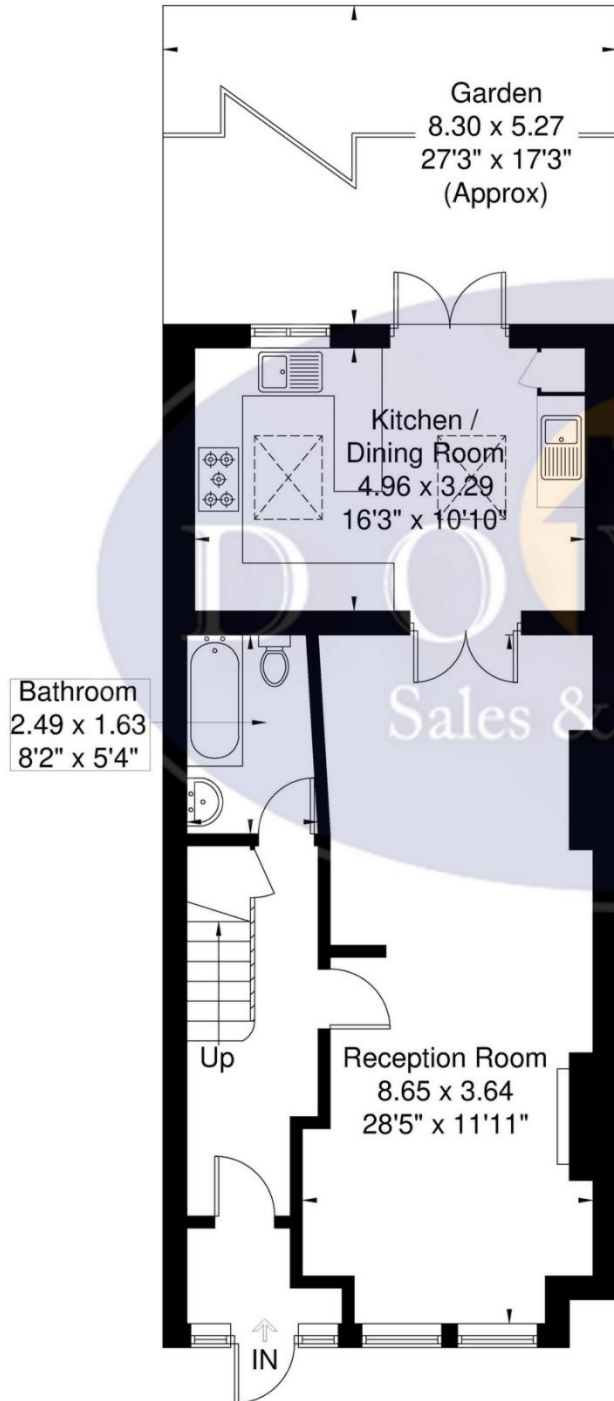
An attractive and elegant, 4 bedroom, halls adjoining, period property in Hanwell Village close to the Elizabeth line. This property has been extended into the loft and a full width kitchen extension to the rear which has created a fantastic family home. The ground floor accommodation comprises storm porch, wide entrance hallway, double reception, family bathroom and stunning newly fitted kitchen with breakfast bar, ample storage and access to a well kept south facing garden, with shed and rear access. The first floor comprises 2 double bedrooms, single bedroom and family bathroom. The loft conversion hosts a spacious bedroom with WC and good storage. Lawn Gardens is perfectly located for Hanwell (Elizabeth line / Crossrail) and Boston Manor (Piccadilly line) stations, excellent schools, parks, shops, bus routes and road networks.



Lawn Gardens W7 3JN

Approximate Gross Internal Area = 126.2 sq m / 1358 sq ft
 Eaves Storage / Reduced Headroom = 10.9 sq m / 117 sq ft
 Total = 137.1 sq m / 1475 sq ft

 = Reduced headroom below 1.5m / 5'0"



Although every attempt has been made to ensure accuracy, all measurements are approximate.
 The floorplan is for illustrative purposes only and not to scale.
 © www.perspective.co.uk

Map



VIEWING BY APPOINTMENT WITH AGENTS DOYLE SALES & LETTINGS

11 Broadway Buildings, Boston Rd, Hanwell, London, W7 3TT T: 020 8840 0171 E: info@doylesalesandlettings.co.uk W: www.doylesalesandlettings.co.uk

General: While we endeavour to make our sales particulars fair, accurate and reliable, they are only a general guide to the property and, accordingly, if there is any point which is of particular importance to you, please contact the office and we will be pleased to check the position for you, especially if you are contemplating travelling some distance to view the property.

Measurements: These approximate room sizes are only intended as general guidance. You must verify the dimensions carefully before ordering carpets or any built-in furniture.

Services: Please note we have not tested the services or any of the equipment or appliances in this property, accordingly we strongly advise prospective buyers to commission their own survey or service reports before finalizing their offer to purchase.

THESE PARTICULARS ARE ISSUED IN GOOD FAITH BUT DO NOT CONSTITUTE REPRESENTATIONS OF FACT OR FORM PART OF ANY OFFER OR CONTRACT. THE MATTERS REFERRED TO IN THESE PARTICULARS SHOULD BE INDEPENDENTLY VERIFIED BY PROSPECTIVE BUYERS OR TENANTS. NEITHER DOYLE SALES & LETTINGS NOR ANY OF ITS EMPLOYEES OR AGENTS HAS ANY AUTHORITY TO MAKE OR GIVE ANY REPRESENTATION OR WARRANTY WHATEVER IN RELATION TO THIS PROPERTY.

YOUR HOME IS AT RISK IF YOU DO NOT KEEP UP REPAYMENTS ON A MORTGAGE OR OTHER LOAN SECURED ON IT.

Written quotations available on request. All loans secured on property. Life assurance is usually required.

EPC Rating C

