



**£700,000**

**Jessamine Road, Hanwell, W7**



- 3 Bedrooms
- Extended Kitchen
- Opportunity To Extend
- Downstairs WC
- Over 1,000 Sq Ft
- Close To Elizabeth Line

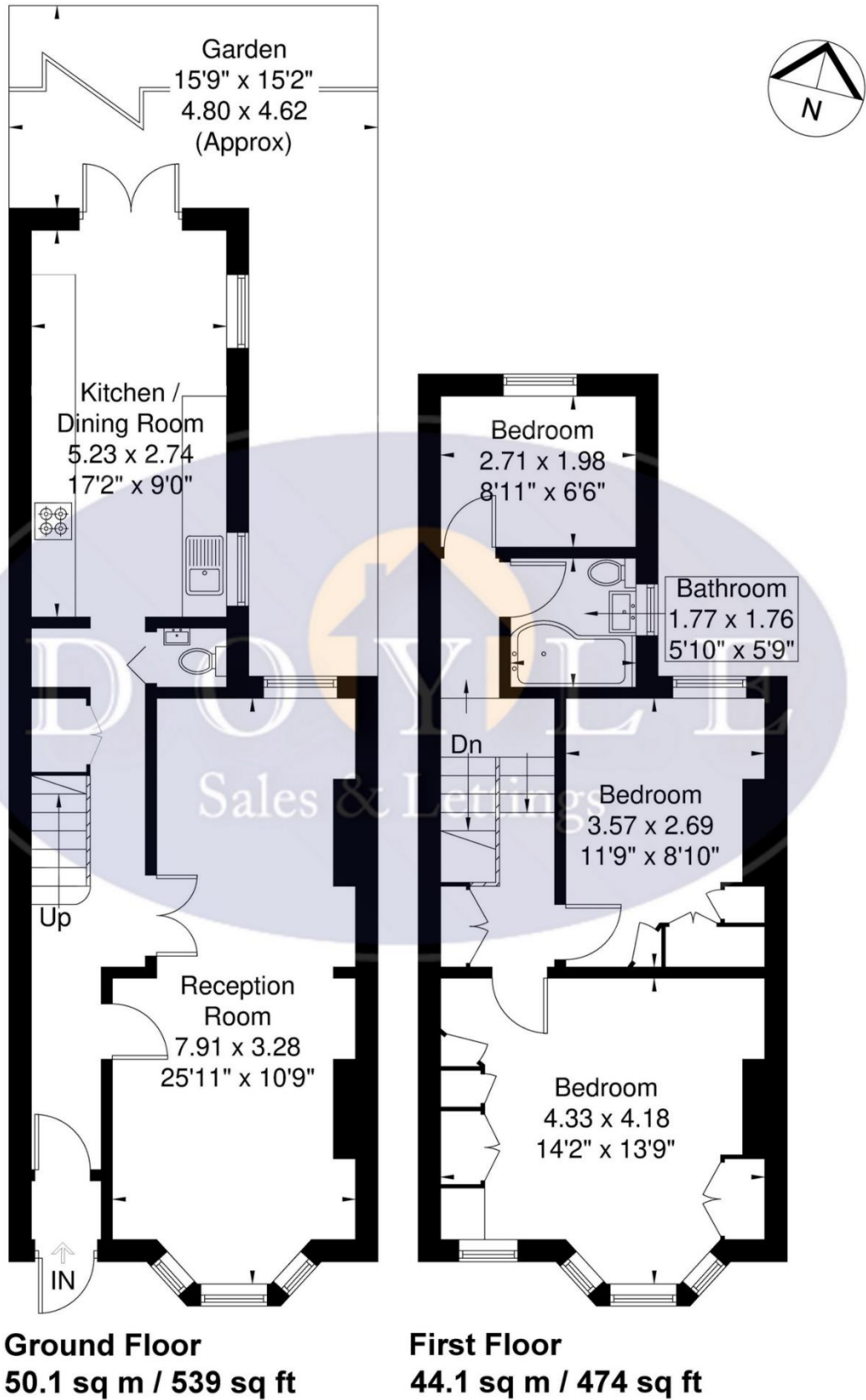
A stunning, extended, 3 bedroom, Edwardian, family home on a quiet cul de sac close to the Elizabeth line. The property, which has been recently refurbished by the current owners and offers an abundance of natural light, comprises entrance hall, spacious bay fronted lounge, dining area, guest WC and stunning extended kitchen / breakfast room with stylish French doors out to the rear garden. On the first floor it offers 2 double bedrooms, single bedroom and family bathroom. Further benefitting from an opportunity to create a dormer loft conversion STPP, front garden and a private easy to maintain rear garden. Jessamine Road is conveniently located for Hanwell station (Elizabeth line / Crossrail), Boston Manor station (Piccadilly), great schools, an array of local shops on Hanwell Broadway, bus routes, road networks, canal and parks.





# Jessamine Road W7 3SQ

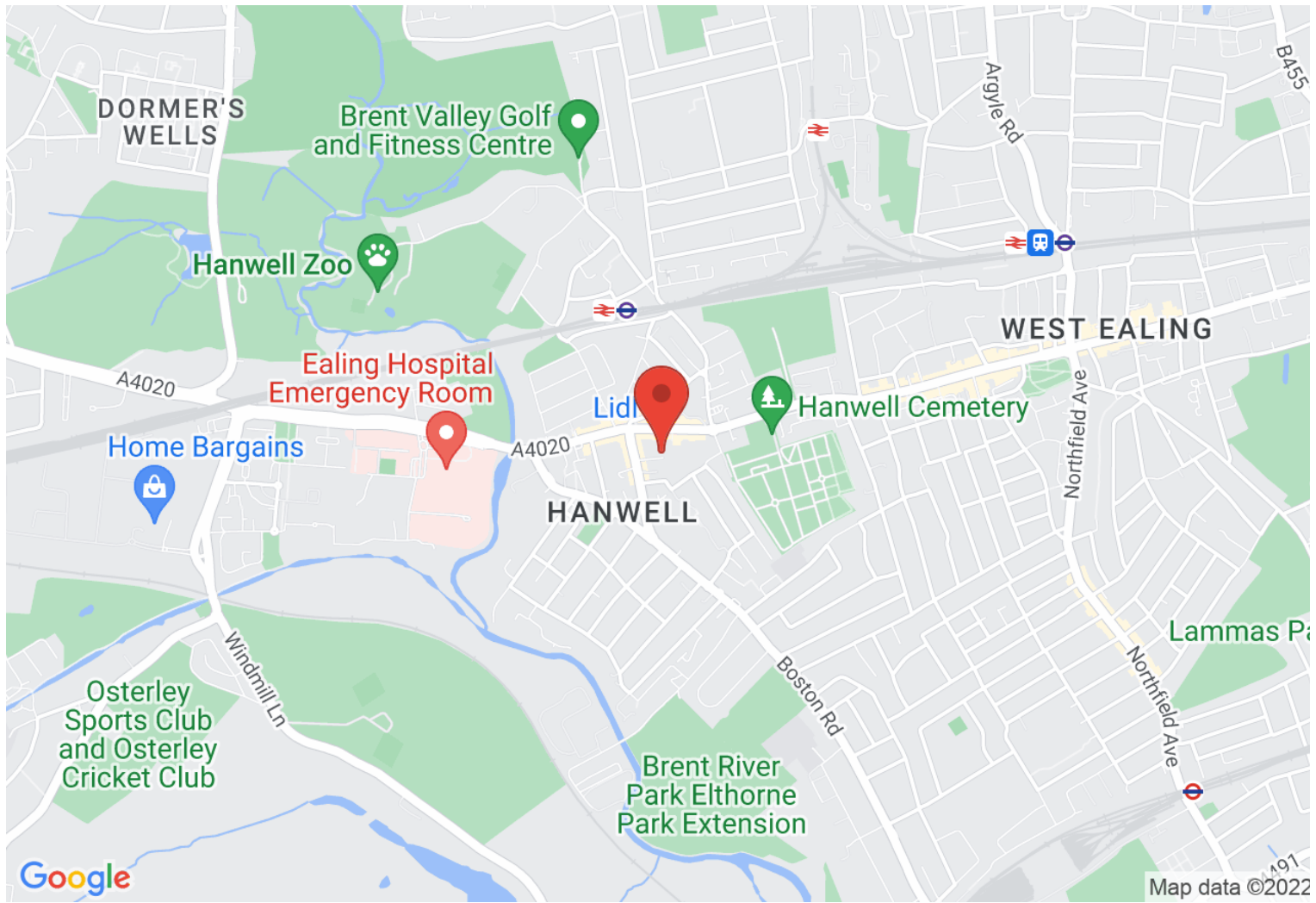
Approximate Gross Internal Area = 94.2 sq m / 1014 sq ft



Although every attempt has been made to ensure accuracy, all measurements are approximate.  
The floorplan is for illustrative purposes only and not to scale.



## Map



### VIEWING BY APPOINTMENT WITH AGENTS DOYLE SALES & LETTINGS

11 Broadway Buildings, Boston Rd, Hanwell, London, W7 3TT T: 020 8840 0171 E: info@doylesalesandlettings.co.uk W: www.doylesalesandlettings.co.uk

General: While we endeavour to make our sales particulars fair, accurate and reliable, they are only a general guide to the property and, accordingly, if there is any point which is of particular importance to you, please contact the office and we will be pleased to check the position for you, especially if you are contemplating travelling some distance to view the property.

Measurements: These approximate room sizes are only intended as general guidance. You must verify the dimensions carefully before ordering carpets or any built-in furniture.

Services: Please note we have not tested the services or any of the equipment or appliances in this property, accordingly we strongly advise prospective buyers to commission their own survey or service reports before finalizing their offer to purchase.

THESE PARTICULARS ARE ISSUED IN GOOD FAITH BUT DO NOT CONSTITUTE REPRESENTATIONS OF FACT OR FORM PART OF ANY OFFER OR CONTRACT. THE MATTERS REFERRED TO IN THESE PARTICULARS SHOULD BE INDEPENDENTLY VERIFIED BY PROSPECTIVE BUYERS OR TENANTS. NEITHER DOYLE SALES & LETTINGS NOR ANY OF ITS EMPLOYEES OR AGENTS HAS ANY AUTHORITY TO MAKE OR GIVE ANY REPRESENTATION OR WARRANTY WHATEVER IN RELATION TO THIS PROPERTY.

YOUR HOME IS AT RISK IF YOU DO NOT KEEP UP REPAYMENTS ON A MORTGAGE OR OTHER LOAN SECURED ON IT.

Written quotations available on request. All loans secured on property. Life assurance is usually required.

## EPC Rating D

