



£375,000

Diamond Court, Cherington Road, Hanwell, W7



- 2 Double Bedrooms
- Off Street Parking
- Communal Garden
- Over 100 Year Lease
- Useful Loft Storage
- Close To Elizabeth Line

An opportunity to purchase a well presented, 2 double bedroom, top floor apartment lift, close to the Elizabeth Line, with long lease, secure parking and communal garden. The accommodation offers fantastic natural light and comprises communal hallway with entry phone system, semi open plan kitchen / lounge, 2 double bedrooms, family bathroom, balcony and valuable loft storage The property falls into popular school catchments such as St Josephs, Hobbayne, Drayton Manor High school and the renowned Andre Malraux French school in Laurie Road. The A40, A4 and M4 are within easy reach, good local amenities on your doorstep, bus routes to Ealing and the popular Bunny Park.

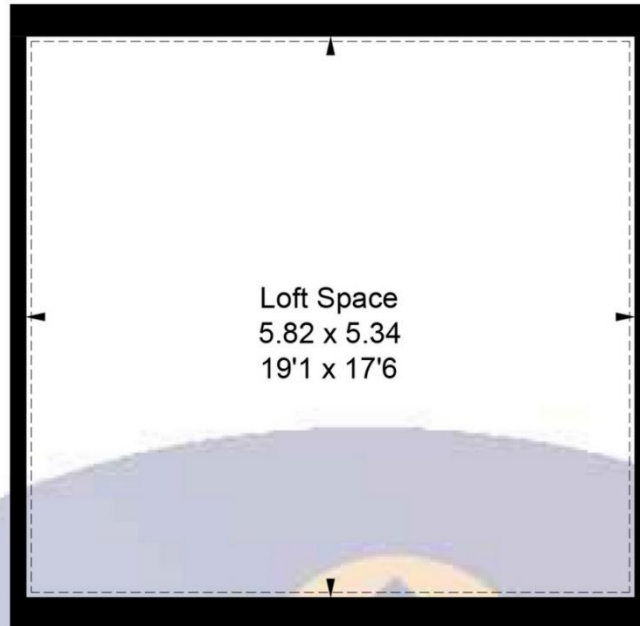


Diamond Court, Cherrington Road, W7 3JL

Approximate Gross Internal Area = 61.16 sq m / 658 sq ft

Loft Space & Reduced Headroom = 31.03 sq m / 334 sq ft

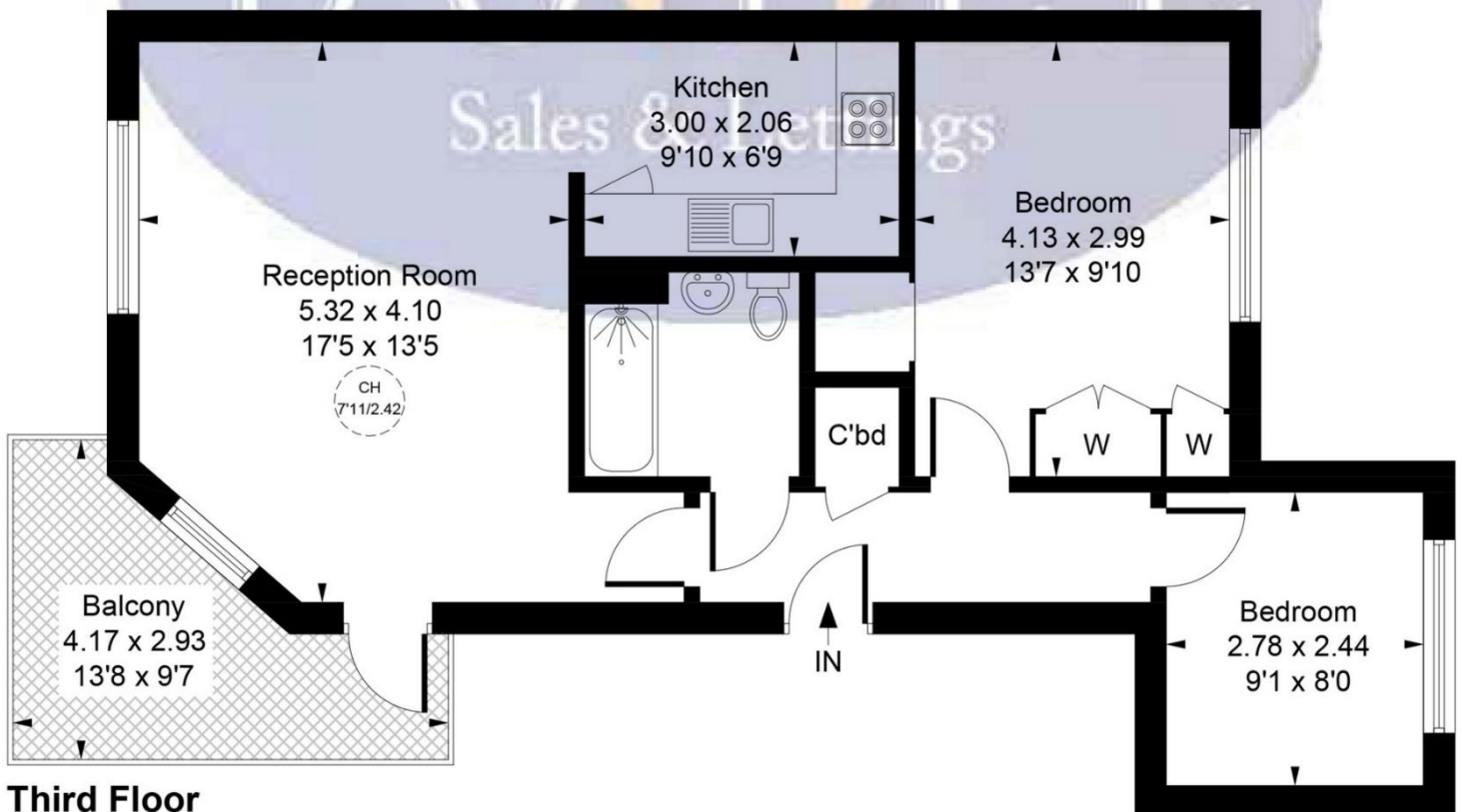
Total = 92.19 sq m / 992 sq ft



Loft Space
31.03 sq m / 334 sq ft
(Including Reduced Headroom)

CH = Ceiling Height

= Reduced headroom
below 1.5m / 5'0



Third Floor
61.16 sq m / 658 sq ft

Whilst every attempt has been made to ensure the accuracy of the floor plan contained here, measurements of doors, windows, rooms and any other items are approximate and no responsibility is taken for any error, omission, or mis-statement.

This plan is for illustrative purposes only and should be used as such by any prospective purchaser.

© Vizion Property Marketing Produces for Doyle Sales & Lettings

Map



VIEWING BY APPOINTMENT WITH AGENTS DOYLE SALES & LETTINGS

11 Broadway Buildings, Boston Rd, Hanwell, London, W7 3TT T: 020 8840 0171 E: info@doylesalesandlettings.co.uk W: www.doylesalesandlettings.co.uk

General: While we endeavour to make our sales particulars fair, accurate and reliable, they are only a general guide to the property and, accordingly, if there is any point which is of particular importance to you, please contact the office and we will be pleased to check the position for you, especially if you are contemplating travelling some distance to view the property.

Measurements: These approximate room sizes are only intended as general guidance. You must verify the dimensions carefully before ordering carpets or any built-in furniture.

Services: Please note we have not tested the services or any of the equipment or appliances in this property, accordingly we strongly advise prospective buyers to commission their own survey or service reports before finalizing their offer to purchase.

THESE PARTICULARS ARE ISSUED IN GOOD FAITH BUT DO NOT CONSTITUTE REPRESENTATIONS OF FACT OR FORM PART OF ANY OFFER OR CONTRACT. THE MATTERS REFERRED TO IN THESE PARTICULARS SHOULD BE INDEPENDENTLY VERIFIED BY PROSPECTIVE BUYERS OR TENANTS. NEITHER DOYLE SALES & LETTINGS NOR ANY OF ITS EMPLOYEES OR AGENTS HAS ANY AUTHORITY TO MAKE OR GIVE ANY REPRESENTATION OR WARRANTY WHATEVER IN RELATION TO THIS PROPERTY.

YOUR HOME IS AT RISK IF YOU DO NOT KEEP UP REPAYMENTS ON A MORTGAGE OR OTHER LOAN SECURED ON IT.

Written quotations available on request. All loans secured on property. Life assurance is usually required.

EPC Rating D

