



£600,000

St Kilda Road, West Ealing, W13



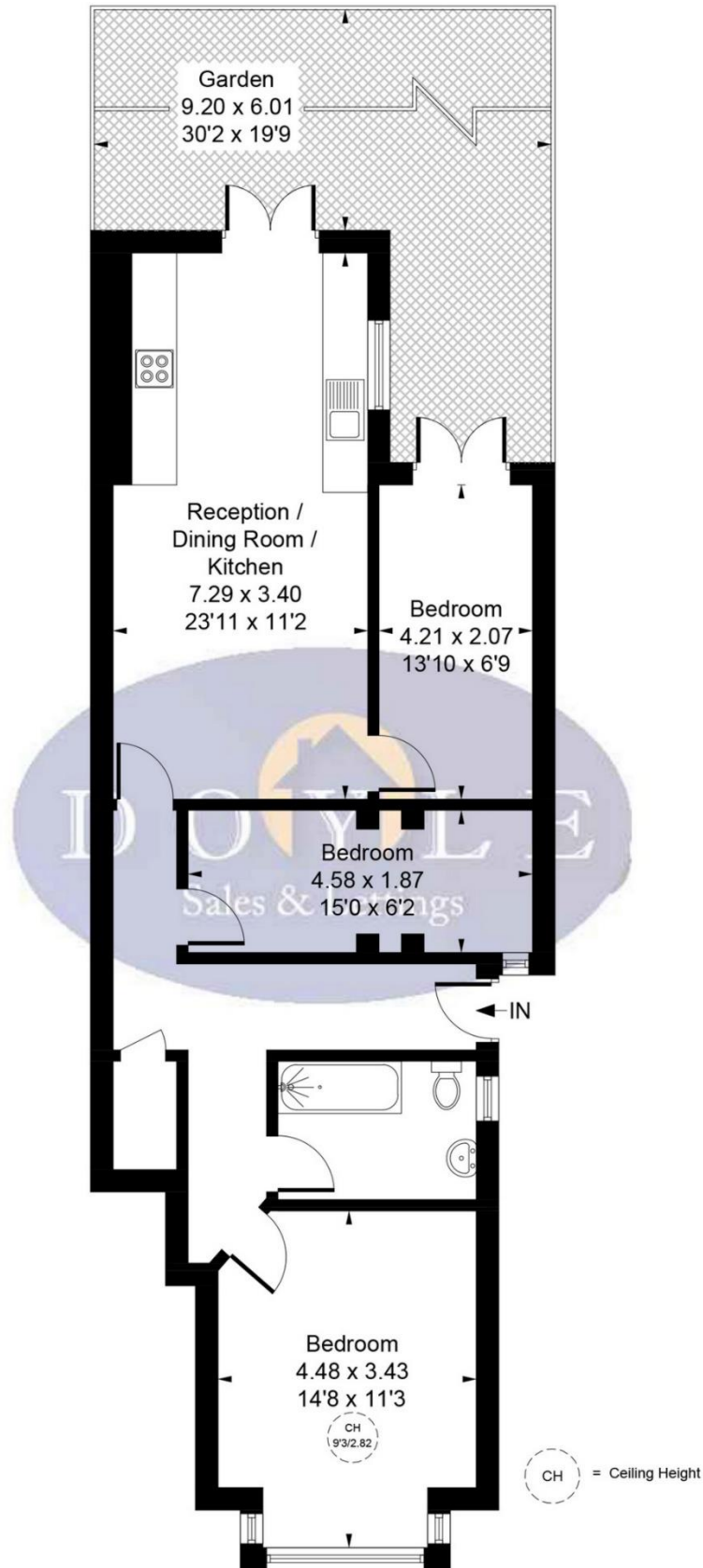
- 3 Bedrooms
- Private Garden
- 823 Sq Ft
- Excellent Location
- New Kitchen & Bathroom
- Chain Free

A rare find is this excellent extended and spacious, 3 bedroom, leasehold garden flat on popular St Kilda Road close to Elizabeth line and Piccadilly line. Offered chain free and finished to a high standard, the property is the entire ground floor of an attractive semi-detached house and comprises own entrance, hall, spacious master bedroom, second double bedroom, newly installed luxury family bathroom, 3rd bedroom with door to garden, stunning new kitchen with direct access to a private garden which is easy to maintain. Situated within a short walk to Northfields (Piccadilly line) and West Ealing (Elizabeth line) stations and perfect for, excellent schools such as Fielding, bus routes, parks, road networks and shopping facilities. * Photos of furniture are CGI



St Kilda Road, London, W13 9DE

Approximate Gross Internal Area
76.44 sq m / 823 sq ft



Ground Floor
76.44 sq m / 823 sq ft

Whilst every attempt has been made to ensure the accuracy of the floor plan contained here, measurements of doors, windows, rooms and any other items are approximate and no responsibility is taken for any error, omission, or mis-statement. This plan is for illustrative purposes only and should be used as such by any prospective purchaser.

© Vizion Property Marketing Produced for Doyle Sales & Lettings

Map



VIEWING BY APPOINTMENT WITH AGENTS DOYLE SALES & LETTINGS

11 Broadway Buildings, Boston Rd, Hanwell, London, W7 3TT T: 020 8840 0171 E: info@doylesalesandlettings.co.uk W: www.doylesalesandlettings.co.uk

General: While we endeavour to make our sales particulars fair, accurate and reliable, they are only a general guide to the property and, accordingly, if there is any point which is of particular importance to you, please contact the office and we will be pleased to check the position for you, especially if you are contemplating travelling some distance to view the property.

Measurements: These approximate room sizes are only intended as general guidance. You must verify the dimensions carefully before ordering carpets or any built-in furniture.

Services: Please note we have not tested the services or any of the equipment or appliances in this property, accordingly we strongly advise prospective buyers to commission their own survey or service reports before finalizing their offer to purchase.

THESE PARTICULARS ARE ISSUED IN GOOD FAITH BUT DO NOT CONSTITUTE REPRESENTATIONS OF FACT OR FORM PART OF ANY OFFER OR CONTRACT. THE MATTERS REFERRED TO IN THESE PARTICULARS SHOULD BE INDEPENDENTLY VERIFIED BY PROSPECTIVE BUYERS OR TENANTS. NEITHER DOYLE SALES & LETTINGS NOR ANY OF ITS EMPLOYEES OR AGENTS HAS ANY AUTHORITY TO MAKE OR GIVE ANY REPRESENTATION OR WARRANTY WHATEVER IN RELATION TO THIS PROPERTY.

YOUR HOME IS AT RISK IF YOU DO NOT KEEP UP REPAYMENTS ON A MORTGAGE OR OTHER LOAN SECURED ON IT.

Written quotations available on request. All loans secured on property. Life assurance is usually required.

EPC Rating

