



£650,000

Greenford Avenue, Hanwell, W7



- 3 Bedrooms
- 1,115 Sq Ft
- Opportunity To Extend
- Potential For Parking STPP
- Over 50 Ft Private Garden
- Chain Free

An attractive and classic brick fronted, 3 bedroom, Victorian, family home, offered chain free, with potential for off street parking close to the Elizabeth line. This spacious family home benefits from new carpets and comprises bay fronted reception room, second reception room, family bathroom, eat in kitchen / diner and utility area. On the first floor there are 3 bedrooms and shower room. There is an opportunity to extend the house both to the ground and into the loft space to create more living space and add value. Further benefits include over 50 ft private rear garden and hard standing front garden with potential for off street parking STPP. This property falls into an outstanding school catchment, perfect for bus routes, road networks, Bunny Park, local shops and a short stroll to Hanwell station (Elizabeth line). * Photos of furniture are CGI



Greenford Avenue, London, W7 1HA

Approximate Gross Internal Area = 103.34 sq m / 1112 sq ft

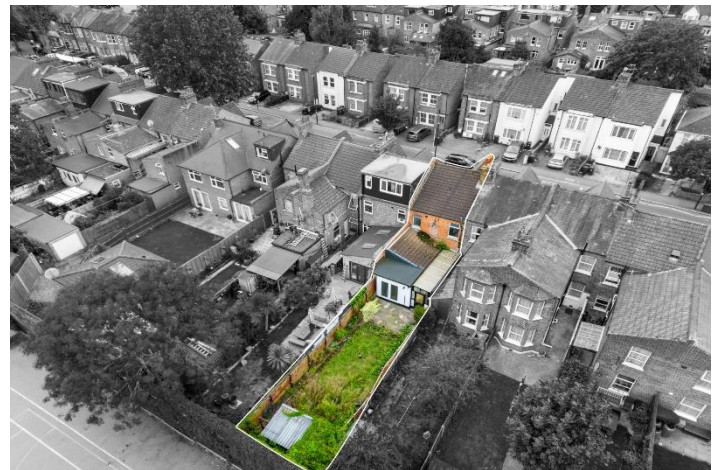
Reduced Headroom = 0.25 sq m / 3 sq ft

Total = 103.59 sq m / 1115 sq ft



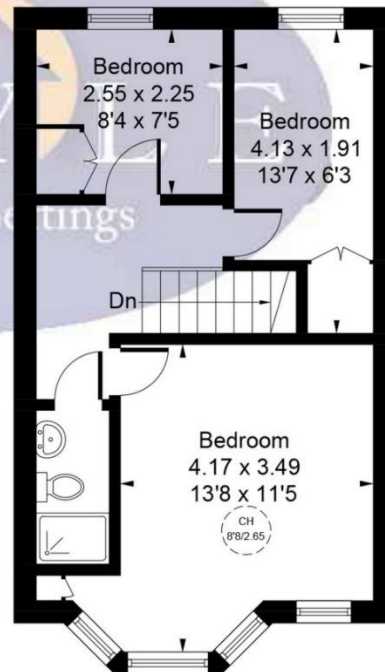
Ground Floor
66.13 sq m / 712 sq ft

Reduced Headroom
0.25 sq m / 3 sq ft



CH = Ceiling Height

— = Reduced headroom below 1.5m / 5'0



First Floor
37.21 sq m / 400 sq ft

Whilst every attempt has been made to ensure the accuracy of the floor plan contained here, measurements of doors, windows, rooms and any other items are approximate and no responsibility is taken for any error, omission, or mis-statement.

This plan is for illustrative purposes only and should be used as such by any prospective purchaser.

© Vizion Property Marketing Produced for Doyle Sales & Lettings

Map



VIEWING BY APPOINTMENT WITH AGENTS DOYLE SALES & LETTINGS

11 Broadway Buildings, Boston Rd, Hanwell, London, W7 3TT T: 020 8840 0171 E: info@doylesalesandlettings.co.uk W: www.doylesalesandlettings.co.uk

General: While we endeavour to make our sales particulars fair, accurate and reliable, they are only a general guide to the property and, accordingly, if there is any point which is of particular importance to you, please contact the office and we will be pleased to check the position for you, especially if you are contemplating travelling some distance to view the property.

Measurements: These approximate room sizes are only intended as general guidance. You must verify the dimensions carefully before ordering carpets or any built-in furniture.

Services: Please note we have not tested the services or any of the equipment or appliances in this property, accordingly we strongly advise prospective buyers to commission their own survey or service reports before finalizing their offer to purchase.

THESE PARTICULARS ARE ISSUED IN GOOD FAITH BUT DO NOT CONSTITUTE REPRESENTATIONS OF FACT OR FORM PART OF ANY OFFER OR CONTRACT. THE MATTERS REFERRED TO IN THESE PARTICULARS SHOULD BE INDEPENDENTLY VERIFIED BY PROSPECTIVE BUYERS OR TENANTS. NEITHER DOYLE SALES & LETTINGS NOR ANY OF ITS EMPLOYEES OR AGENTS HAS ANY AUTHORITY TO MAKE OR GIVE ANY REPRESENTATION OR WARRANTY WHATEVER IN RELATION TO THIS PROPERTY.

YOUR HOME IS AT RISK IF YOU DO NOT KEEP UP REPAYMENTS ON A MORTGAGE OR OTHER LOAN SECURED ON IT.

Written quotations available on request. All loans secured on property. Life assurance is usually required.

EPC Rating D

