



£450,000

Drayton Bridge Road, Hanwell, W7



- 2 Double Bedrooms
- Over 2 Levels

- Excellent Condition
- Ample Storage

- Almost 900 Sq Ft
- Close To Elizabeth Line

A beautifully presented, 2 double bedroom apartment, arranged over 2 floors close to the Elizabeth line. Benefitting from a long lease and in stunning condition throughout, the property comprises stairs to the first floor, spacious bay fronted lounge, separate kitchen, double bedroom, family bathroom and second double bedroom with ample storage in the loft. Drayton Bridge Road is perfectly located for Hanwell station (Elizabeth line), Drayton Green station (GWR), great schools, parks, local shops, bus routes and road networks.

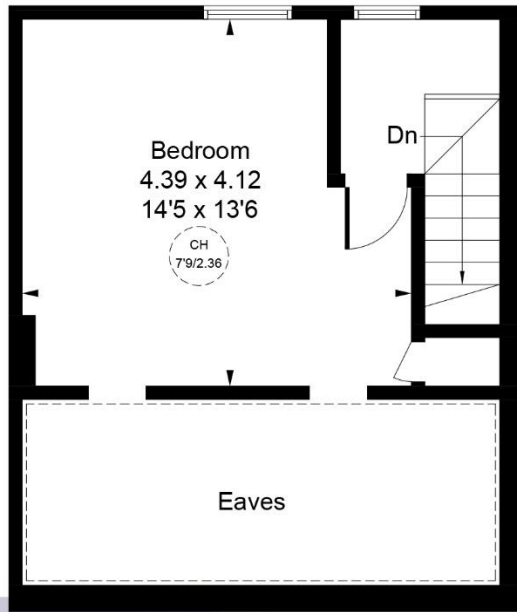


Drayton Bridge Road, London, W7 1EP

Approximate Gross Internal Area = 70.84 sq m / 763 sq ft

Reduced Headroom & Eaves = 12.15 sq m / 131 sq ft

Total = 82.99 sq m / 894 sq ft



Second Floor

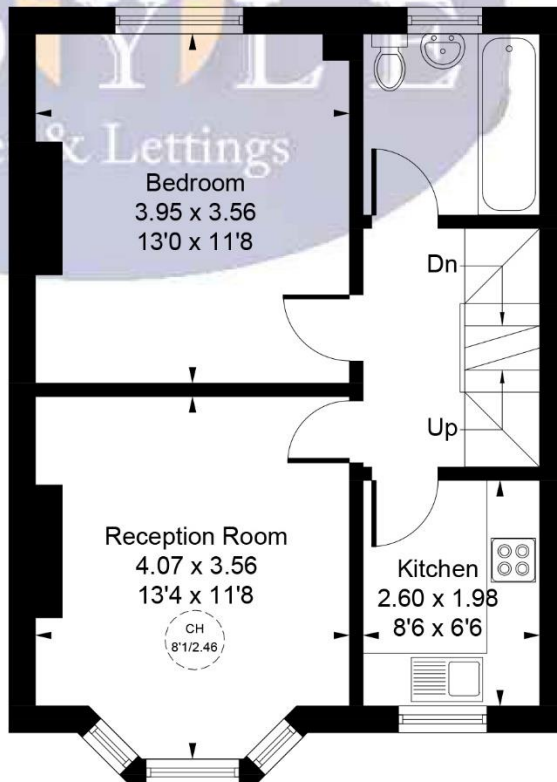
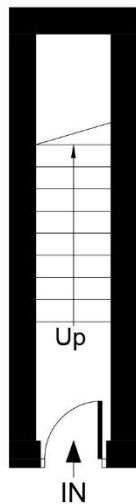
22.41 sq m / 241 sq ft

Reduced Headroom & Eaves

12.15 sq m / 131 sq ft

CH = Ceiling Height

= Reduced headroom below 1.5m / 5'0



Ground Floor

4.06 sq m / 44 sq ft

First Floor

44.37 sq m / 478 sq ft

Whilst every attempt has been made to ensure the accuracy of the floor plan contained here, measurements of doors, windows, rooms and any other items are approximate and no responsibility is taken for any error, omission, or mis-statement.

This plan is for illustrative purposes only and should be used as such by any prospective purchaser.

© Vizion Property Marketing Produced for Doyle Sales & Lettings

Map



VIEWING BY APPOINTMENT WITH AGENTS DOYLE SALES & LETTINGS

11 Broadway Buildings, Boston Rd, Hanwell, London, W7 3TT T: 020 8840 0171 E: info@doylesalesandlettings.co.uk W: www.doylesalesandlettings.co.uk

General: While we endeavour to make our sales particulars fair, accurate and reliable, they are only a general guide to the property and, accordingly, if there is any point which is of particular importance to you, please contact the office and we will be pleased to check the position for you, especially if you are contemplating travelling some distance to view the property.

Measurements: These approximate room sizes are only intended as general guidance. You must verify the dimensions carefully before ordering carpets or any built-in furniture.

Services: Please note we have not tested the services or any of the equipment or appliances in this property, accordingly we strongly advise prospective buyers to commission their own survey or service reports before finalizing their offer to purchase.

THESE PARTICULARS ARE ISSUED IN GOOD FAITH BUT DO NOT CONSTITUTE REPRESENTATIONS OF FACT OR FORM PART OF ANY OFFER OR CONTRACT. THE MATTERS REFERRED TO IN THESE PARTICULARS SHOULD BE INDEPENDENTLY VERIFIED BY PROSPECTIVE BUYERS OR TENANTS. NEITHER DOYLE SALES & LETTINGS NOR ANY OF ITS EMPLOYEES OR AGENTS HAS ANY AUTHORITY TO MAKE OR GIVE ANY REPRESENTATION OR WARRANTY WHATEVER IN RELATION TO THIS PROPERTY.

YOUR HOME IS AT RISK IF YOU DO NOT KEEP UP REPAYMENTS ON A MORTGAGE OR OTHER LOAN SECURED ON IT.

Written quotations available on request. All loans secured on property. Life assurance is usually required.

EPC Rating D

