



£299,950

Clare House, Uxbridge Road, Hanwell, W7



- One Double Bedroom
- Ground Floor
- 574 Sq Ft
- Secure Gated Parking
- Long Lease & Chain Free
- Excellent Transport Links

An impressive, chain free, light and spacious double bedroom, ground floor apartment with gated off-street parking, ideally located near Hanwell station. The property is in excellent condition, having been upgraded and well-maintained by the current owner, with ample in-built storage for each room, an entry phone system and high-quality flooring. It has a large reception room with space for a dining table, a separate kitchen, and a double bedroom that is light and airy with fitted wardrobes. The property also has gas central heating and double glazed windows throughout.

Further benefits include a long lease with no ground rent and a communal garden. Clare House is a perfect location for West Ealing and Hanwell stations (for excellent cross-London links via the Elizabeth line), with close bus routes and road networks. It is located near Hanwell Broadway and Ealing Broadway, so shops, amenities, cafes, restaurants, and green open spaces are within walking distance.

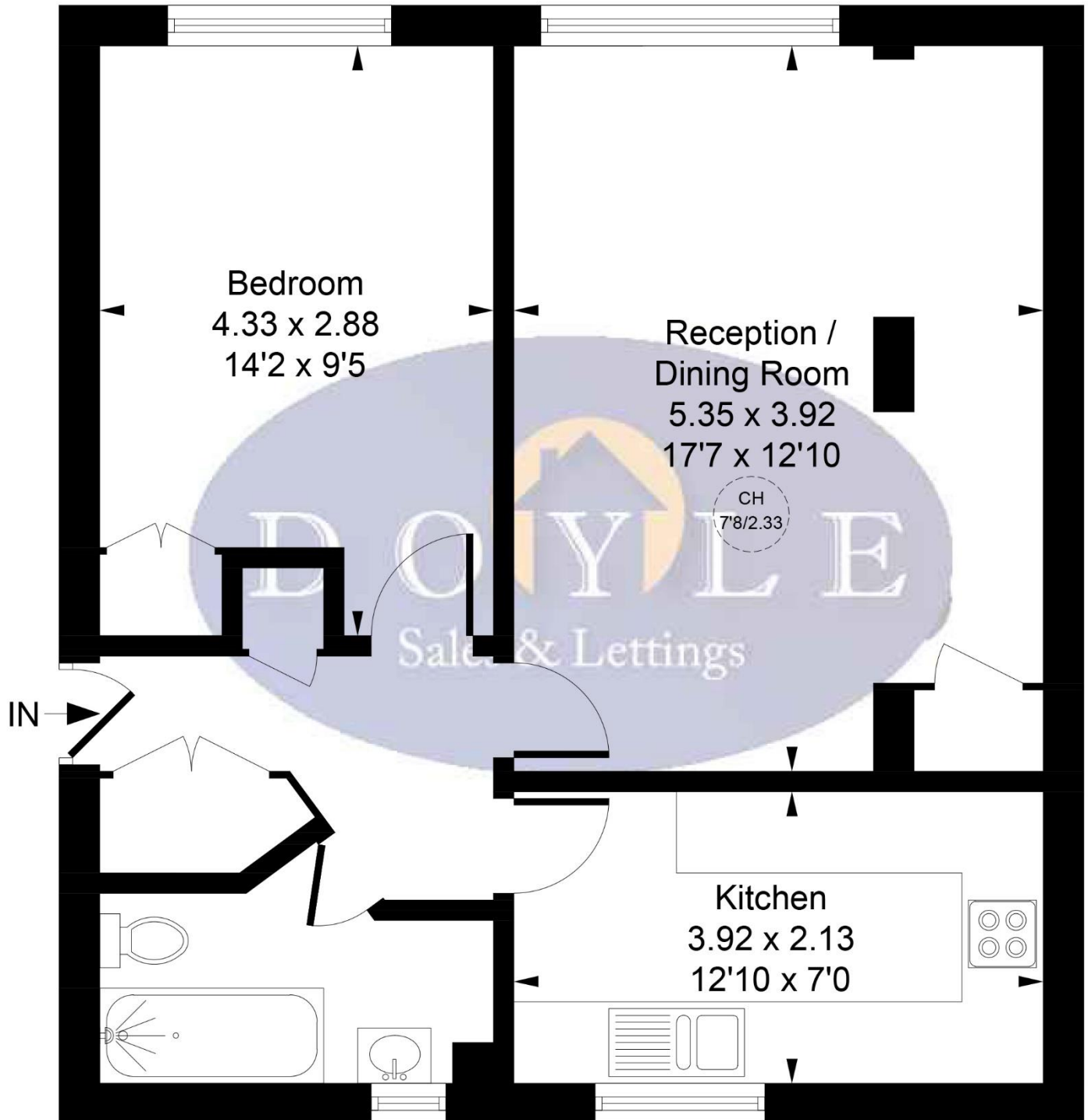


Clare House, Uxbridge Road, London, W7 3PX

Approximate Gross Internal Area
53.31 sq m / 574 sq ft



CH = Ceiling Height



Ground Floor 53.31 sq m / 574 sq ft

Whilst every attempt has been made to ensure the accuracy of the floor plan contained here, measurements of doors, windows, rooms and any other items are approximate and no responsibility is taken for any error, omission, or mis-statement. This plan is for illustrative purposes only and should be used as such by any prospective purchaser.

© Vizion Property Marketing Produced for Doyle Sales & Lettings

Map



VIEWING BY APPOINTMENT WITH AGENTS DOYLE SALES & LETTINGS

11 Broadway Buildings, Boston Rd, Hanwell, London, W7 3TT T: 020 8840 0171 E: info@doylesalesandlettings.co.uk W: www.doylesalesandlettings.co.uk

General: While we endeavour to make our sales particulars fair, accurate and reliable, they are only a general guide to the property and, accordingly, if there is any point which is of particular importance to you, please contact the office and we will be pleased to check the position for you, especially if you are contemplating travelling some distance to view the property.

Measurements: These approximate room sizes are only intended as general guidance. You must verify the dimensions carefully before ordering carpets or any built-in furniture.

Services: Please note we have not tested the services or any of the equipment or appliances in this property, accordingly we strongly advise prospective buyers to commission their own survey or service reports before finalizing their offer to purchase.

THESE PARTICULARS ARE ISSUED IN GOOD FAITH BUT DO NOT CONSTITUTE REPRESENTATIONS OF FACT OR FORM PART OF ANY OFFER OR CONTRACT. THE MATTERS REFERRED TO IN THESE PARTICULARS SHOULD BE INDEPENDENTLY VERIFIED BY PROSPECTIVE BUYERS OR TENANTS. NEITHER DOYLE SALES & LETTINGS NOR ANY OF ITS EMPLOYEES OR AGENTS HAS ANY AUTHORITY TO MAKE OR GIVE ANY REPRESENTATION OR WARRANTY WHATEVER IN RELATION TO THIS PROPERTY.

YOUR HOME IS AT RISK IF YOU DO NOT KEEP UP REPAYMENTS ON A MORTGAGE OR OTHER LOAN SECURED ON IT.

Written quotations available on request. All loans secured on property. Life assurance is usually required.

EPC Rating C

