



## Asking price of £2,300 per month Greenford Avenue, London, W7



- Three Double Bedroom Maisonette
- Reception
- Separate Fitted Kitchen
- Dishwasher & Washing Machine
- Family Bathroom With Bath & Shower Over
- Private Rear Landscaped Garden
- Easy Access To Hanwell Station
- Offered Unfurnished
- Available End Of January 2026

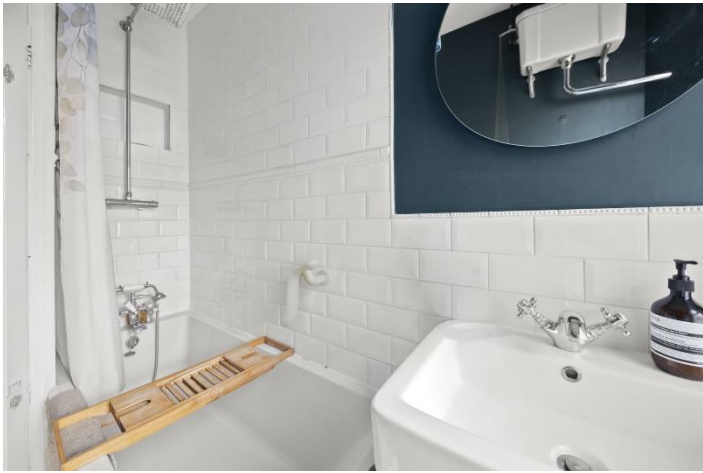
A first floor three double bedroom maisonette. The property consists of a reception, a separate fitted kitchen with dishwasher & washing machine, three double bedrooms, one with fitted wardrobes, a bathroom with bath & shower over and a private landscaped rear garden. The property is situated within easy walking distance from Hanwell Mainline Station and the popular Bunny Park. The A40/M4 are within easy reach and also the shopping and amenities of West Ealing & Ealing Broadway. Offered unfurnished and available end of January 2026.

# Greenford Avenue, London, W7

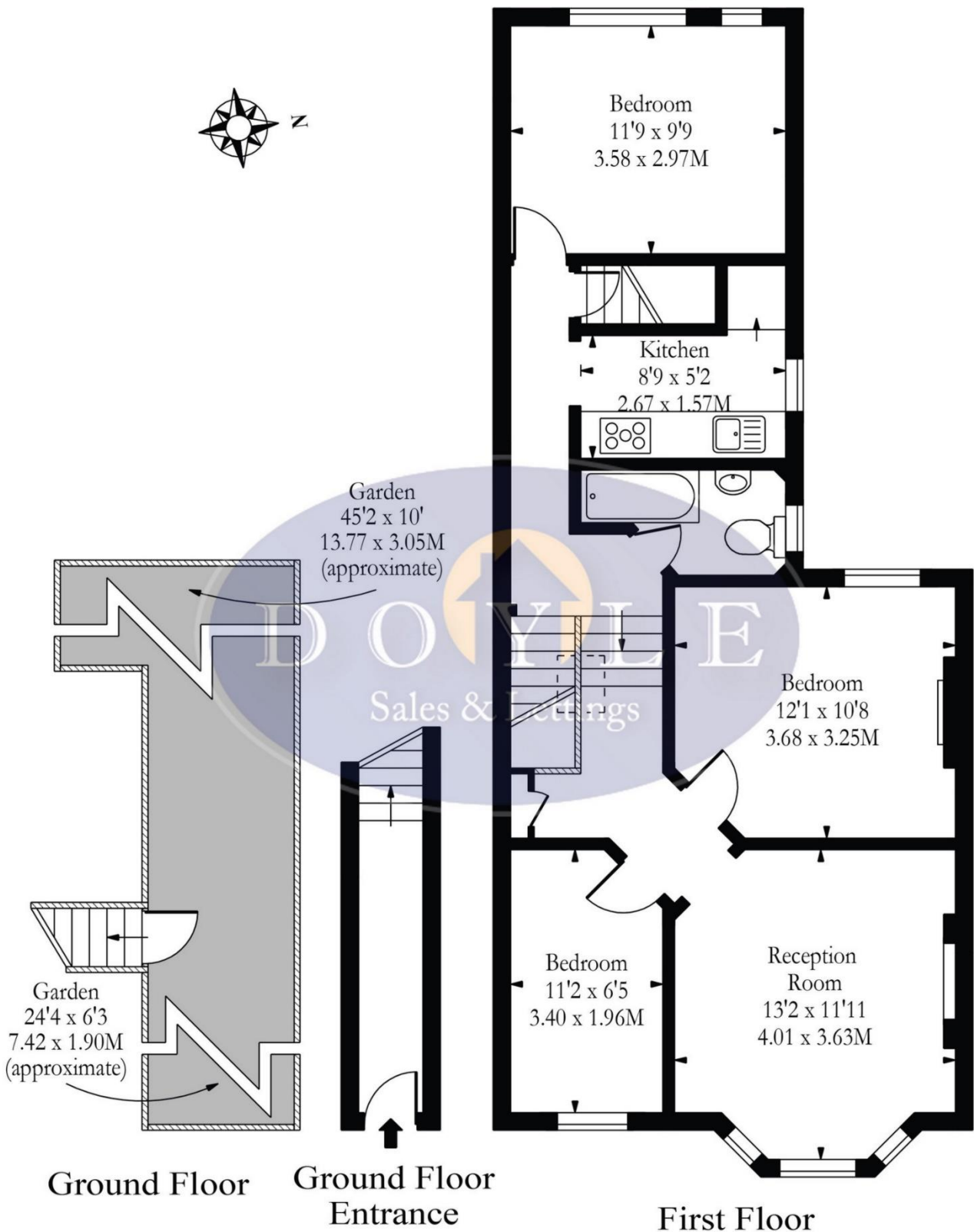
-  
-  
-







# Greenford Avenue, W7



**Approx Gross Internal Area 765 Sq Ft - 71.07 Sq M**

Illustration Purposes Only

Whilst every attempt has been made to ensure the accuracy of the floor plan contained here, measurements of doors, windows, rooms and any other items are approximate and no responsibility is taken for any errors, omissions or mis-statements. The plan is for illustrative purposes only, is not to scale and should be used as such by any prospective purchaser.

**Directions**

**Location**



**VIEWING BY APPOINTMENT WITH AGENTS DOYLE SALES & LETTINGS**

11 Broadway Buildings, Boston Rd, Hanwell, London, W7 3TT T: 020 8840 0171 E: [info@doylesalesandlettings.co.uk](mailto:info@doylesalesandlettings.co.uk) W: [www.doylesalesandlettings.co.uk](http://www.doylesalesandlettings.co.uk)

General: While we endeavour to make our sales particulars fair, accurate and reliable, they are only a general guide to the property and, accordingly, if there is any point which is of particular importance to you, please contact the office and we will be pleased to check the position for you, especially if you are contemplating travelling some distance to view the property.

Measurements: These approximate room sizes are only intended as general guidance. You must verify the dimensions carefully before ordering carpets or any built-in furniture.

Services: Please note we have not tested the services or any of the equipment or appliances in this property, accordingly we strongly advise prospective buyers to commission their own survey or service reports before finalizing their offer to purchase.

THESE PARTICULARS ARE ISSUED IN GOOD FAITH BUT DO NOT CONSTITUTE REPRESENTATIONS OF FACT OR FORM PART OF ANY OFFER OR CONTRACT. THE MATTERS REFERRED TO IN THESE PARTICULARS SHOULD BE INDEPENDENTLY VERIFIED BY PROSPECTIVE BUYERS OR TENANTS. NEITHER DOYLE SALES & LETTINGS NOR ANY OF ITS EMPLOYEES OR AGENTS HAS ANY AUTHORITY TO MAKE OR GIVE ANY REPRESENTATION OR WARRANTY WHATEVER IN RELATION TO THIS PROPERTY.

YOUR HOME IS AT RISK IF YOU DO NOT KEEP UP REPAYMENTS ON A MORTGAGE OR OTHER LOAN SECURED ON IT.

Written quotations available on request. All loans secured on property. Life assurance is usually required.