



£850,000

St Kilda Road, London, W13



- 3 Double Bedrooms
- End Of Terrace
- Opportunity To Extend
- 2 Receptions 2 Bathrooms
- 1,223 Sq Ft
- Chain Free

This charming, chain free, 3 double bedroom, end of terrace family home offers a truly inviting feel and is ideally located in West Ealing close to the Elizabeth line. The ground floor features two generous reception rooms, a separate kitchen, and the added convenience of a downstairs shower room and utility room. Upstairs, you'll find three comfortable double bedrooms along with a separate bathroom and toilet. Additional benefits include a large, east-facing garden with side access and an opportunity for potential extensions to both the ground and upper floors. Perfectly positioned for connectivity, St Kilda Road offers easy access to the Elizabeth Line at West Ealing and Piccadilly Line at Northfields Station, alongside local amenities. The property also falls within the sought-after catchment area for Oaklands Primary and Elthorne High School. With immense potential for renovation throughout, this home is a fantastic opportunity for a buyer looking to personalise and create their dream space.

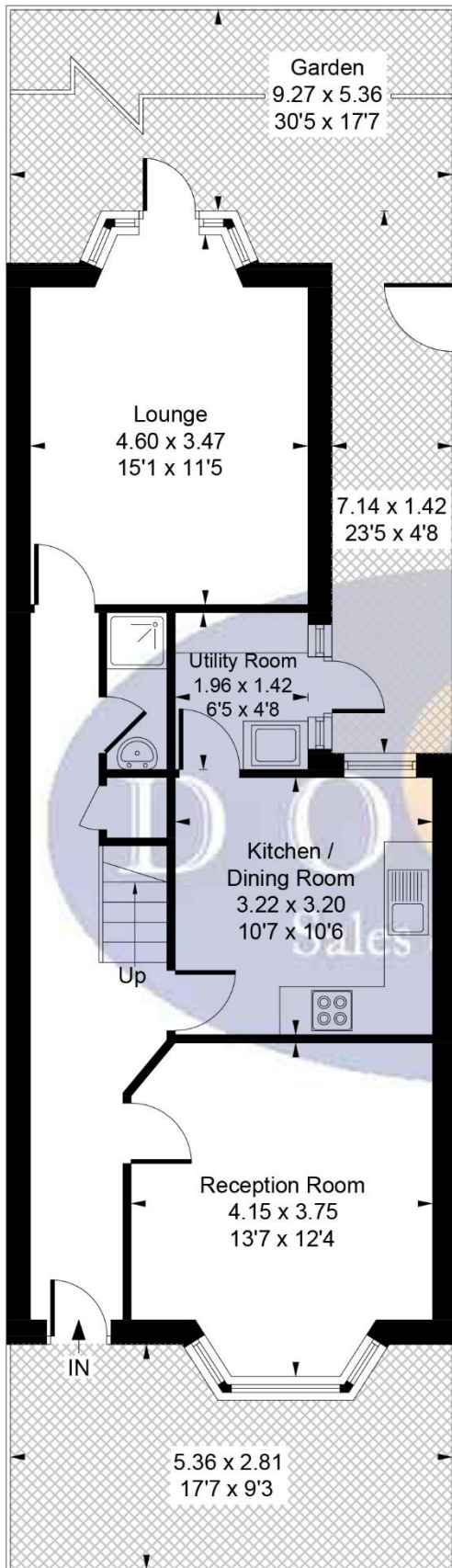
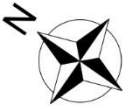
Some Photos Of Furniture Are CGI



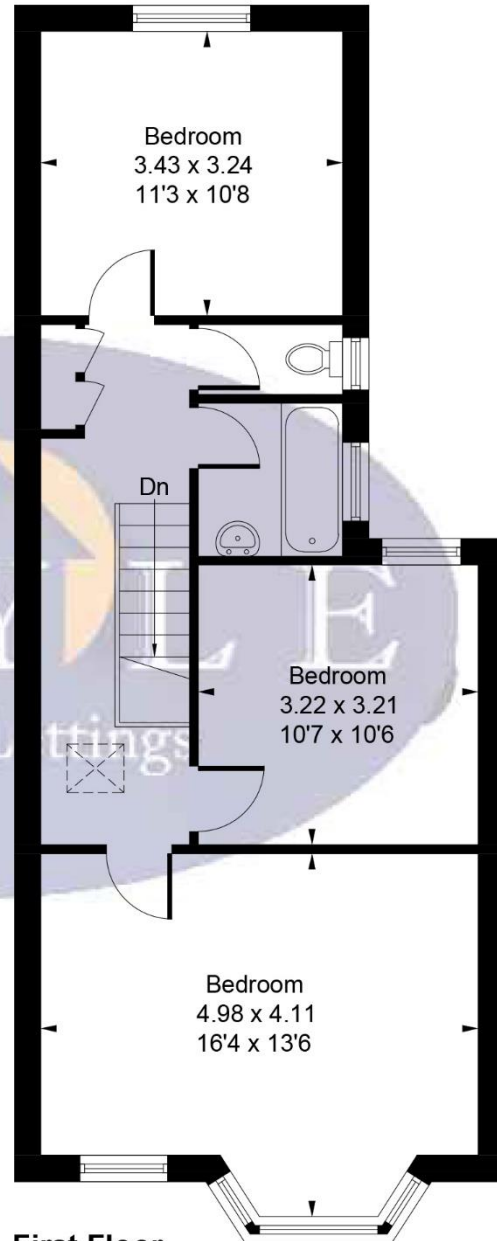
St Kilda Road, W13 9DF

Approximate Gross Internal Area

113.58 sq m / 1223 sq ft



Ground Floor
57.53 sq m / 619 sq ft



First Floor
56.05 sq m / 604 sq ft

Whilst every attempt has been made to ensure the accuracy of the floor plan contained here, measurements of doors, windows, rooms and any other items are approximate and no responsibility is taken for any error, omission, or mis-statement. This plan is for illustrative purposes only and should be used as such by any prospective purchaser.

Map



VIEWING BY APPOINTMENT WITH AGENTS DOYLE SALES & LETTINGS

11 Broadway Buildings, Boston Rd, Hanwell, London, W7 3TT T: 020 8840 0171 E: info@doylesalesandlettings.co.uk W: www.doylesalesandlettings.co.uk

General: While we endeavour to make our sales particulars fair, accurate and reliable, they are only a general guide to the property and, accordingly, if there is any point which is of particular importance to you, please contact the office and we will be pleased to check the position for you, especially if you are contemplating travelling some distance to view the property.

Measurements: These approximate room sizes are only intended as general guidance. You must verify the dimensions carefully before ordering carpets or any built-in furniture.

Services: Please note we have not tested the services or any of the equipment or appliances in this property, accordingly we strongly advise prospective buyers to commission their own survey or service reports before finalizing their offer to purchase.

THESE PARTICULARS ARE ISSUED IN GOOD FAITH BUT DO NOT CONSTITUTE REPRESENTATIONS OF FACT OR FORM PART OF ANY OFFER OR CONTRACT. THE MATTERS REFERRED TO IN THESE PARTICULARS SHOULD BE INDEPENDENTLY VERIFIED BY PROSPECTIVE BUYERS OR TENANTS. NEITHER DOYLE SALES & LETTINGS NOR ANY OF ITS EMPLOYEES OR AGENTS HAS ANY AUTHORITY TO MAKE OR GIVE ANY REPRESENTATION OR WARRANTY WHATEVER IN RELATION TO THIS PROPERTY.

YOUR HOME IS AT RISK IF YOU DO NOT KEEP UP REPAYMENTS ON A MORTGAGE OR OTHER LOAN SECURED ON IT.

Written quotations available on request. All loans secured on property. Life assurance is usually required.

EPC Rating E

