



£575,000

Grove Avenue, Hanwell, W7



- 3 Double Bedrooms
- 1,319 Sq Ft
- Stunning Design & Finish
- Share Of Freehold
- 2 Bathrooms
- Close To Elizabeth Line

This beautifully designed and impeccably finished three double bedroom, two bathroom extended apartment with share of freehold is ideally situated on Grove Avenue, one of Hanwell's most popular and picturesque tree-lined roads. Spanning an impressive 1,319 square feet, this stunning property offers a perfect blend of space, style, and modern comfort. The first floor welcomes you with a spacious, light-filled, bay-fronted reception and dining room, a stylish separate kitchen equipped for contemporary living, a well-proportioned double bedroom and a sleek family bathroom. Moving upstairs, the cleverly designed loft conversion maximises space and luxury, hosting a large master bedroom complete with a walk-in wardrobe, convenient eaves storage, and a glass-balustrade Juliet balcony that invites natural light. This upper level also features a third double bedroom and a modern shower room, making it an ideal layout for families or professionals alike. Perfect for commuters and lifestyle enthusiasts, Grove Avenue is exceptionally well-located just a short distance from Hanwell station for the Elizabeth line, alongside excellent bus routes and road networks. Residents will also enjoy close proximity to the green expanses of Bunny Park and Brent Valley golf course, as well as the vibrant local amenities, shops, and cafes found on Greenford Avenue and Hanwell Broadway.

Grove Avenue, Hanwell, W7

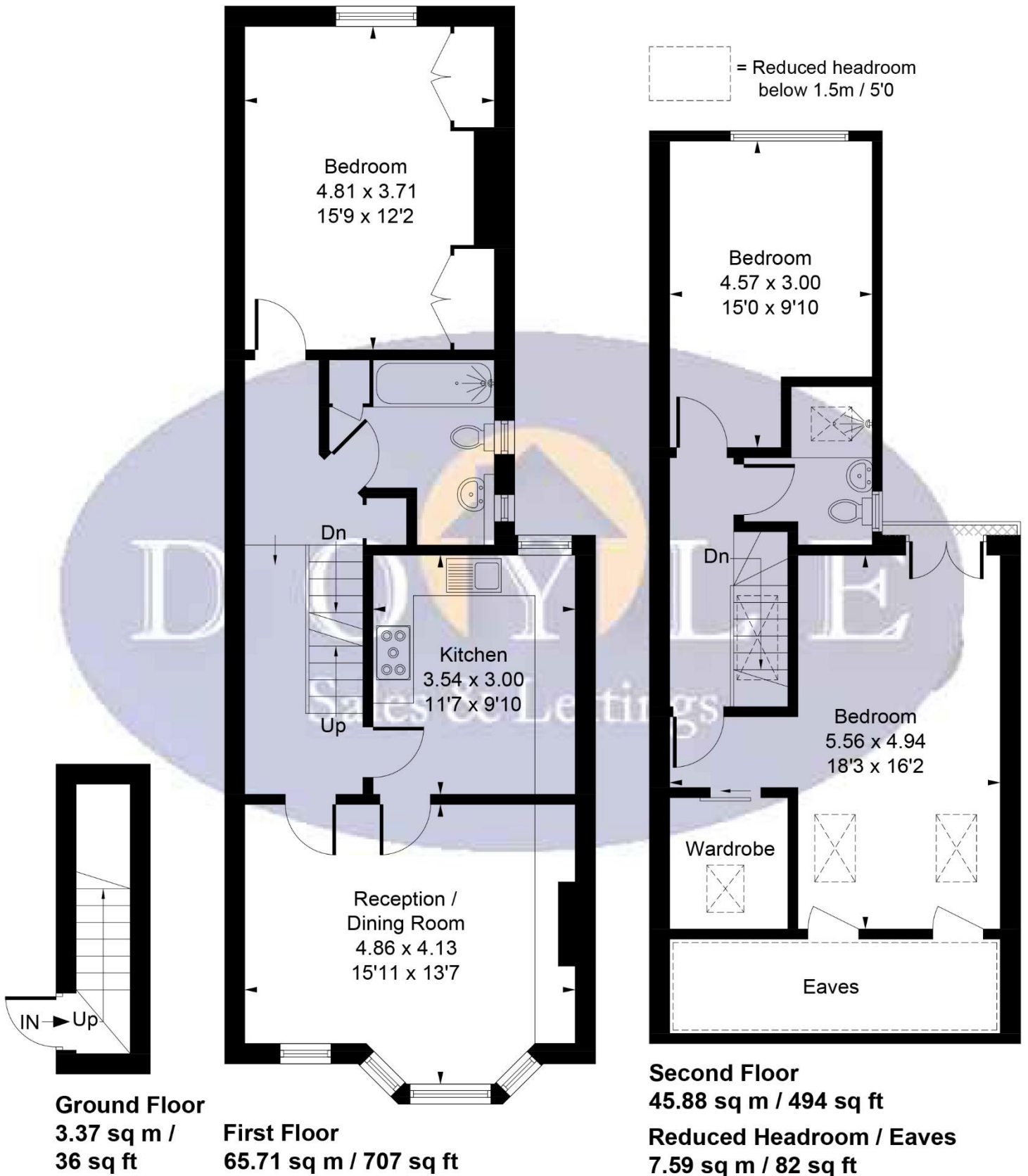


Grove Avenue, W7

Approximate Gross Internal Area = 114.96 sq m / 1237 sq ft

Reduced Headroom & Eaves = 7.59 sq m / 82 sq ft

Total = 122.55 sq m / 1319 sq ft



Whilst every attempt has been made to ensure the accuracy of the floor plan contained here, measurements of doors, windows, rooms and any other items are approximate and no responsibility is taken for any error, omission, or mis-statement.

This plan is for illustrative purposes only and should be used as such by any prospective purchaser.

© Vizion Property Marketing Produced for Doyle Sales & Lettings

Map



VIEWING BY APPOINTMENT WITH AGENTS DOYLE SALES & LETTINGS

11 Broadway Buildings, Boston Rd, Hanwell, London, W7 3TT T: 020 8840 0171 E: info@doylesalesandlettings.co.uk W: www.doylesalesandlettings.co.uk

General: While we endeavour to make our sales particulars fair, accurate and reliable, they are only a general guide to the property and, accordingly, if there is any point which is of particular importance to you, please contact the office and we will be pleased to check the position for you, especially if you are contemplating travelling some distance to view the property.

Measurements: These approximate room sizes are only intended as general guidance. You must verify the dimensions carefully before ordering carpets or any built-in furniture.

Services: Please note we have not tested the services or any of the equipment or appliances in this property, accordingly we strongly advise prospective buyers to commission their own survey or service reports before finalizing their offer to purchase.

THESE PARTICULARS ARE ISSUED IN GOOD FAITH BUT DO NOT CONSTITUTE REPRESENTATIONS OF FACT OR FORM PART OF ANY OFFER OR CONTRACT. THE MATTERS REFERRED TO IN THESE PARTICULARS SHOULD BE INDEPENDENTLY VERIFIED BY PROSPECTIVE BUYERS OR TENANTS. NEITHER DOYLE SALES & LETTINGS NOR ANY OF ITS EMPLOYEES OR AGENTS HAS ANY AUTHORITY TO MAKE OR GIVE ANY REPRESENTATION OR WARRANTY WHATEVER IN RELATION TO THIS PROPERTY.

YOUR HOME IS AT RISK IF YOU DO NOT KEEP UP REPAYMENTS ON A MORTGAGE OR OTHER LOAN SECURED ON IT.

Written quotations available on request. All loans secured on property. Life assurance is usually required.

EPC Rating C

