



Frensham Drive, Putney, SW15

A stunning three bedroom split level maisonette offering a well located and stylishly presented home.

ESTATE & AGENT

— Tailored, local and personal —

# Frensham Drive, Putney, SW15

## £369,950 Leasehold

### Entrance hall

Comprising; front door with double glazed opaque glass panels, solid wood stairs to first floor with glass panel to side, coat hooks and storage space underneath stairs, coving to ceiling, dado rail, single radiator, cupboard with electrical consumer unit and electric metre, skirting board, wood effect tiles to floor.

### Kitchen 10'7" x 12'0"

Comprising; white high-gloss fitted wall and base units with display cabinet, wine-rack, carousel corner cupboard and complimenting laminate worktops and breakfast bar with chandelier style lighting over, Italian sourced Victorian style tiles to splashback and light wood effect tiles to floor, integrated AEG microwave oven, integrated SMEG electric fan assisted oven, integrated AEG induction hob, space for a fridge/freezer, integrated AEG dishwasher, space and plumbing for a washing machine, integral stainless-steel sink and drainer unit with mixer tap and dish-rinser tap, spot lights to ceiling, upvc double glazed window, storage cupboard with gas-fired, Glow-Worm combination boiler.

### Sitting/dining room 12'6" x 18'3"

Comprising; glass panelled door from hall, coving to ceiling, ceiling mounted spotlights, tv point, two upvc double glazed windows, curtain rails, wood effect Spanish sourced tiles to floor, skirting board, double radiator, storage cupboard.

### Landing

Comprising; loft access with storage space, coving to ceiling, dado rail, solid wood floor, skirting board.

### Bedroom one 12'5" x 10'8"

Comprising; coving to ceiling, upvc double glazed window, tv point, single radiator, skirting board, wood effect laminate flooring.



**Bedroom two** 10'9" x 9'11"

Comprising; coving to ceiling, upvc double glazed window, fitted wardrobes, double radiator, skirting board, wood effect laminate flooring.

**Bedroom three/study** 9'6" x 7'5"

Comprising; coving to ceiling, upvc double glazed window, single radiator, fitted wardrobe, skirting board, wood effect laminate flooring.

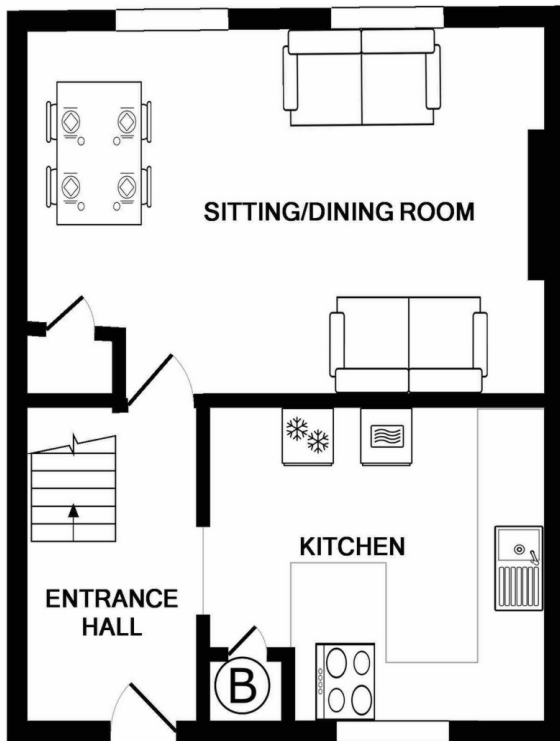
**Bathroom** 5'7" x 8'0"

Comprising; white three-piece suite, bath with electric shower over, low-level w.c., pedestal sink, part tiling to wall and splashback, tiles to floor, two upvc opaque double-glazed windows, wall vent, single radiator, wall mounted cupboard.

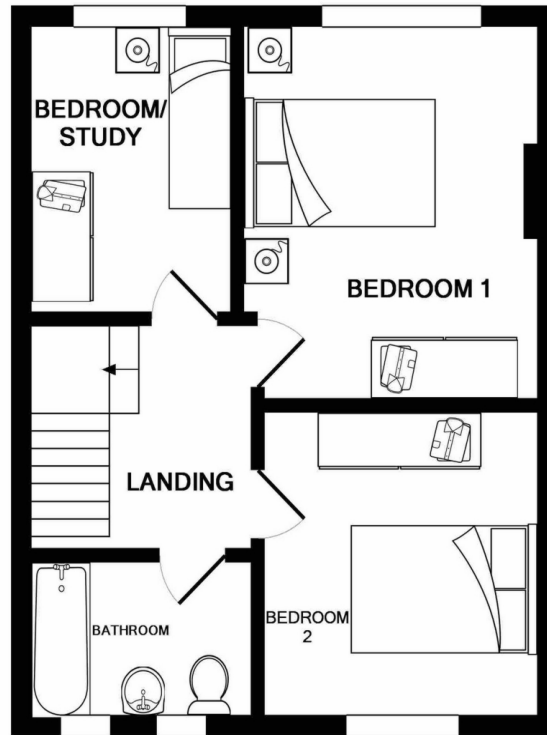
**Externally**

The property is accessed from a shared staircase leading to a first-floor balcony leading to the maisonette's own front door. There are communal gardens and off-street residents parking available on an unallocated basis.





1ST FLOOR  
APPROX. FLOOR  
AREA 449 SQ.FT.  
(41.7 SQ.M.)



2ND FLOOR  
APPROX. FLOOR  
AREA 439 SQ.FT.  
(40.8 SQ.M.)

TOTAL APPROX. FLOOR AREA 888 SQ.FT. (82.5 SQ.M.)

Whilst every attempt has been made to ensure the accuracy of the floor plan contained here, measurements of doors, windows, rooms and any other items are approximate and no responsibility is taken for any error, omission, or mis-statement. This plan is for illustrative purposes only and should be used as such by any prospective purchaser. The services, systems and appliances shown have not been tested and no guarantee as to their operability or efficiency can be given

Made with Metropix ©2018

Viewing strictly by  
appointment via  
Estate and Agent

CONTACT

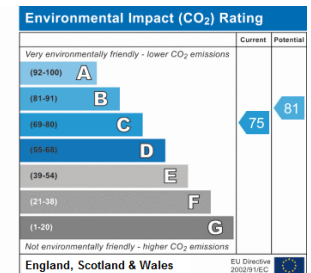
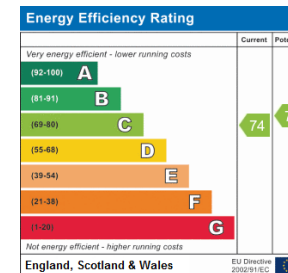
Estate and Agent  
Hampton Wick  
Kingston Upon Thames  
KT1 4AY

david@estateandagent.com

Open Hours-  
Monday to Friday 8am - 7pm  
Saturdays 9am - 5pm  
Sundays 10am - 4pm

0208 914 7884

www.estateandagent.com



Estate and Agent wish to advise prospective purchasers that we have not checked the services or appliances. The sales particulars have been prepared as guide only; any floor plan or map is for illustrative purposes only. Estates IT, for themselves and for the vendors or lessors of this property whose agents they are given that the particulars have been produced in good faith; do not constitute any part of a contract; no person in the employment of Pomp Properties has any authority to make or give any representation of warranty in relation to this property.

