

ESTATE & AGENT

— Tailored, local and personal —

T: 0208 914 7884

www.estateandagent.com


E: david@estateandagent.com


£1,850 per month School Road, Hampton Wick, KT1



A well-presented, part-furnished, two-bedroom period detached house in Hampton Wick with two reception rooms, garden and attractive kitchen and bathroom. Conveniently located to a variety of amenities and transport links.

School Road, Hampton Wick, KT1

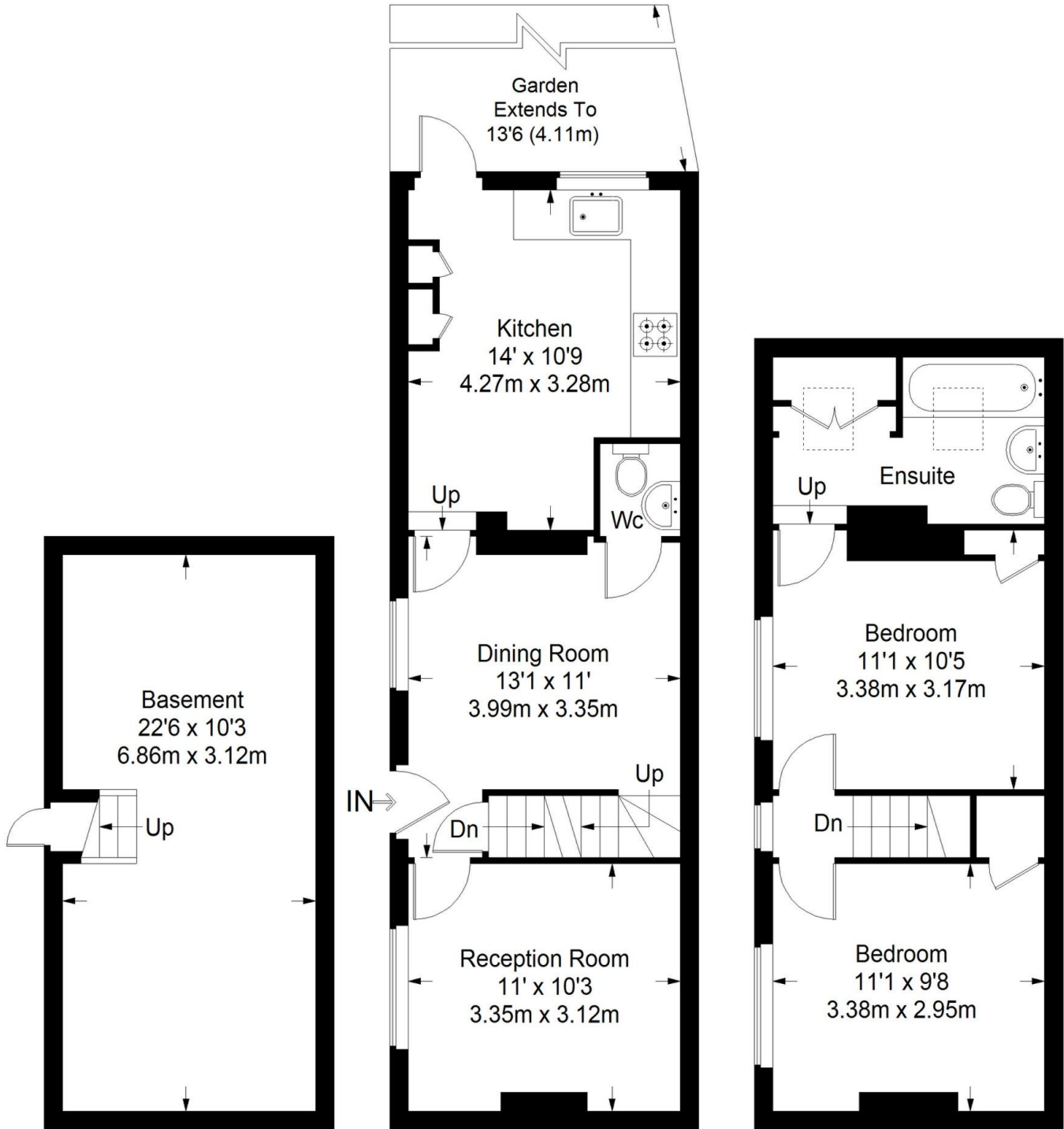
Environmental Impact (CO ₂) Rating		
	Current	Potential
<i>Very environmentally friendly - lower CO₂ emissions</i>		
(92-100) A		
(81-91) B		
(69-80) C		
(55-68) D		
(39-54) E	41	42
(21-38) F		
(1-20) G		
<i>Not environmentally friendly - higher CO₂ emissions</i>		
England, Scotland & Wales	EU Directive 2002/91/EC 	

Energy Efficiency Rating		
	Current	Potential
<i>Very energy efficient - lower running costs</i>		
(92-100) A		
(81-91) B		
(69-80) C		
(55-68) D		
(39-54) E	44	46
(21-38) F		
(1-20) G		
<i>Not energy efficient - higher running costs</i>		
England, Scotland & Wales	EU Directive 2002/91/EC 	





School Road, Hampton Wick



Basement = 232 sq ft

Ground Floor = 413 sq ft

First Floor = 336 sq ft

Approximate Gross Internal Area
 BASEMENT = 232 sq ft / 21.55 sq m
 GROUND FLOOR = 413 sq ft / 38.37 sq m
 FIRST FLOOR = 336 sq ft / 31.21 sq m
 Total = 981 sq ft / 91.13 sq m



This plan is for layout guidance only. Not drawn to scale unless stated. Windows and door openings are approximate. Whilst every care is taken in the preparation of this plan, please check all dimensions, shapes and compass bearings before making any decisions reliant upon them. (ID357409)

Directions

Location



VIEWING BY APPOINTMENT WITH AGENTS ESTATE AND AGENT

58 Park Road, Hampton Wick, Kingston Upon Thames, KT1 4AY T: 0208 914 7884 E: david@estateandagent.com W: www.estateandagent.com

General: While we endeavour to make our sales particulars fair, accurate and reliable, they are only a general guide to the property and, accordingly, if there is any point which is of particular importance to you, please contact the office and we will be pleased to check the position for you, especially if you are contemplating travelling some distance to view the property.

Measurements: These approximate room sizes are only intended as general guidance. You must verify the dimensions carefully before ordering carpets or any built-in furniture.

Services: Please note we have not tested the services or any of the equipment or appliances in this property, accordingly we strongly advise prospective buyers to commission their own survey or service reports before finalizing their offer to purchase.

THESE PARTICULARS ARE ISSUED IN GOOD FAITH BUT DO NOT CONSTITUTE REPRESENTATIONS OF FACT OR FORM PART OF ANY OFFER OR CONTRACT. THE MATTERS REFERRED TO IN THESE PARTICULARS SHOULD BE INDEPENDENTLY VERIFIED BY PROSPECTIVE BUYERS OR TENANTS. NEITHER ESTATE AND AGENT NOR ANY OF ITS EMPLOYEES OR AGENTS HAS ANY AUTHORITY TO MAKE OR GIVE ANY REPRESENTATION OR WARRANTY WHATEVER IN RELATION TO THIS PROPERTY.

YOUR HOME IS AT RISK IF YOU DO NOT KEEP UP REPAYMENTS ON A MORTGAGE OR OTHER LOAN SECURED ON IT.

Written quotations available on request. All loans secured on property. Life assurance is usually required.