



Cornwall Gardens, SW7

A spacious one bedroom second floor apartment located in South Kensington

ESTATE & AGENT

— Tailored, local and personal —

Cornwall Gardens, SW7
Guide Price £799,950, Leasehold

We are delighted to offer to the market with no upper chain this spacious one bedroom second floor apartment located in a beautiful stucco fronted period building in a highly sorted area of South Kensington.

The property is offered with vacant possession and requires a program of refurbishment with the accommodation briefly comprising: secure communal entrance, stairs to second floor, private inner hallway with storage cupboards, a breakfasting kitchen with a range of fitted wall and base units, a spacious reception room with two large windows overlooking Cornwall Gardens with an attractive period feature fireplace and high ceilings, a good sized double bedroom with high ceilings and finally stairs leading to the bathroom/wc at the rear of the apartment.

Externally, the property benefits from access to private resident's garden, on-street permit parking is available.

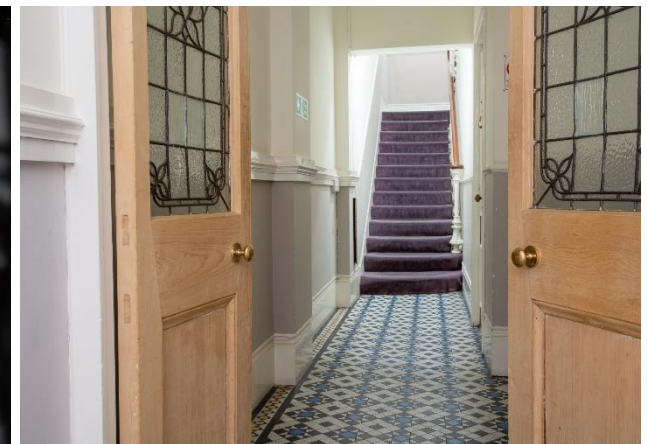
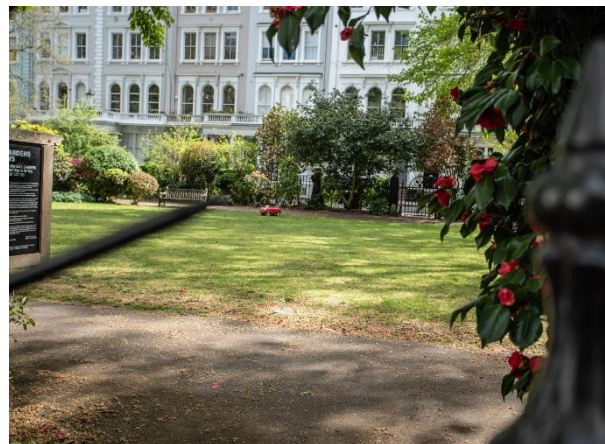
Cornwall Gardens is ideally situated north of Cromwell Road (A4) with a variety of amenities close by on Gloucester Road. Kensington High Street, Kensington Gardens and Hyde Park are also close by. Gloucester Road and South Kensington tube services are also available on hand to provide District, Circle and Piccadilly line services. The property is offered with 62 years remaining on the lease with viewing coming highly recommended.



- No upper chain
- Vacant possession
- Beautiful stucco fronted period property
- Fantastic location
- Period features
- Private residents communal garden
- Close to Gloucester Road and South Kensington tube stations
- In need of refurbishment
- Much potential on offer
- 730sqft/67.8sqm

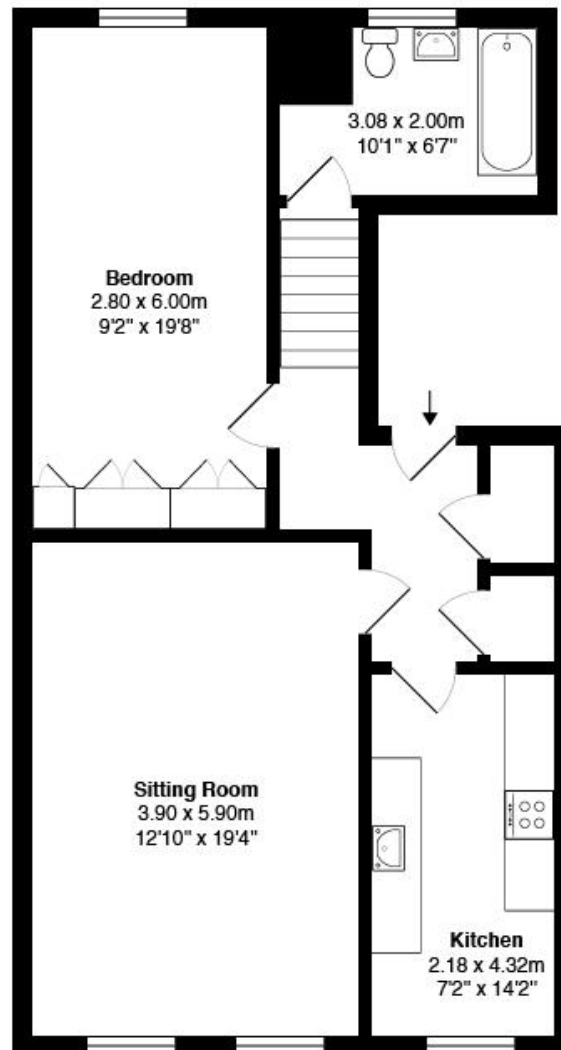


Energy Efficiency Rating		Current	Potential
<i>Very energy efficient - lower running costs</i>			
(92-100)	A		
(81-91)	B		83
(69-80)	C		
(55-68)	D		
(39-54)	E	47	
(21-38)	F		
(1-20)	G		
<i>Not energy efficient - higher running costs</i>			
England, Scotland & Wales		EU Directive 2002/91/EC	



40 Cornwall Gardens, SW7

Total Area: 67.8 m² ... 730 ft²



All measurements are approximate and for display purposes only

Viewing strictly by
appointment via
Estate and Agent

CONTACT

Estate and Agent
Hampton Wick
Kingston Upon Thames
KT1 4AY

david@estateandagent.com

Open Hours-
Monday to Friday 8am - 7pm
Saturdays 9am - 5pm
Sundays 10am - 4pm

0208 914 7884

www.estateandagent.com

Estate and Agent wish to advise prospective purchasers that we have not checked the services or appliances. The sales particulars have been prepared as guide only; any floor plan or map is for illustrative purposes only. Estates IT, for themselves and for the vendors or lessors of this property whose agents they are given that the particulars have been produced in good faith; do not constitute any part of a contract; no person in the employment of Pomp Properties has any authority to make or give any representation of warranty in relation to this property.

ESTATE & AGENT
— Tailored, local and personal —