

To Let

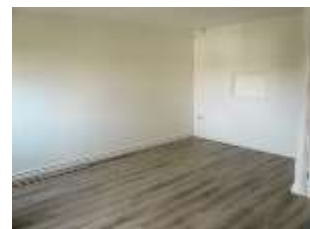
2 Hawkeys Mews, Lanner Hill, Redruth, TR15

AVAILABLE FROM 15TH OCTOBER 2021.
Three Bedroom, mid-terraced house on the outskirts of Redruth. Good sized Lounge/Diner, Cloakroom/WC, Kitchen, Three Bedrooms and First Floor Bathroom. The property is double glazed and heated by night store heating. There is an enclosed garden to the rear with rear pedestrian access. There is allocated parking for one vehicle. EPC: C. Affordability criteria will apply. No smokers/students/sharers. This tenancy will be offered with an initial term of 12 months.



- THREE BEDROOMS
- NIGHT STORE HEATING
- ENCLOSED REAR GARDEN
- OUTSKIRTS OF TOWN
- NO SHARERS/STUDENTS/SMOKERS
- INITIAL 12 MONTH TERM
- ALLOCATED PARKING
- LONG TERM LET

£795 per month Deposit £795



Energy performance certificate (EPC)

2 HAWKEYS MEWS LANNER HILL TR15 2NL		Energy rating C
Valid until 1 October 2030	Certificate number 8530-1320-9009-0742-0206	

Property type

Mid-terrace house

Total floor area

71 square metres

Rules on letting this property

Properties can be rented if they have an energy rating from A to E.

If the property is rated F or G, it cannot be let, unless an exemption has been registered. You can read [guidance for landlords on the regulations and exemptions](https://www.gov.uk/guidance/domestic-private-rented-property-minimum-energy-efficiency-standard-landlord-guidance) (<https://www.gov.uk/guidance/domestic-private-rented-property-minimum-energy-efficiency-standard-landlord-guidance>).

Energy efficiency rating for this property

This property's current energy rating is C. It has the potential to be B.

[See how to improve this property's energy performance.](#)