

To Let

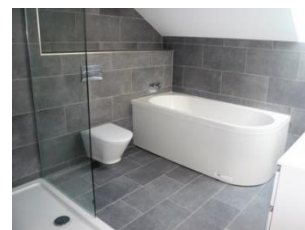
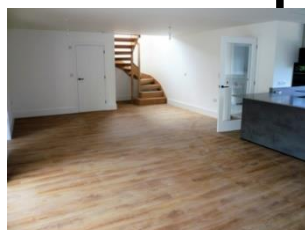
Holywell Road, Playing Place, Truro, TR3 6EP

Brand New Four Double Bedroom Executive Home situated in a fantastic village location in Playing Place within easy reach of Truro and Falmouth. There is a large open plan family room with fully fitted kitchen with quartz work surfaces and sliding doors to the garden. There is a separate lounge also with sliding door to the garden. There is a downstairs cloakroom/WC, Entrance Hall and internal door to the garage. To the first floor there is a large master bedroom with ensuite shower room/WC, 2nd Bedroom with an ensuite shower room/WC, two further double bedrooms and a family bathroom/WC with walk in shower enclosure. The property is warmed by air source heat pump with underfloor heating downstairs and radiators upstairs. There is a garden to the rear and ample parking for several vehicles in addition to the garage. EPC: B. Deposit £1950.



- FOUR DOUBLE BEDROOMS
- AIR SOURCE HEAT PUMP
- TWO ENSUITE SHOWER ROOMS
- GARAGE AND PARKING
- BRAND NEW PROPERTY
- 8.0M X 8.5M FAMILY ROOM
- COUNCIL TAX BAND TBA
- SEPARATE LOUNGE

£1,950 per month Deposit £1950



VIEWING BY APPOINTMENT WITH AGENTS FERGUSON YOUNG

3 Market Way, Redruth, Cornwall, TR15 2AU T: 01209 219911 E: sales@fergusonyoung.co.uk W: www.fergusonyoung.co.uk