

For Sale

4 Bedrooms Detached

Vermont Grove, Peterborough, PE3 6BN

An attractive location of the City, this detached family home consists of entrance hall, lounge with separate dining room, fitted kitchen and utility room, four bedrooms En-Suite to master and family bathroom. The property benefits from gas heating and Upvc double glazing. Enclosed south facing garden with access to running stream and bridge linked to the woodlands to rear. Double garage and ample drive. Viewing is highly recommended.



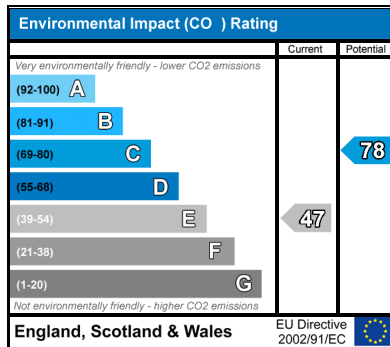
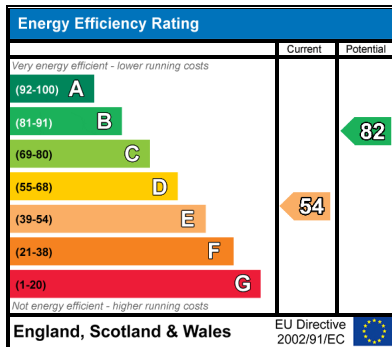
Double Glazed * Fitted Kitchen * French Windows * Patio * Front Garden * Gas Central Heating * Separate WC * Enclosed Garden * Driveway * Double Garage * En-suite Bathroom * Fantastic location

Asking price of £399,950 freehold

Homesabout Estate Agents & Lettings Ltd
The Annexe, 121 Park Road, Peterborough, Cambridgeshire, PE1 2TR
Tel: 01733 558800 F: 01733 553328
Web: www.homesabout.co.uk Email: sales@homesabout.co.uk

Vermont Grove, Peterborough, PE3 6BN

Entrance hall	Coved to textured ceiling. Single radiator.
Lounge	16'7" x 14'9" (5.05m x 4.50m) Coved to textured ceiling. Bay Upvc double glazed window to front. Two single radiators. Television point. French glazed double doors to:
Dining room	11'5" x 8'10" (3.48m x 2.69m) Coved to textured ceiling, sliding patio door to rear garden. Single radiator. Serving hatch to:
Kitchen	10'5" x 9'0" (3.18m x 2.74m) Fitted a range of wall and base units, complementary work surface. Leaded glass cabinet. Eye level double oven, gas hob with extractor fan over. Tiled flooring. Upvc double glazed window to rear.
Utility room	Complementary work surface. Plumbing and space for washing machine. Upvc double glazed door to rear and garden.
Landing	Spacious with access to bedrooms and family bathroom. Access to loft space.
Master bedroom	12'8" x 12'2" (3.86m x 3.71m) Coved to textured ceiling. Single radiator. Upvc double glazed window to front. Fitted triple wardrobe. Door to:
En-Suite	Fitted three-piece suite comprising of shower cubicle, closed coupled WC and wash hand basin. Tiled flooring.
Bedroom two	10'5" x 10'2" (3.18m x 3.10m) Coved to textured ceiling. Single radiator. Upvc double glazed window to rear.
Bedroom three	10'9" x 9'2" (3.28m x 2.79m) Coved to textured ceiling. Built-in double wardrobe. Single radiator. Upvc double glazed window to front.
Bedroom four	9'1" x 9'3" (2.77m x 2.82m) Textured ceiling. Single radiator. Upvc double glazed window to rear.
Family bathroom	Fitted three piece in alpine white comprising of panelled bath with mixer ap over. Closed coupled WC and wash hand basin. Obscure Upvc double glazed window to rear. Tiled flooring.
Outside	
Rear garden	South facing enclosed rear garden giving a wonderful view with wildlife, water stream with manmade wooden bridge giving access to the woodlands behind.
Front garden	Laid to lawn.
Double garage	Ample driveway to double garage with up and over doors, power and light.
Agent note	Viewings are strictly by appointment



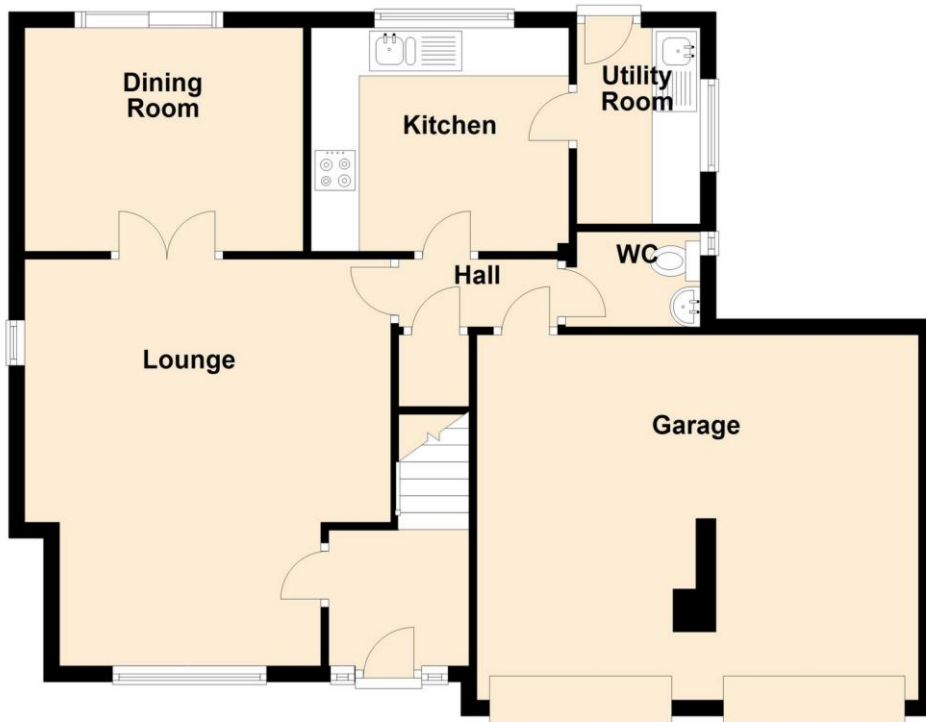
VIEWING BY APPOINTMENT WITH AGENTS HOMESABOUT ESTATE AGENTS & LETTINGS LTD
 OPENING HOURS: 9.00 to 17:30 Mon to Fri, 9:00 to 13:30 Saturdays, Closed Sundays & Bank Holidays,

Whilst every care is taken to ensure the accuracy of these details no responsibility for errors or misdescription can be accepted nor is any guarantee offered in respect of the property. These particulars do not constitute any part of an offer or contract.

Homesabout Estate Agents & Lettings Ltd
The Annexe, 121 Park Road, Peterborough, Cambridgeshire, PE1 2TR
Tel: 01733 558800 F: 01733 553328
Web: www.homesabout.co.uk Email: sales@homesabout.co.uk



Ground Floor



First Floor

