

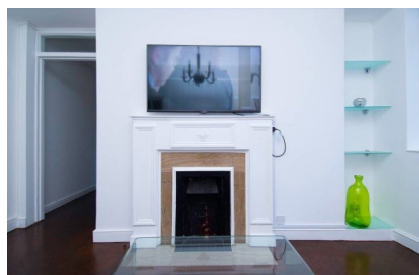
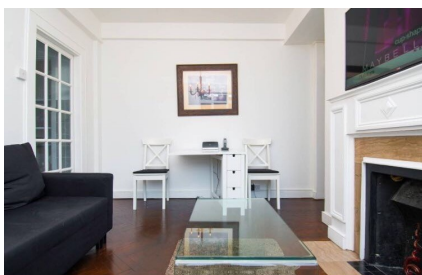
## Asking price of £1,550 per month Latymer Court, Hammersmith Road, Hammersmith, W6



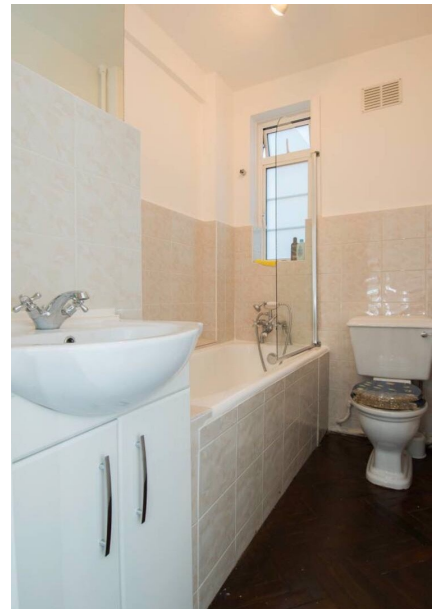
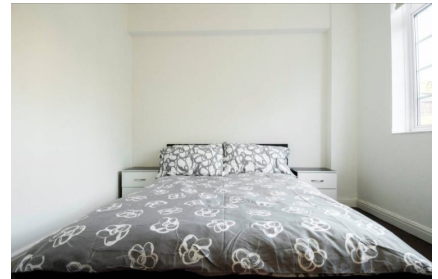
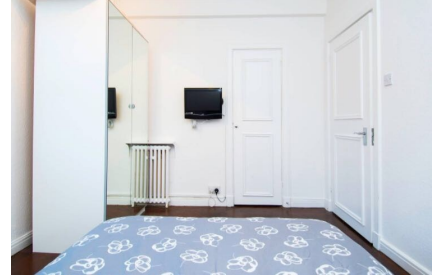
- Now Available (Furnished) Video Tour Available
- 7th Floor (Top Floor with Lifts)
- Brand New Carpets
- Built in Storage
- Separate Kitchen
- Nice Bathroom
- Double Bedroom
- Beautifully Presented Living Room
- Heating and hot water included
- 24/7 Portered Security

Now Available (Furnished) Video Tour Available


A one bedroom flat on the 7th floor with lifts in this very sought after portered building. The property is in excellent condition, brand new carpets throughout and comprises of double bedroom, living room, separate kitchen and bathroom.

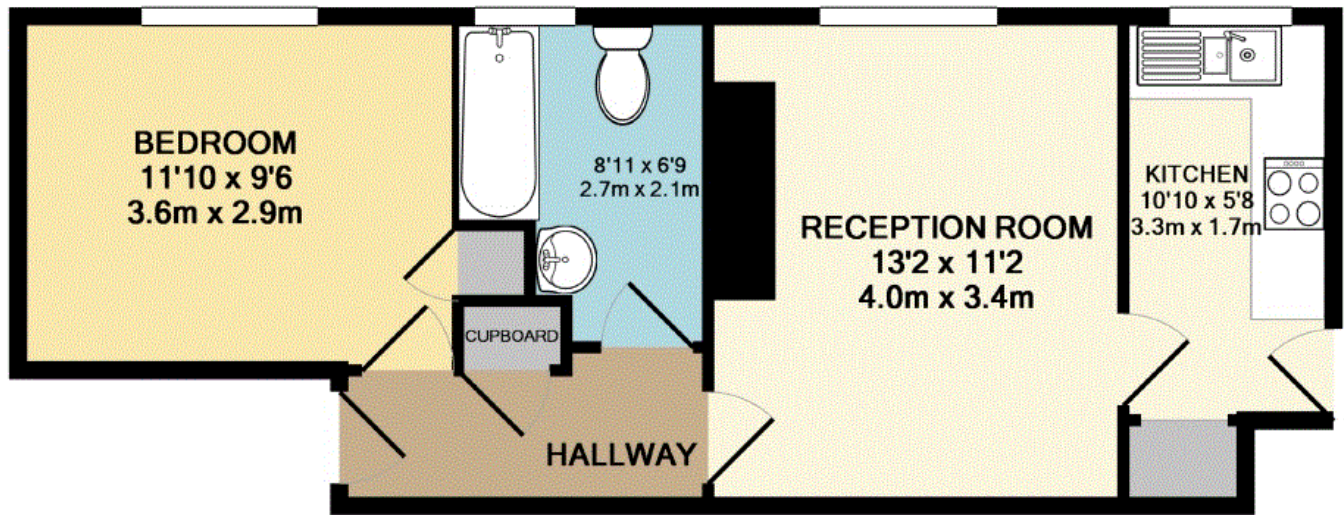


# Latymer Court, Hammersmith Road, Hammersmith, W6



Environmental Impact (CO <sub>2</sub> ) Rating		
	Current	Potential
Very environmentally friendly - lower CO <sub>2</sub> emissions		
(92-100) <b>A</b>	✗	✗
(81-91) <b>B</b>		
(69-80) <b>C</b>		
(55-68) <b>D</b>		
(39-54) <b>E</b>		
(21-38) <b>F</b>		
(1-20) <b>G</b>		
Not environmentally friendly - higher CO <sub>2</sub> emissions		
<b>England, Scotland &amp; Wales</b>	EU Directive 2002/91/EC	

Energy Efficiency Rating		
	Current	Potential
Very energy efficient - lower running costs		
(92-100) <b>A</b>	✘	✘
(81-91) <b>B</b>		
(69-80) <b>C</b>		
(55-68) <b>D</b>		
(39-54) <b>E</b>		
(21-38) <b>F</b>		
(1-20) <b>G</b>		
Not energy efficient - higher running costs		
<b>England, Scotland &amp; Wales</b>	EU Directive 2002/91/EC	



LATYMER COURT HAMMERSMITH ROAD LONDON W6 7JD  
 TOTAL APPROX. FLOOR AREA 417 SQ.FT. (38.8 SQ.M.)

Whilst every attempt has been made to ensure the accuracy of the floor plan contained here, measurements of doors, windows, rooms and any other items are approximate and no responsibility is taken for any error, omission, or mis-statement. This plan is for illustrative purposes only and should be used as such by any prospective purchaser. The services, systems and appliances shown have not been tested and no guarantee as to their operability or efficiency can be given.

Made with Metropix ©2014



VIEWING BY APPOINTMENT WITH AGENTS LATYMERS

152-154 Hammersmith Road, London, W6 7JP T: 0208 741 2233 E: info@latymers.co.uk W: www.latymers.co.uk

General: While we endeavour to make our sales particulars fair, accurate and reliable, they are only a general guide to the property and, accordingly, if there is any point which is of particular importance to you, please contact the office and we will be pleased to check the position for you, especially if you are contemplating travelling some distance to view the property.

Measurements: These approximate room sizes are only intended as general guidance. You must verify the dimensions carefully before ordering carpets or any built-in furniture.

Services: Please note we have not tested the services or any of the equipment or appliances in this property, accordingly we strongly advise prospective buyers to commission their own survey or service reports before finalizing their offer to purchase.

THESE PARTICULARS ARE ISSUED IN GOOD FAITH BUT DO NOT CONSTITUTE REPRESENTATIONS OF FACT OR FORM PART OF ANY OFFER OR CONTRACT. THE MATTERS REFERRED TO IN THESE PARTICULARS SHOULD BE INDEPENDENTLY VERIFIED BY PROSPECTIVE BUYERS OR TENANTS. NEITHER LATYMERS NOR ANY OF ITS EMPLOYEES OR AGENTS HAS ANY AUTHORITY TO MAKE OR GIVE ANY REPRESENTATION OR WARRANTY WHATSOEVER IN RELATION TO THIS PROPERTY. YOUR HOME IS AT RISK IF YOU DO NOT KEEP UP REPAYMENTS ON A MORTGAGE OR OTHER LOAN SECURED ON IT.

Written quotations available on request. All loans secured on property. Life assurance is usually required.