



49 High Street, Hythe, Kent CT21 5AD



8 ORMONDE ROAD HYTHE

£360,000 Freehold

Situated in a prime position, this beautifully presented mid terraced period house is just moments from the beach. The accommodation includes a sitting room, dining room, fitted kitchen/breakfast room with doors to the garden, 3 bedrooms & bathroom. Delightful west facing garden to the rear. EPC D



**8 Ormonde Road
Hythe
CT21 6DN**

**Entrance Vestibule, Sitting Room, Dining Room,
Kitchen/Breakfast Room, Bathroom, Three Bedrooms
Front & Rear Gardens**

DESCRIPTION

This charming mid terraced period house has been much improved by the current owner and now provides beautifully presented accommodation of particularly comfortable proportions with a light and airy sitting room, dining room, a well fitted kitchen/breakfast room and bathroom. On the first floor there are three bedrooms.

A particularly attractive feature of the property is the pretty west facing garden which enjoys a sunny aspect, has been designed for ease of maintenance and provides a delightful environment for alfresco entertaining.

SITUATION

Ormonde Road is a particularly sought after residential location, on level ground, to the south of the Royal Military Canal, moments from the seafront and a short, level walk from the busy High Street with its range of independent shops, boutiques, cafes and restaurants. The town also benefits from having 4 supermarkets (including Waitrose, Aldi and Sainsburys), There is a selection of sports and leisure facilities in the vicinity, including tennis, bowls, water sports, cricket, bowls and squash clubs etc. as well as The Hotel Imperial Leisure Complex and two golf courses. The property is also in the catchment area for Hythe Bay Primary School and only a short walk from it. The larger town of Folkestone is 5 miles and the Cathedral City of Canterbury 15 miles.

The area is convenient for communication to London and the Continent with the M20 motorway (Junction 11) 2½ miles distant, the Channel Tunnel Terminal 3 miles and a mainline railway station at Saltwood just over 2 miles away. High Speed trains to London St Pancras are available from both Ashford (10 miles) and Folkestone (Central and West). (All distances are approximate).

Lawrence & Co for itself and as agent for the vendor or lessor (as appropriate) gives notice that: 1 These particulars are only a general outline for the guidance of intending purchasers or lessees and do not constitute in whole or in part an offer or a Contract. 2 Reasonable endeavours have been made to ensure that the information given in these particulars is materially correct but any intending purchaser or lessee should satisfy themselves by inspection, searches, enquiries and survey as to the correctness of each statement. 3 All statements in these particulars are made without responsibility on the part of Lawrence & Co or the vendor or lessor. 4 No statement in these particulars is to be relied upon as a statement or representation of fact. 5 Neither Lawrence & Co nor anyone in its employment or acting on its behalf has authority to make any representation or warranty in relation to this property. 6 Nothing in these particulars shall be deemed to be a statement that the property is in good repair or condition or otherwise nor that any services or facilities are in good working order. 7 Photographs may show only certain parts and aspects of the property at the time when the photographs were taken and you should rely upon actual inspection. 8 No assumption should be made in respect of parts of the property not shown in photographs. 9 Any areas, measurements or distances are only approximate. 10 Any reference to alterations or use is not intended to be a statement that any necessary planning, building regulation, listed building or any other consent has been obtained. 11 Amounts quoted are exclusive of VAT if applicable. 12 Whilst reasonable endeavours have been made to ensure the accuracy of any floor plan contained in these particulars, all measurements and areas are approximate and no responsibility is taken for any error, omission or mis-statement. This plan is for illustrative purposes only and should be used as such by any prospective purchaser. 12a Any mapping contained within these particulars is for illustrative purposes only and should be used as such by any prospective purchaser. No responsibility is taken for any error, omission or mis-statement.

SITTING ROOM

Polished timber flooring throughout and continuing into the dining room, coved ceiling, fireplace opening upon a slate hearth and with timber mantel above, alcove with built-in cabinet, bay with double glazed windows to front, radiator, wood panelled door to:

DINING ROOM

Coved ceiling, fireplace opening with slate hearth, door giving access to understairs storage cupboard, opening and step down to:

KITCHEN

Well fitted with a comprehensive range of base cupboard and drawer units incorporating recess and plumbing for dishwasher and washing machine, integrated oven, square edge wood effect worksurface inset with composite sink and drainer unit with mixer tap, induction hob with extractor above, coordinating upstands, space for fridge/freezer, coved ceiling, small loft hatch, skylight window, high level double glazed window to side, radiator, sliding double glazed doors opening to rear garden and further door to:

BATHROOM

Fitted with a contemporary suite comprising P ended panelled bath with electric shower over and mixer tap, low level WC, wash basin with vanity cupboard below, recessed lighting, obscure double glazed window to side, localised tiling, heated ladder rack towel rail.

Stairs situated between the sitting room and dining room with hand rail rising to:

FIRST FLOOR LANDING

Access to loft space, radiator, doors to:

BEDROOM 1

Fitted wardrobe cupboards, double glazed window overlooking the front of the property, radiator.

BEDROOM 2

Built-in storage cupboard housing gas fired combination boiler, double glazed window overlooking rear garden, radiator.

BEDROOM 3

Double glazed window overlooking rear garden, radiator.

OUTSIDE

Front Garden

The garden to the front of the property is predominantly topped with slate chippings for ease of maintenance and bordered by low painted stone/brick walls and with a pathway leading to the front entrance door.

Rear Garden

Immediately to the rear of the property is a decked terrace with the remainder of the garden laid to slate chippings and incorporating a further circular paved patio. The garden is well enclosed by close boarded timber fencing to side and attractive brick wall to the rear, timber framed storage shed.

EPC Rating D

COUNCIL TAX

Band C approx £2141.43 (2025/26)
Shepway District Council.

VIEWING

Strictly by appointment with **LAWRENCE & CO, 01303 266022.**



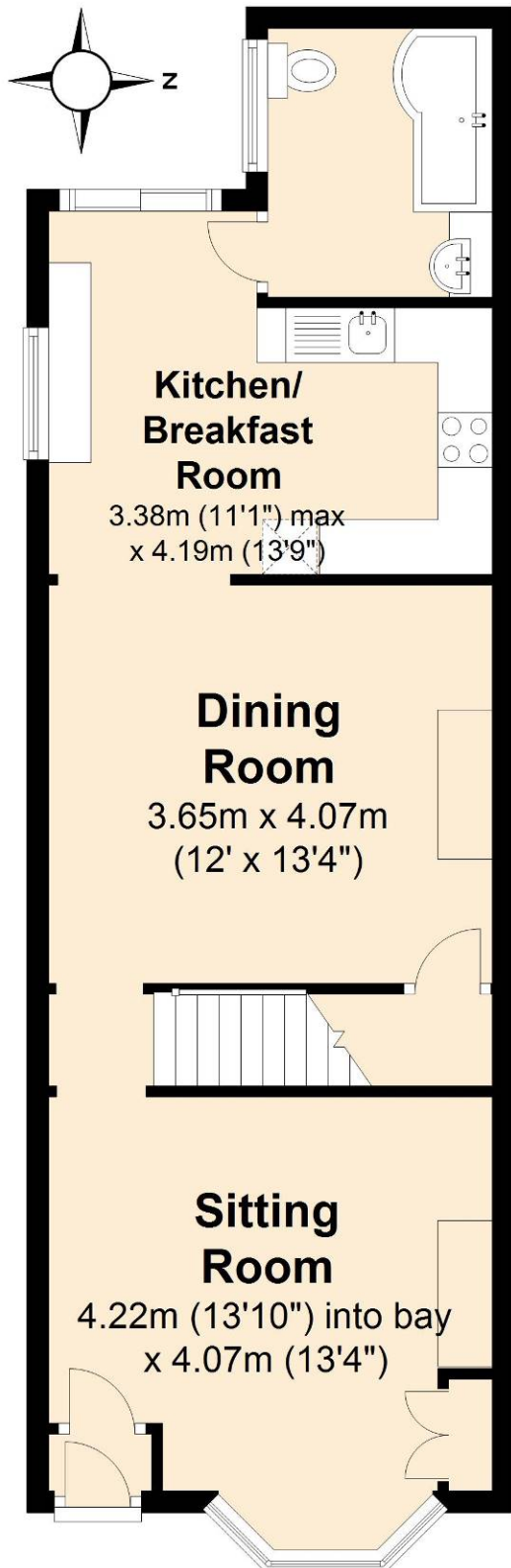






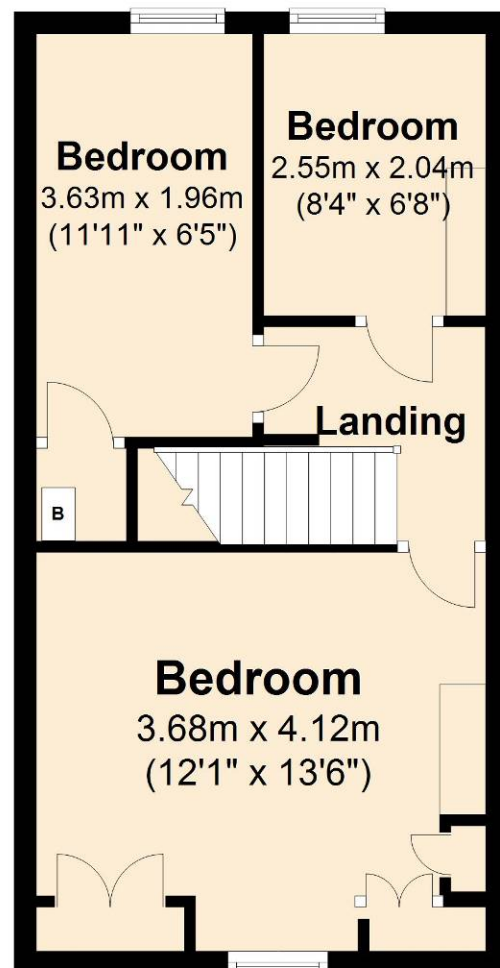
Ground Floor

Approx. 51.6 sq. metres (555.3 sq. feet)



First Floor

Approx. 34.2 sq. metres (368.6 sq. feet)



Total area: approx. 85.8 sq. metres (923.8 sq. feet)

Disclaimer: These plans are for information purposes only and are intended to show approximate