



49 High Street, Hythe, Kent CT21 5AD



**21 CORUNNA CLOSE
HYTHE**

**£275,000 Freehold
NO ONWARD CHAIN**

A well presented detached bungalow in a convenient central location and situated on Hythe's picturesque lower hillside. Comprising an entrance hall, a generous sitting room, fitted kitchen, two bedrooms and a bathroom. Front & rear gardens. Off-road parking and garage. EPC D.



21 Corunna Close, Hythe CT21 5EA

**Entrance Hall, Sitting Room, Kitchen,
Two Bedrooms, Bathroom,
Garage, Off-Road Parking, Front & Rear Garden**

DESCRIPTION

Conveniently positioned within reasonable walking distance of the High Street on a peaceful cul-de-sac, this detached bungalow enjoys well presented accommodation which is of particularly comfortable proportions. This includes an entrance hall leading to a generous sitting room, a well fitted kitchen, two comfortably sized bedrooms and a bathroom.

The pretty garden to the rear of the bungalow has been designed for ease of maintenance and offers a good level of privacy. The bungalow also benefits from a garage and off-road parking.

SITUATION

Corunna Close enjoys a convenient central location on the sought after lower hillside within a short walk of Hythe's bustling High Street with its range of interesting shops, boutiques, restaurants and cafes. The town is also well served by 4 supermarkets (including Waitrose, Sainsburys and Aldi), doctors surgeries, etc.

The attractive, unspoilt seafront and picturesque Royal Military Canal are a short walk away together with a variety of sports and leisure facilities, including 2 golf courses, swimming pool, cricket, squash, bowls and lawn tennis clubs together with the Hotel Imperial Leisure Centre.

The area is fortunate in having particularly good communications with a main line railway station in Saltwood (Sandling 2 miles) and access to the M20 (Junction 11 4 miles). The High Speed Link rail service to Stratford and St Pancras is available from Folkestone West (5 miles) and Ashford International (10 miles), with journey times of 53 and 37 minutes respectively. The Channel Tunnel Terminal is just over 3 miles away and the ferry port of Dover 12 miles away. (All distances are approximate.)



The accommodation comprises:

ENTRANCE HALL

Entered via a UPVC and obscure double glazed door, hatch giving access to loft space, built-in cupboard, radiator, doors to:

SITTING ROOM

Of a generous size with double glazed window to front and further double glazed suspended bow bay window to front, radiator.

KITCHEN

Well fitted with a range of base cupboards and drawer units incorporating recess and plumbing for washing machine and dishwasher and recess for fridge freezer, integrated Hotpoint electric oven, integrated wine cooler, worksurface inset with 1 ½ bowl stainless steel sink and drainer unit with mixer tap, four burner gas hob with extractor hood above, tiled splashbacks, coordinating wall cupboards, double glazed window to front, UPVC and double glazed door to side, timber effect flooring, radiator.

BEDROOM

Double glazed window to rear overlooking the garden, radiator.

BEDROOM

Double glazed casement doors giving access to the rear garden, timber effect flooring, radiator.

BATHROOM

P-ended shower bath with glazed shower screen, mixer tap and wall-mounted shower, low-level WC with concealed cistern, wash basin with vanity cupboard below, localised

tiling, extractor fan, obscured double-glazed window to rear, heated ladder rack towel rail, timber effect flooring.

OUTSIDE

FRONT GARDEN

To the front of the property a small flight of steps that lead up from the road to a pathway leading to the front door, flanked on either side by areas of lawn and to the side is a driveway providing off-road parking and access to the garage. A pathway to the side of the property gives access to the:-

REAR GARDEN

Directly to the rear of the property is a generous paved terrace, a flight of steps gives access to a tiered garden which is topped in stone and planted with a variety of shrubs, herbaceous and other plants and incorporates a magnificent Magnolia. The garden is well enclosed by close boarded timber panelled fencing. Outside tap & outside lighting.

GARAGE

Up and over door to front, personal door to rear.

EPC Rating D

COUNCIL TAX

Band C approx. £2228.22 (2026/27)
Folkestone & Hythe District Council.

VIEWING

Strictly by appointment with **LAWRENCE & CO, 01303 266022.**

Lawrence & Co for itself and as agent for the vendor or lessor (as appropriate) gives notice that: 1 These particulars are only a general outline for the guidance of intending purchasers or lessees and do not constitute in whole or in part an offer or a Contract. 2 Reasonable endeavours have been made to ensure that the information given in these particulars is materially correct but any intending purchaser or lessee should satisfy themselves by inspection, searches, enquiries and survey as to the correctness of each statement. 3 All statements in these particulars are made without responsibility on the part of Lawrence & Co or the vendor or lessor. 4 No statement in these particulars is to be relied upon as a statement or representation of fact. 5 Neither Lawrence & Co nor anyone in its employment or acting on its behalf has authority to make any representation or warranty in relation to this property. 6 Nothing in these particulars shall be deemed to be a statement that the property is in good repair or condition or otherwise nor that any services or facilities are in good working order. 7 Photographs may show only certain parts and aspects of the property at the time when the photographs were taken and you should rely upon actual inspection. 8 No assumption should be made in respect of parts of the property not shown in photographs. 9 Any areas, measurements or distances are only approximate. 10 Any reference to alterations or use is not intended to be a statement that any necessary planning, building regulation, listed building or any other consent has been obtained. 11 Amounts quoted are exclusive of VAT if applicable. 12 Whilst reasonable endeavours have been made to ensure the accuracy of any floor plan contained in these particulars, all measurements and areas are approximate and no responsibility is taken for any error, omission or mis-statement. This plan is for illustrative purposes only and should be used as such by any prospective purchaser. 12a Any mapping contained within these particulars is for illustrative purposes only and should be used as such by any prospective purchaser. No responsibility is taken for any error, omission or mis-statement.

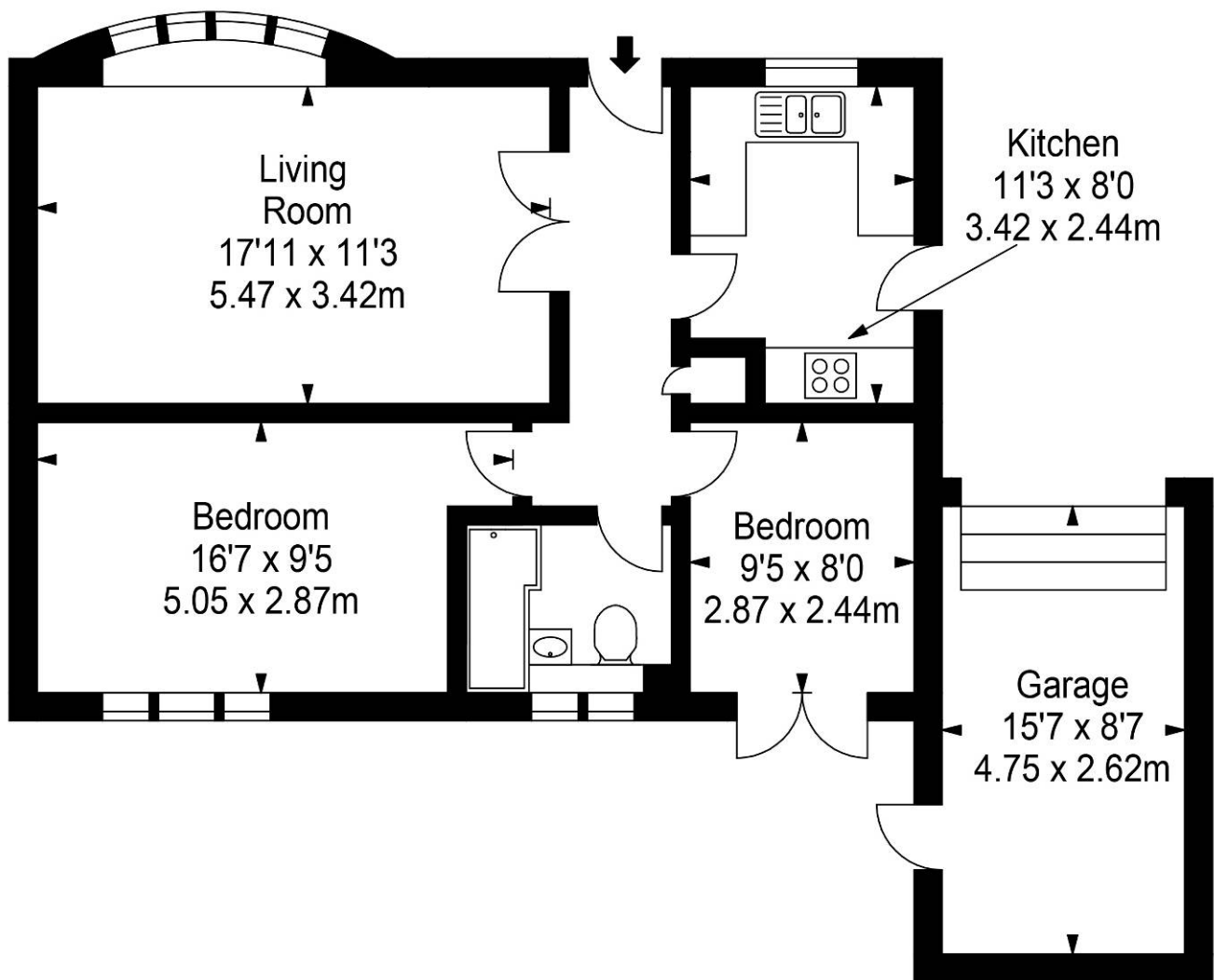






Corunna Close, Hythe, CT21 5AE

Approximate Gross Internal Area :-
Ground Floor :- 74.13 sq m / 798 sq ft
(Including Garage)
Total :- 74.13 sq m / 798 sq ft



Ground Floor

Illustration for identification purposes only, measurements are approximate, not to scale.
floor plan by: www.creativeplanetlk.com