



# *The Bishops Avenue*

Hampstead, N2, London

£2,450 per week

buy. sell. rent. let. **liv.**





This Exceptional 6 double bedroom detached family residence set behind gate.

The property comprises generously sized double reception room with grand features, light filled dining room, study, modern and fully fitted kitchen/diner, master bedroom with en suite bathroom and walk-in wardrobe, further five spacious bedrooms, further three bathrooms, shower room, guest cloakroom, garden, garage and off-street parking.

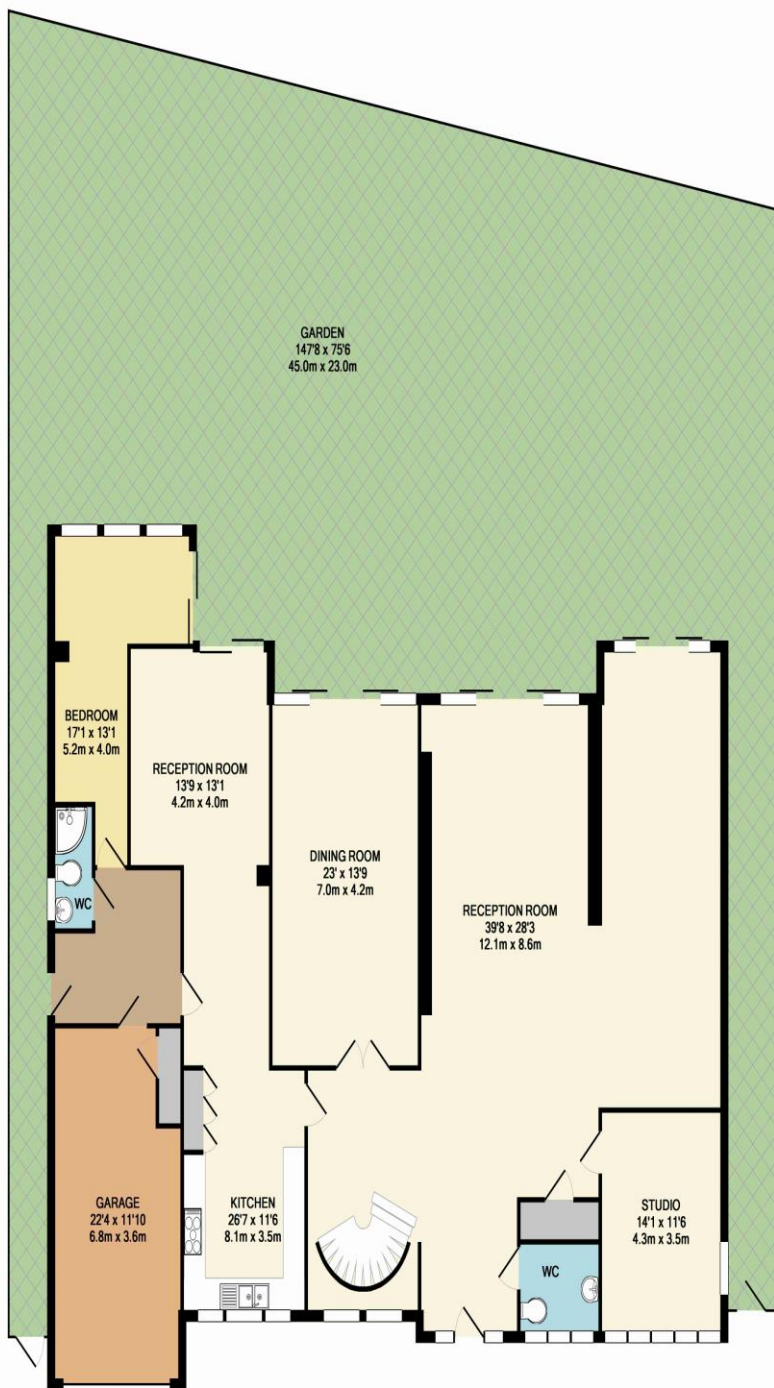
The Bishops Avenue is enviably located close to the beautiful open spaces of Highgate Golf Club, with the shops and restaurants found in East Finchley also nearby.











GROUND FLOOR



1ST FLOOR

TOTAL APPROX. FLOOR AREA 4844 SQ.FT. (450.0 SQ.M.)

Whilst every attempt has been made to ensure the accuracy of the floor plan contained here, measurements of doors, windows, rooms and any other items are approximate and no responsibility is taken for any error, omission, or mis-statement. This plan is for illustrative purposes only and should be used as such by any prospective purchaser. The services, systems and appliances shown have not been tested and no guarantee as to their operability or efficiency can be given.

Made with Metropix 62010

Liv Homes  
Telephone  
+44 (0)20 7449 0449  
Fax  
+44 (0)20 7449 0409  
Email  
emma@livhomes.com