



38 Randolph Avenue | Little Venice
London | W9

Flat B @ 38 Randolph Avenue | Little Venice | London

W9 1BE

£625,000 | Share of Freehold

A large one bedroom luxury flat on the top floor with lift access in a beautiful white stucco fronted building, this property has been newly refurbished and located in the heart of Little Venice.

The property comprises of a large entrance hall, large living room with open plan kitchen with ample natural light and modern appliances throughout, also this beautiful property has a large bathroom with whirlpool system and waterproof in-wall television from Aquavision and large bright double bedroom with walk-in wardrobes.

For further lifestyle enhancement a lift is situated in the lobby and you are only a short walk from the centre of Little Venice which boasts a selection of exotic restaurants and ornate shops.



Energy Efficiency Rating		Environmental Impact (CO ₂) Rating	
	Current	Potential	
Very energy efficient - lower running costs			Very environmentally friendly - lower CO ₂ emissions
(92-100) A			(92-100) A
(81-91) B			(81-91) B
(69-80) C			(69-80) C
(55-68) D			(55-68) D
(39-54) E			(39-54) E
(21-38) F			(21-38) F
(1-20) G			(1-20) G
Not energy efficient - higher running costs			Not environmentally friendly - higher CO ₂ emissions
England & Wales	EU Directive 2002/91/EC		England & Wales
			EU Directive 2002/91/EC



1 Northways Parade Finchley Road | London NW3 5EN
Telephone: 020 7449 0449 | Fax: 020 7449 0409
Email: service@livhomes.com
www.livhomes.com



KEY FEATURES

- A large luxury one bedroom
- Open Plan kitchen
- Walk-in wardrobe
- Located in the heart of Little Venice.
- Waterproof in-wall television in Bathroom
- In a beautiful white stucco fronted building
- Share of freehold















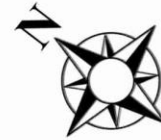
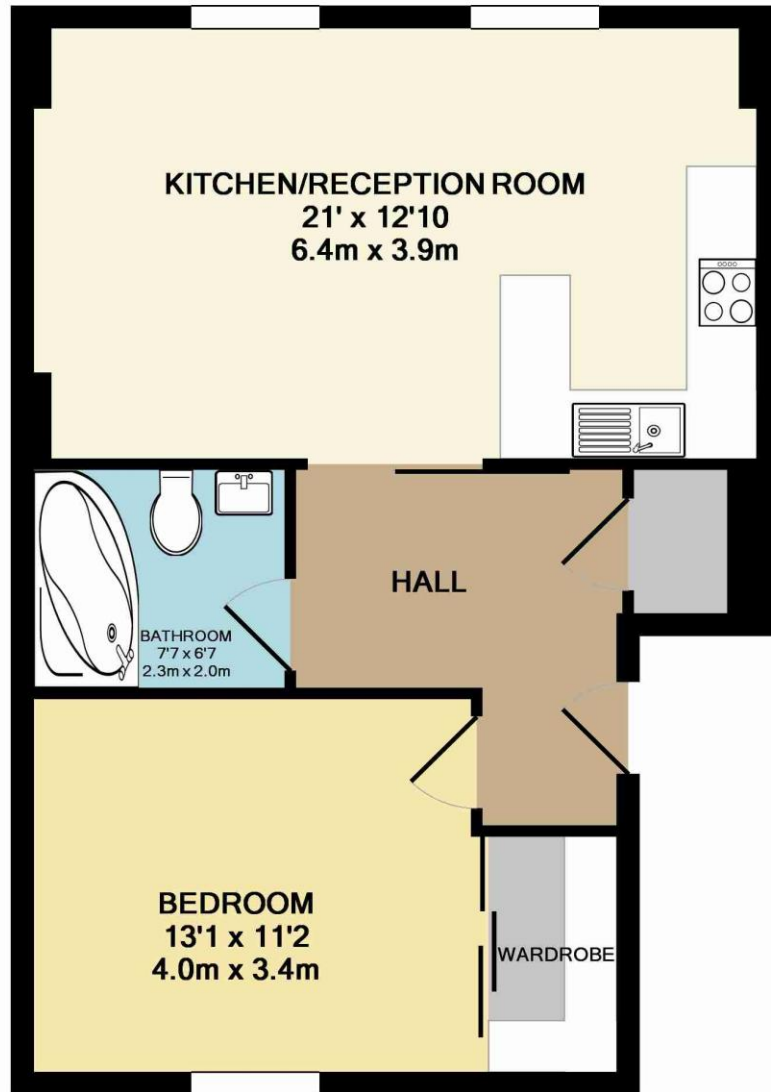
UNIVERSAL











TOTAL APPROX. FLOOR AREA 577 SQ.FT. (53.6 SQ.M.)

Whilst every attempt has been made to ensure the accuracy of the floor plan contained here, measurements of doors, windows, rooms and any other items are approximate and no responsibility is taken for any error, omission, or mis-statement. This plan is for illustrative purposes only and should be used as such by any prospective purchaser. The services, systems and appliances shown have not been tested and no guarantee as to their operability or efficiency can be given
Made with Metropix ©2012



Northways Parade Finchley Road | London NW3 5EN
Telephone: 020 7449 0449 | Fax: 020 7449 0409
Email: service@livhomes.com
www.livhomes.com

Whilst every care is taken to ensure the accuracy of these details no responsibility for errors or misdescription can be accepted nor is any guarantee offered in respect of the property. These particulars do not constitute any part of an offer or contract.