



Turnham Green Terrace, Chiswick, W4

0 Bedrooms

£1,550 per month



LONDON ESTATES



EXCELLENT LOCATION | SPACIOUS STUDIO | WOODEN FLOORING
THROUGHOUT | CENTRAL HEATING | DOUBLE GLAZING | GOOD

Available Date: 10th September 2023

EPC Rating: D | Council Tax: D - £1,550 per month

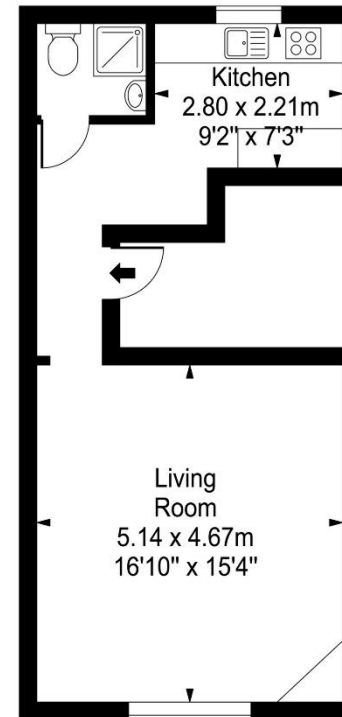


LONDON ESTATES

Turnham Green Terrace

Approx. Gross Internal Area

39 Sq M - 416 Sq Ft



First Floor

Every attempt is made to assure accuracy, however measurements are approximate and for illustrative purposes only. Not to scale.
Floor plan by www.frameworkphotos.co.uk