



Grange Park, Ealing, W5

1 Bedrooms

£1,260 per month



LONDON ESTATES



Large double bedroom | Newly fitted kitchen | Newly fitted carpet | Great location | Excellent transport links

Available Date: 3rd July 2020

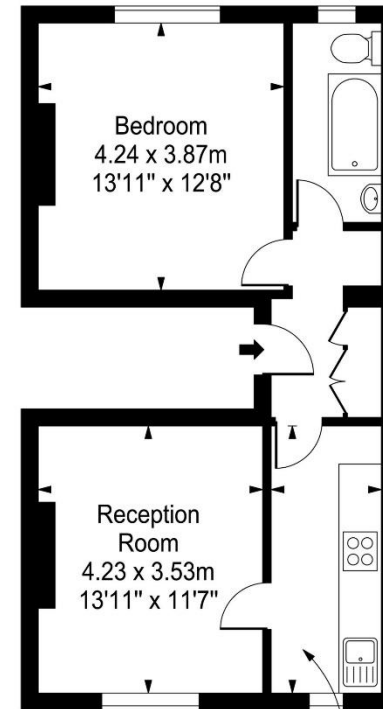
EPC Rating: C | Council Tax: D - £1,260 per month



LONDON ESTATES

Grange Park

Approx. Gross Internal Area
49 Sq M - 528 Sq Ft



First Floor
Kitchen
4.23 x 1.74m
13'11" x 5'9"

Every attempt is made to assure accuracy, however measurements are approximate and for illustrative purposes only. Not to scale.
Floor plan by www.frameworkphotos.co.uk