



Turnham Green Terrace, Chiswick, W4

1 Bedrooms

£1,400 per month



LONDON ESTATES



Video Tour Available | Wooden flooring throughout | Bright and spacious | Separate kitchen | *Water bill included*

Available Date: 20th December 2021

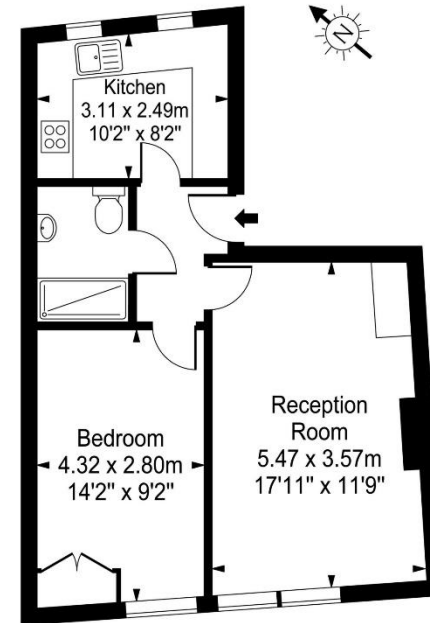
EPC Rating: C | Council Tax: C - £1,400 per month



LONDON ESTATES

Turnham Green Terrace

Approx. Gross Internal Area
47.73 Sq M - 514 Sq Ft



First Floor

Every attempt is made to assure accuracy, however measurements are approximate and for illustrative purposes only. Not to scale.
Floor plan by www.frameworkphotos.co.uk