



**Wingate Road, Hammersmith, W6**

Cressy Court | 2 Bedrooms

**£1,875 per month**



LONDON ESTATES



EXCELLENT LOCATION | TWO DOUBLE BEDROOMS | NEW KITCHEN | NEW BATHROOM | GOOD STORAGE | BIKE STORE

Available Date: 5<sup>th</sup> February 2024

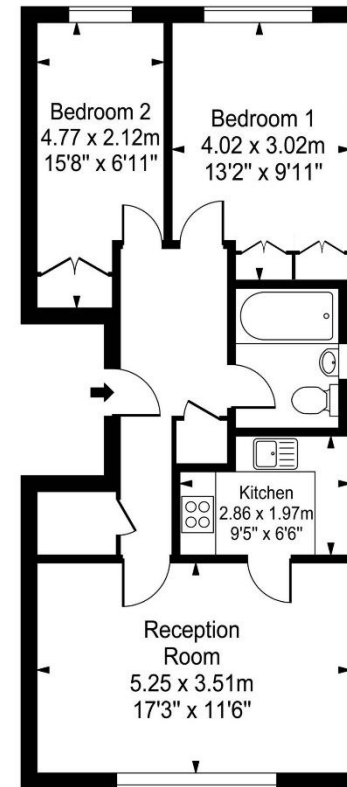
EPC Rating: E | Council Tax: D - £1,875 per month



LONDON ESTATES

## Cressy Court

Approx. Gross Internal Area  
60.50 Sq M - 651 Sq Ft



Second Floor

Every attempt is made to assure accuracy, however measurements are approximate and for illustrative purposes only. Not to scale.  
Floor plan by [www.frameworkphotos.co.uk](http://www.frameworkphotos.co.uk)