



Coningham Road, Shepherds Bush, W12

2 Bedrooms

£1,700 per month



LONDON ESTATES



Private Garden | Off street parking | Contemporary Finish | Wooden Floors | Fully fitted Kitchen | Great Location

Available Date: 18th May 2021

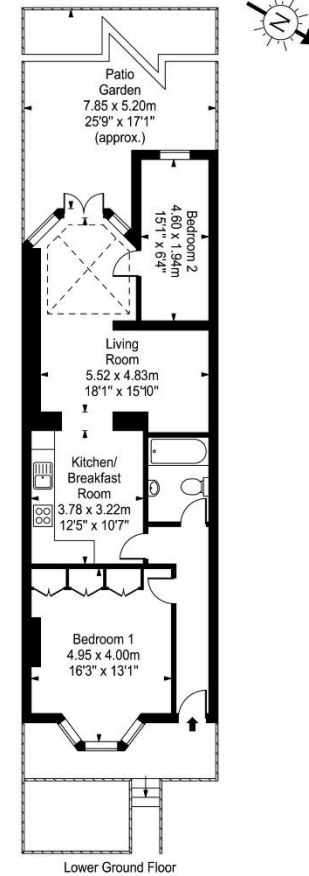
EPC Rating: C | Council Tax: E - £1,700 per month



LONDON ESTATES

Coningham Road

Approx. Gross Internal Area
74 Sq M - 796 Sq Ft



Every attempt is made to assure accuracy, however measurements are approximate and for illustrative purposes only. Not to scale.
Floor plan by www.frameworkphotos.co.uk