



Latimer Road, North Kensington, W10

1 Bedrooms

£1,650 per month



LONDON ESTATES



CT £1,331 | ONE DOUBLE BEDROOM | SEPARATE KITCHEN | PRIVATE PATIO GARDEN | GOOD TRANSPORT LINKS | CLOSE TO WESTFIELD

Available Date: 26th August 2023

EPC Rating: C | Council Tax: D - £1,650 per month

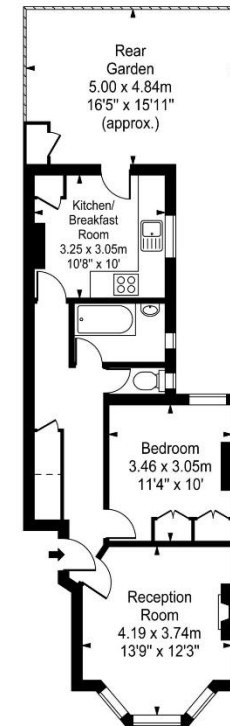


LONDON ESTATES

Latimer Road

Approx. Gross Internal Area

50.11 Sq M - 539 Sq Ft



Ground Floor

Every attempt is made to assure accuracy, however measurements are approximate and for illustrative purposes only. Not to scale. Floor plan by www.frameworkphotos.co.uk