



Turnham Green Terrace, Chiswick, W4

1 Bedrooms

£1,400 per month



LONDON ESTATES



Water bill included | Separate kitchen | Bright and Spacious | Wooden flooring | Modern fittings & fixtures | Excellent location

Available Date: 24th October 2022

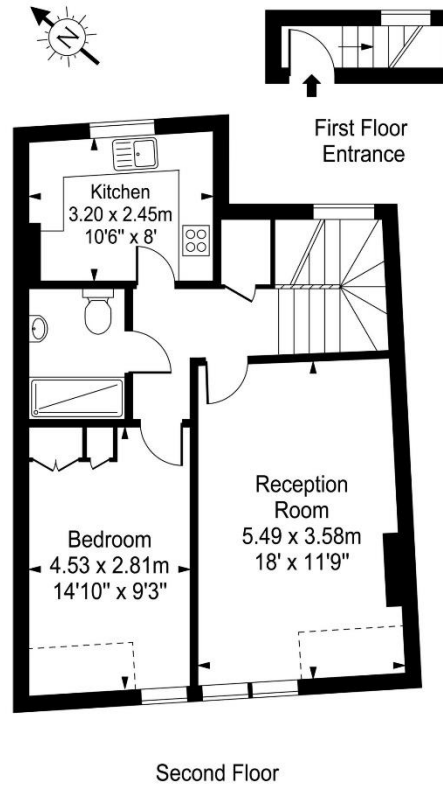
EPC Rating: E | Council Tax: C - £1,400 per month



LONDON ESTATES

Turnham Green Terrace

Approx. Gross Internal Area
57.35 Sq M - 617 Sq Ft



Every attempt is made to assure accuracy, however measurements are approximate and for illustrative purposes only. Not to scale.
Floor plan by www.frameworkphotos.co.uk