



## Oxberry Avenue, Fulham, SW6

4 Bedrooms

**£3,300 per month**



LONDON ESTATES



Four Double Bedrooms | Double Reception Room | Separate Kitchen | Private Garden | Close To Ammenities | Good Transport Links

Available Date: 17<sup>th</sup> September 2021

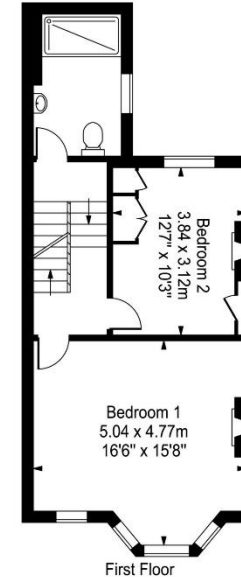
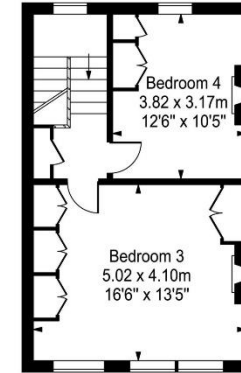
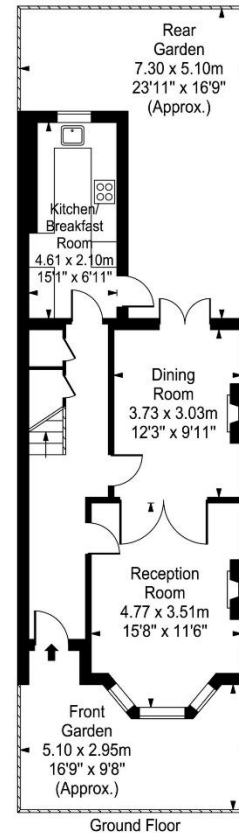
EPC Rating: D | Council Tax: G - £3,300 per month



LONDON ESTATES

### Oxberry Avenue

Approx. Gross Internal Area  
140 Sq M - 1505 Sq Ft



Every attempt is made to assure accuracy, however measurements are approximate and for illustrative purposes only. Not to scale.  
Floor plan by [www.frameworkphotos.co.uk](http://www.frameworkphotos.co.uk)