



Oxberry Avenue, Fulham, SW6

4 Bedrooms

£4,200 per month



LONDON ESTATES



COUNCIL TAX - £2,046 | FOUR DOUBLE BEDROOMS | DOUBLE RECEPTION ROOM | SEPARATE KITCHEN | PRIVATE GARDEN | CLOSE TO AMENITIES

Available Date: 23rd September 2023

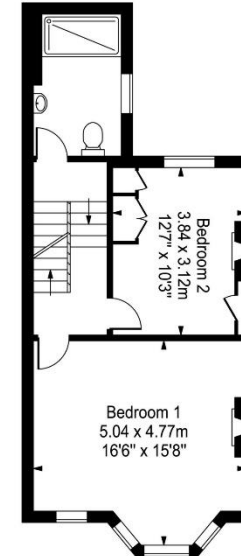
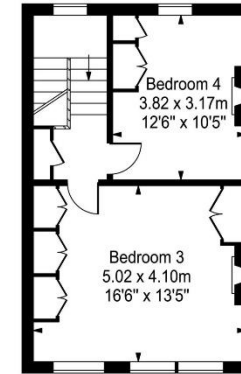
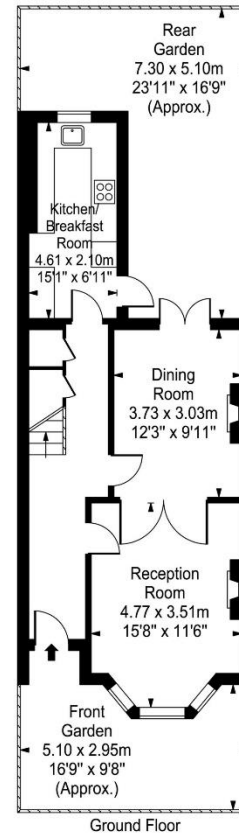
EPC Rating: D | Council Tax: G - £4,200 per month



LONDON ESTATES

Oxberry Avenue

Approx. Gross Internal Area
140 Sq M - 1505 Sq Ft



Every attempt is made to assure accuracy, however measurements are approximate and for illustrative purposes only. Not to scale.
Floor plan by www.frameworkphotos.co.uk