



Hammersmith Bridge Road, Hammersmith, W6

2 Bedrooms

£1,750 per month



LONDON ESTATES



Professionally Managed | Great location | Fully refurbished | Dishwasher | Washer Dryer | Wooden Flooring

Available Date: 13th July 2021

EPC Rating: E | Council Tax: D - £1,750 per month

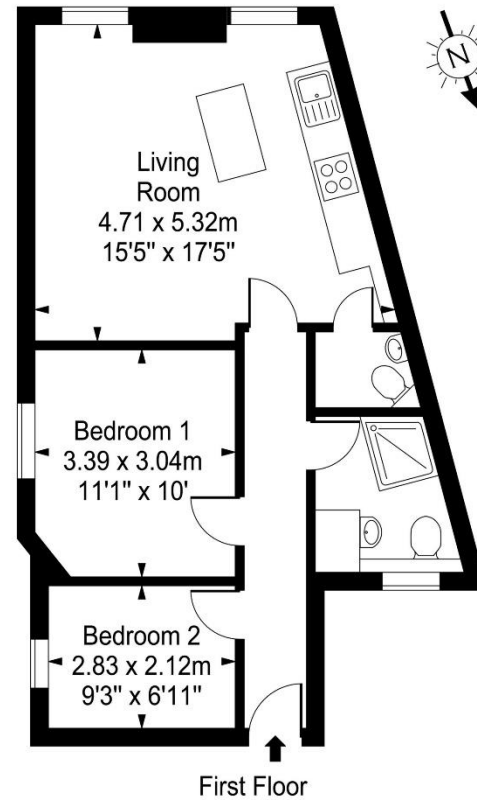


LONDON ESTATES

Hammersmith Bridge Road

Approx. Gross Internal Area

56 Sq M - 602 Sq Ft



Every attempt is made to assure accuracy, however measurements are approximate and for illustrative purposes only. Not to scale.
Floor plan by www.frameworkphotos.co.uk