



Westbourne Terrace, Paddington, W2

1 Bedrooms

£1,995 per month



LONDON ESTATES



LOWER GROUND FLOOR | NEWLY REFURBISHED | UNDERFLOOR HEATING | COURTYARD GARDEN | PRIVATE ENTRANCE | AMAZING

Available Date: 14th February 2024

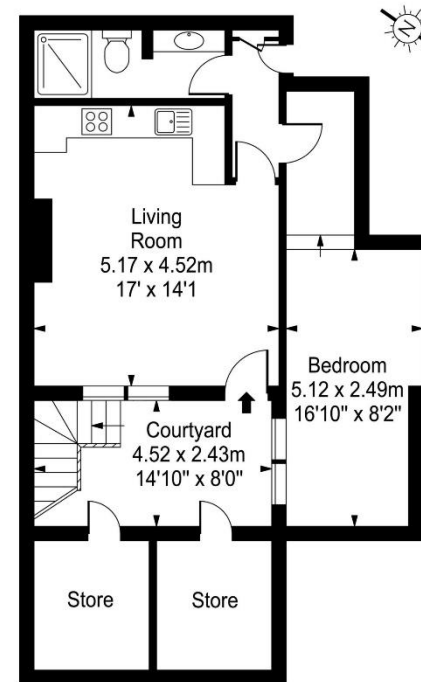
EPC Rating: D | Council Tax: D - £1,995 per month



LONDON ESTATES

Westbourne Terrace

Approx. Gross Internal Area
46.68 Sq M - 502 Sq Ft
(Excluding Store)



Lower Ground Floor

Every attempt is made to assure accuracy, however measurements are approximate and for illustrative purposes only. Not to scale.
Floor plan by www.frameworkphotos.co.uk