



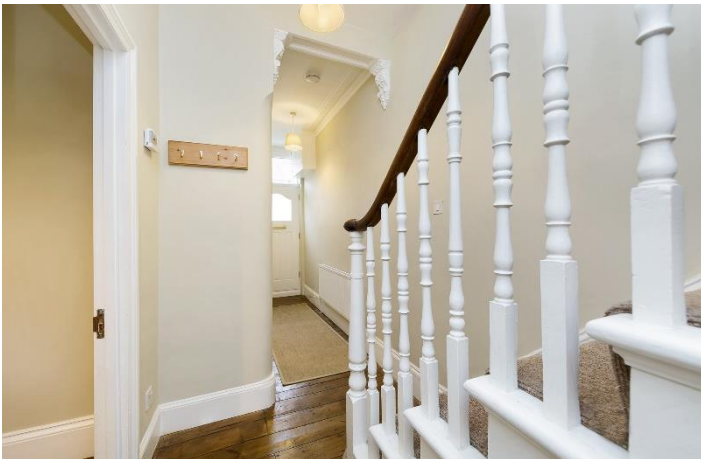
Carthew Road, Hammersmith, W6

3 Bedrooms

£2,625 per month



LONDON ESTATES



THREE DOUBLE BEDROOMS | TWO BATHROOMS | TWO RECEPTION ROOMS | EXCELLENT TRANSPORT LINKS | PRIVATE GARDEN | EXCELLENT

Available Date: 2nd December 2022

EPC Rating: C | Council Tax: G - £2,625 per month

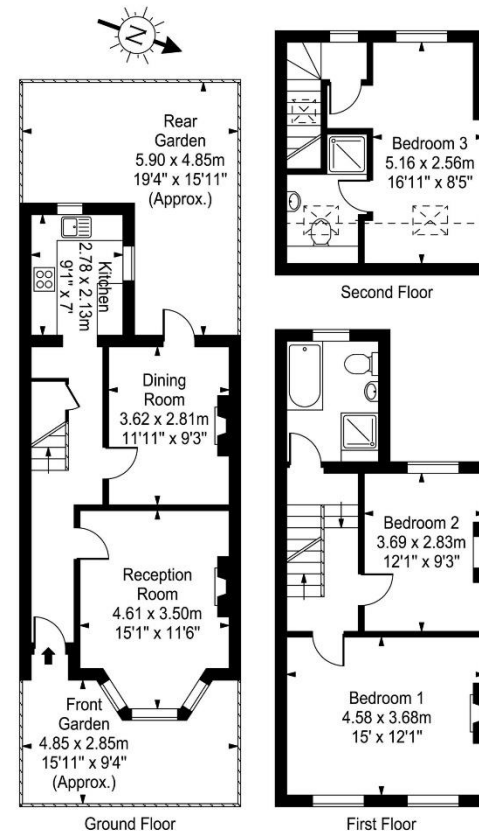


LONDON ESTATES

Carthew Road

Approx. Gross Internal Area
107 Sq M - 1150 Sq Ft

Key:
- - - - - Reduced headroom below 1.5m / 5'0"



Every attempt is made to assure accuracy, however measurements are approximate and for illustrative purposes only. Not to scale.
Floor plan by www.frameworkphotos.co.uk